



**South Africa 2018**

*Eastern Cape*





## Game Hunters Africa - Eastern Cape Province - Stormberg Conservancy

### Hunting area Stormberg

The Stormberg Conservancy is a mixture of picturesque mountains and open valleys, situated in the high country of the Eastern Cape Province of South Africa. Part of this 100.000-acre conservancy's rich ecosystem includes 20 species of plains game, numerous game birds and waterfowl. This high altitude montane grassland area is famous for its Greywing Partridge hunting, and boasts the most stable populations of Vaal Rhebok in Africa.

The quarries in this area live from the open plains up to the rugged mountainsides, where the altitude extends up to 7500 feet above sea level. Hunting in this region can be strenuous due to the walking and stalking that is required. Hunters here will be exposed to long range shooting, so a good flat shooting rifle with variable scope is advisable. Cool temperatures can be experienced in this area; therefore, it is advisable to bring warm clothes. The days can be temperate, with cold mornings and evenings.

Animals that can be hunted in and around Stormberg conservancy are: Steenbok, Grey Duiker, Cape Gysbok, Oribi, Mountain Reedbuck, Vaal Rhebok, Cape, Black and White Springbok, White and Common Blesbok, Red Lechwe, Red Hartebeest, Fallow Deer, Black Wildebeest, Burchell's Zebra, Cape Eland.

### Accommodation Stormberg Buffelsfontein

Buffelsfontein is a colonial style lodge, which is set at the top of the Stormberg Mountains. After a solid day's hunting in the mountains, Buffelsfontein lodge can be a welcome sight for the weary and cold hunter. Fond memories of the day's hunting can be re-lived around the large stone fireplace in the entertainment room. Dinner is served in a separate dining room with a blazing log fire, adding to the warm atmosphere. Electricity is available at Buffelsfontein Lodge.





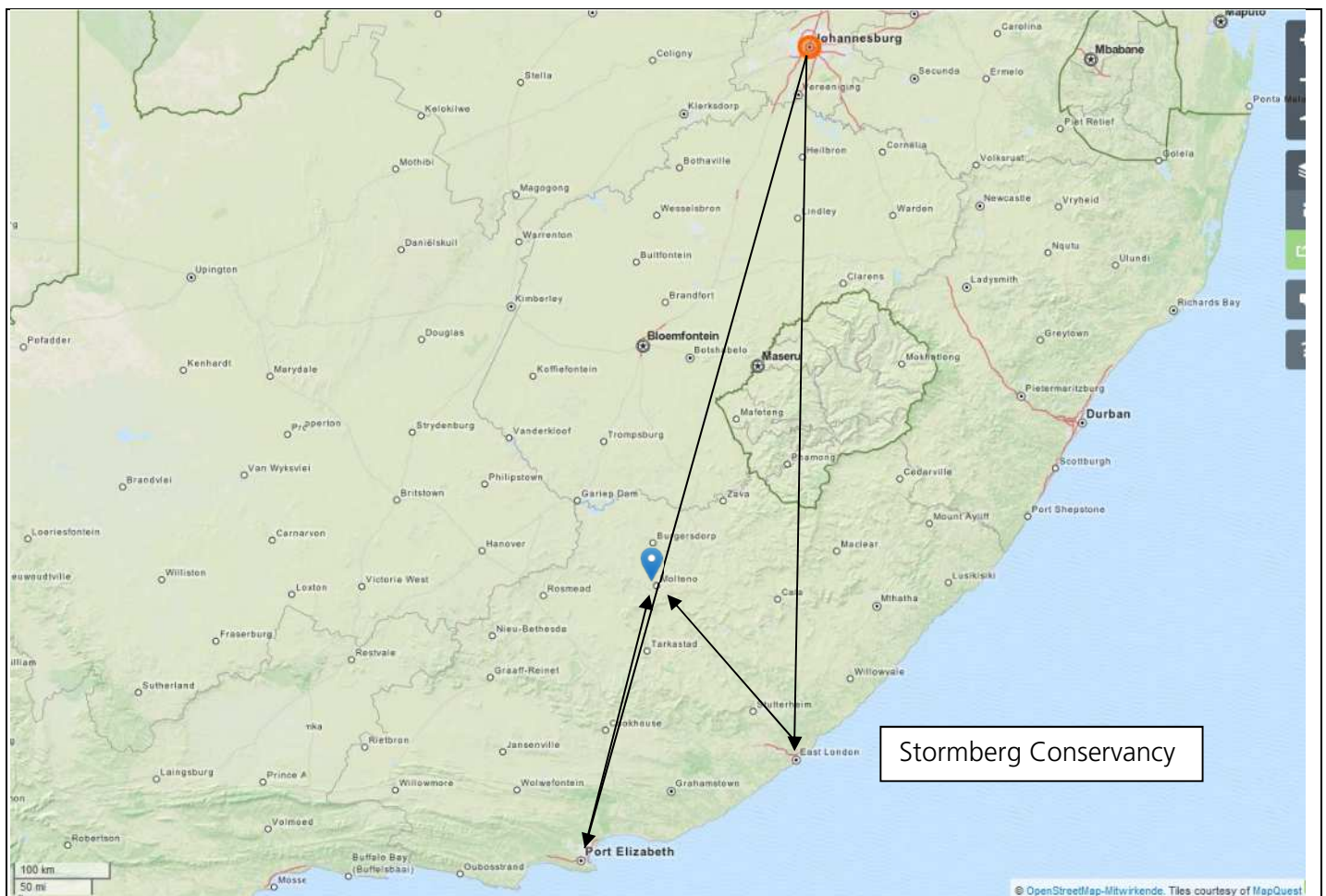


### Possible Itinerary

**Eastern Cape Province - Stormberg Conservancy**  
 Distances by road are as follows:

- East London in approx. 4 hours
- Port Elizabeth in approx. 6 hours

DAY 01 Departure from Europe  
 DAY 02 Flight to Port Elizabeth or East London via Johannesburg, Transfer to Camp  
 DAY 03 -09 for example 7 hunting days  
 DAY 10 Transfer to Airport, Return flight  
 DAY 11 Arrive in Europe





## Game Hunters Africa - Eastern Cape Province – Fort Governors

**Hunting area** Fort Governors is around 12000 ha in extent; it consists of mostly Eastern Cape coastal vegetation.

The area is around 10 minutes drive from Grahamstown which is a very historic town. This means that if you want to sightsee, and shop it is very easy and close to the lodge.

**Accommodation** Uniondale was an old farmhouse that has been converted into a beautiful lodge – about 5 minutes from the main gate.

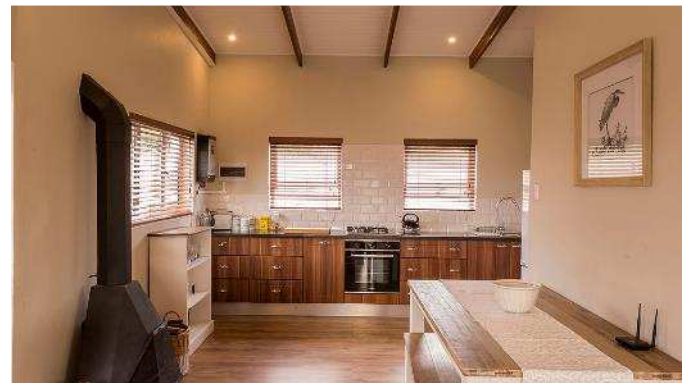
It has 2 double rooms inside the house and 2 cottages outside all with en suite bathrooms.





**Accommodation** Stoneyvale is the biggest lodge about 30 minutes from the main gate.  
**Stoneyvale** The lodge has a separate building that has the kitchen, lounge and dining room, plus swimming pool.

There are 5 cottages all separated from the main lodge, the cottages have there double en suite rooms, a beautiful lounge, kitchen and patio.





**Accommodation Wigwam** Wigwam is a small lodge overlooking a beautiful valley, the lodge has 2 double rooms with en-suites, kitchen, lounge and dinning room.

It is an ideal lodge for a single couple and 1 PH as is only has 2 rooms.



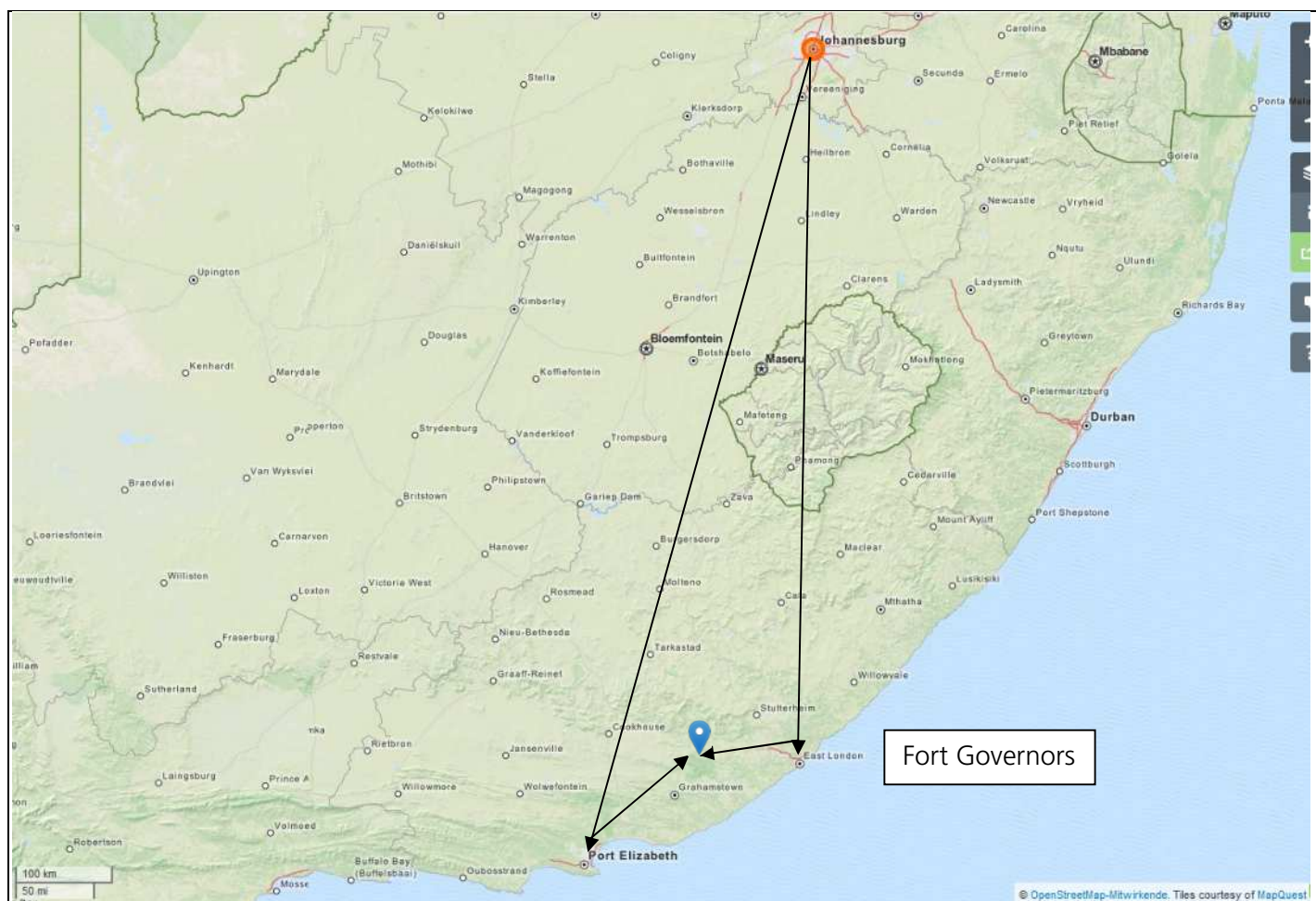
## Possible Itinerary

### Eastern Cape Province – Fort Governors

Distances by road are as follows:

- East London in approx. 2,5 hours
- Port Elizabeth in approx. 2,5 hours

DAY 01 Departure from Europe  
 DAY 02 Flight to Port Elizabeth or East London via Johannesburg, Transfer to Camp  
 DAY 03 -09 for example 7 hunting days  
 DAY 10 Transfer to Airport, Return flight  
 DAY 11 Arrive in Europe



## Prices 2018 For both Areas

### Costs per day (Daily Rates)

|   |        |       |
|---|--------|-------|
| Daily Rate – Plains game, Hunt guided 1:1, per Hunter | EUR    | 380 – |
| Daily Rate – Plains game, Hunt guided 2:1, per Hunter | EUR    | 295 – |
| Daily Rate - Observer                                 | EUR    | 170 – |
| Trophy Handling Fee / Safari                          | EUR    | 170 – |
| Rifle Hire / caliber / Safari – excluding Ammo        | EUR    | 170 – |
| Shotgun hire / day – excluding Ammo                   | EUR    | 40 –  |
| Ammunition  | @ Cost |       |
| Baiting Fee (Bushpig and Blue Duiker)                 | EUR    | 130 – |
| Predator Calling / Night                              | EUR    | 130 – |
| Dog Pack  | EUR    | 130 – |

Days are charged as per night spent in the accommodation.

## Package:

|  |     |          |
|--|-----|----------|
| Buffalo package – 7 day Buffalo package<br>That includes the daily rate and Trophy fee 1 Buffalo | EUR | 10,700 – |
|--|-----|----------|

| Game                   | Price        |
|------------------------|--------------|
| Baboon                 | EUR 65 –     |
| Buffalo < 40 "         | EUR 8,100 –  |
| Buffalo > 41 "         | EUR 10,700 – |
| Blesbok Common         | EUR 380 –    |
| Blesbok Common-Cull    | EUR 130 –    |
| Blesbok White          | EUR 640 –    |
| Bontebok               | EUR 1,700 –  |
| Bushbok                | EUR 765 –    |
| Bushpig                | EUR 765 –    |
| Caracal                | EUR 880 –    |
| Fallow Deer            | EUR 510 –    |
| Fallow Deer-Cull       | EUR 130 –    |
| Duiker Blue            | EUR 1,700 –  |
| Duiker Grey            | EUR 215 –    |
| Duiker Grey-Cull       | EUR 40 –     |
| Eland Cape             | EUR 2,350 –  |
| Eland Cape-Cow         | EUR 430 –    |
| Oryx                   | EUR 1,400 –  |
| Giraffe                | EUR 3,600 –  |
| Grysbok                | EUR 1,100 –  |
| Hartebeest Red         | EUR 950 –    |
| Hartebeest Red-Cow     | EUR 390 –    |
| Impala                 | EUR 385 –    |
| Impala-Cull            | EUR 130 –    |
| Jackal Black Backed    | EUR 130 –    |
| Klipspringer           | EUR 1,300 –  |
| Kudu Cape              | EUR 1,400 –  |
| Kudu Cape-Cull         | EUR 430 –    |
| Lechwe Red             | EUR 2,500 –  |
| Nyala                  | EUR 2,340 –  |
| Oribi                  | EUR 2,120 –  |
| Ostrich                | EUR 470 –    |
| Reedbuck Common        | EUR 1,280 –  |
| Reedbuck Mountain      | EUR 390 –    |
| Reedbuck Mountain-Cull | EUR 130 –    |
| Rhebok Vaal            | EUR 1,550 –  |
| Roan                   | EUR 6,800 –  |
| Sable                  | EUR 6,800 –  |
| Sheep Barbarey         | EUR 2,120 –  |
| Springbok Cape         | EUR 350 –    |
| Springbok Cape-Cull    | EUR 85 –     |
| Springbok Kalahari     | EUR 340 –    |
| Springbok Black        | EUR 510 –    |
| Springbok White        | EUR 1,100 –  |
| Springbok Copper       | EUR 1,700 –  |
| Steenbok               | EUR 430 –    |
| Warthog                | EUR 430 –    |
| Warthog-Cull           | EUR 130 –    |
| Waterbuck Common       | EUR 2,250 –  |
| Wildebeest Black       | EUR 940 –    |
| Wildebeest Black-Cow   | EUR 215 –    |
| Wildebeest Blue        | EUR 940 –    |
| Zebra Burchells        | EUR 1,400 –  |
| Zebra Mountain         | EUR 4,250 –  |





|                                      |  |
|--------------------------------------|--|
| <b>Costs included for both areas</b> | Meet & Greet at the Airport  |
|                                      | Service of a Professional Hunter   |
|                                      | Safari-Staff (Trackers, Skinner, .....)  |
|                                      | Accommodation and board (food, soft drinks, beer and wine) in camp                               |
|                                      | All motor vehicle travel during the hunt, including collection and return to the nearest airport |
|                                      | Field preparation of trophies  |
|                                      | Government license fees (except Big Five)  |

|   |   |            |
|---|---|------------|
| <b>Costs not included in both areas</b> | Flights (we are happy to arrange your flights to South Africa)                        | On request |
|   | All air charter costs   | On request |
|   | Travel insurance  | On request |
|   | When carrying your own weapon - send the necessary documents with DHL to South Africa | EUR 100 –  |
|   | Hotel before / after the hunt if needed   | On request |
|   | Local shopping trip to town   | On request |
|   | Spirituous liquor   | On request |
|   | Currently 14%VAT (no VAT on Trophy fees)  |            |
|   | Trophy fee  | See list   |
|   | Wounded animals are considered to be shot and will be charged for                     | See list   |
|   | Packing, disinfecting and forwarding of trophies                                      | On request |
|   | Suggested tips at Buffalo hunts for the professional hunter / day                     | EUR 90 –   |
|   | the trackers, skimmers and cook, etc. total   | EUR 360 –  |
|   | Suggested tips at Plains Game hunts for the professional hunter / day                 | EUR 20 –   |
|   | the trackers, skimmers and camp personal, etc. in a total per day                     | EUR 30 –   |
|   | Organization fee hunter   | EUR 200 –  |
|   | Organization fee observer   | EUR 100 –  |



**Recommended Equipment:**

South Africa can be warm to hot during the months of April, May, September and October (65f - 85f).

The months of June, July and August are winter and can start with night temperature's dropping to below zero, warming up to around the mid 60f or 70f by midday.

- 2 Pairs good walking boots or running shoes (run in)
- 4 Pairs good socks
- 3 Pairs long hunting pants (Dark Khaki or Olive Green)
- 3 Pairs short hunting pants (Early hunts - April, May in SA)
- 3 Pairs hunting shirts (Dark Khaki or Olive Green)
- 1 Realtree coverall with zip
- 1 Hunting Jacket - Realtree type camo (Dark Khaki or Olive Green)
- 1 Warm sweater or jumper
- Gloves
- Sun Screen/Cap or Hat/Casual wear for evenings
- Personal Camera Equipment/Binoculars/Insect repellent

**Please Note:**

Military type camo is not permitted in most African countries, but Realtree types are normally accepted. Laundry is done each day except for the days when you change camp and the day of departure.

**Entry requirements**

Please note the entry requirements for the respective country. Information can be obtained at the responsible consulate. In case a visa is needed, please be advised, that the acquisition is your own responsibility.

**Vaccination requirements:**

Please note the vaccination requirements for the respective country. Information can be obtained at the responsible tropical institute. In case a vaccination is needed, please be advised, that the adherence is your own responsibility.

The General Terms and Conditions of Blaser Safaris GmbH apply. Blaser Safaris GmbH acts as an intermediary and is not the organizer of hunting tours. Subject to errors and alterations of prices and programs. Version 12/2017.





NOTES:

[illegible]



NOTES:

[illegible]



## Blaser Safaris GmbH

[www.blaser-safaris.com](http://www.blaser-safaris.com)  
[info@blaser-safaris.com](mailto:info@blaser-safaris.com)

**Büro Österreich | Austria:**  
Europastraße 1/1 · A-7540 Güssing  
AT +43 (0) 33 22 – 4 29 63 -20

**Büro Deutschland | Germany:**  
Ziegelstadel 1 · D-88316 Isny  
DE +49 (0) 7562 – 9 14 54 -14

