

Zimbabwe 2018

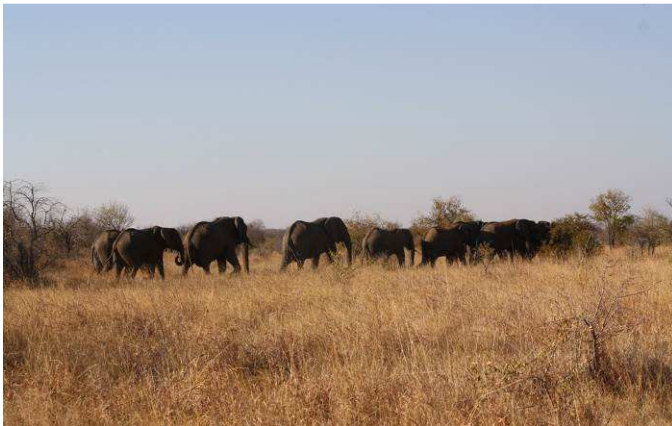
Matetsi area

Hunting in Zimbabwe

In Zimbabwe we conduct our hunting with our **Partner, Classic African Hunting**, in the remote Matetsi area in the west of the country. This includes Kazuma / Pandamasuie Forest area which borders Kazuma Pan and Zambezi National Park.

We also hunt the nearby Fuller Forest. Further south of this we hunt Ngamo Forest area that shares the northeastern boundary with the famous Hwange National Park. All areas are wild, unfenced and vary in size from 30,000 hectares to just over 102,000 hectares. These areas are all very well known for delivering consistently good quality trophies of both big and plains game animals.

There is no defined hunting season in Zimbabwe however, due to the summer rains; most hunting is conducted between the months of April and October, with June, July and August being the most popular months for hunting.



Possible Itinerary

To reach the Matetsi/Kazuma camp you fly through Johannesburg onto Victoria Falls with either South African Airways or British Airways. In Victoria Falls you will be picked up at the airport and transported to the camp. The drive to camp is approximately 1 hour (depending on which camp is utilized).

DAY 01	Departure from Europe
DAY 02	Arrive in Victoria Falls, Transfer to Camp
DAY 03 -12	for example 10 hunting days
DAY 13	Transfer to Airport, Return flight
DAY 14	Arrive in Europe

Day of Hunting in Zimbabwe

5:00 am (or first light - Breakfast). The wake time depends how far from the camp one will be hunting that day, if some species of animals are a long way from camp one would arise much earlier in order to get to the hunting area early.

5:30 am - Transport to the hunting area in Land Cruisers especially equipped for safari hunting purposes. Once you arrive at the hunting area you will travel on foot.

7:00 –Noon – The hunting begins. Early morning is the best time for hunting so you will stop for lunch depending on how your hunt is going that morning

Noon - Usually by lunchtime it is pretty hot making hunting during these hours not very fruitful.

You head back to the camp for lunch and maybe a little siesta. If any animals are shot during the course of the day they are normally transported back to the camp where qualified skinners are available to skin the animals and prepare the trophies according to the hunters requirements

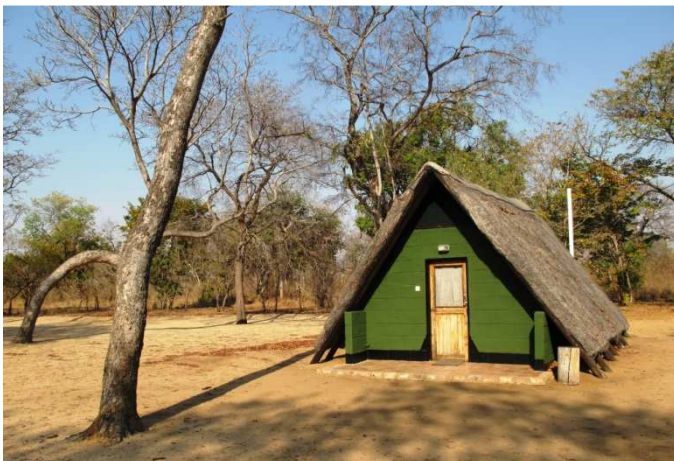
After lunch - After a siesta, we will head out to hunt once it becomes a little cooler and game starts to move about.

End of Day - After hunting all afternoon around dusk time, we return to camp. You will then have time to shower / bath.

7:00pm - You relax around the campfire with your professional hunter with a sundowner. Dinner follows as a three-course meal, thereafter plans are made for the next day's hunt and then to bed.

10:00pm - Everyone heads to bed to rest for the next great day of hunting.

Accommodation Kazuma Camp - Is constructed of 4 "A" frame thatched chalets under a grove of False Mopane Trees. All chalets have running water and flush toilets, there is a communal dining area and fire pit. Lighting is all solar powered.



Prices 2018

Hunt guidance 1:1 on	Hunting days	Price per day
Tuskless Elephant & Plains Game	10	USD 1,000 –
Hippo, Crocodile & Plains Game	10	USD 1,000 –
Sable & Plains Game	10	USD 1,050 –
Buffalo & Plains Game	10	USD 1,400 –
Buffalo, Sable & Plains Game	14	USD 1,500 –
Leopard & Plains Game	15	USD 1,400 –
Buffalo, Leopard & Plains Game	15	USD 1,500 –
Elephant & Plains Game (No Sable)	15	USD 2,600 –
Buffalo, Sable, Leopard & Plains Game	18	USD 1,650 –
Elephant & Buffalo	18	USD 2,600 –

- ALL PRICES SUBJECT TO CHANGE
- Lion hunts are available on request hunt guidance 1:1 and are quoted separately.



Game	Price
Baboon	USD 110 –
Buffalo male	USD 4,400 –
Buffalo cow	USD 1,870 –
Bushbuck	USD 935 –
Civet	USD 330 –
Crocodile	USD 3,850 –
Dove	USD 6 –
Duiker Grey	USD 275 –
Eland male	USD 2,200 –
Eland cow	USD 990 –
Elephant Trophy	USD 18,700 –
Elephant Tuskless	USD 5,500 –
Giraffe	USD 2,145 –
Genet	USD 330 –
Grysbok	USD 330 –
Guinea Fowl	USD 6 –
Hippo	USD 4,235 –
Hyena	USD 440 –
Impala male	USD 275 –
Impala female	USD 220 –
Jackal	USD 275 –
Klipspringer	USD 605 –
Kudu male	USD 1,320 –
Kudu female	USD 825 –
Leopard	USD 4,950 –
Monkey	USD 110 –
Porcupine	USD 220 –
Reedbuck	USD 720 –
Sable	USD 4,950 –
Sandgrouse	USD 6 –
Serval	USD 440 –
Steenbok	USD 330 –
Waterbuck male	USD 1,925 –
Warthog male	USD 385 –
Warthog female	USD 275 –
Wildcat	USD 330 –
Zebra	USD 1,320 –

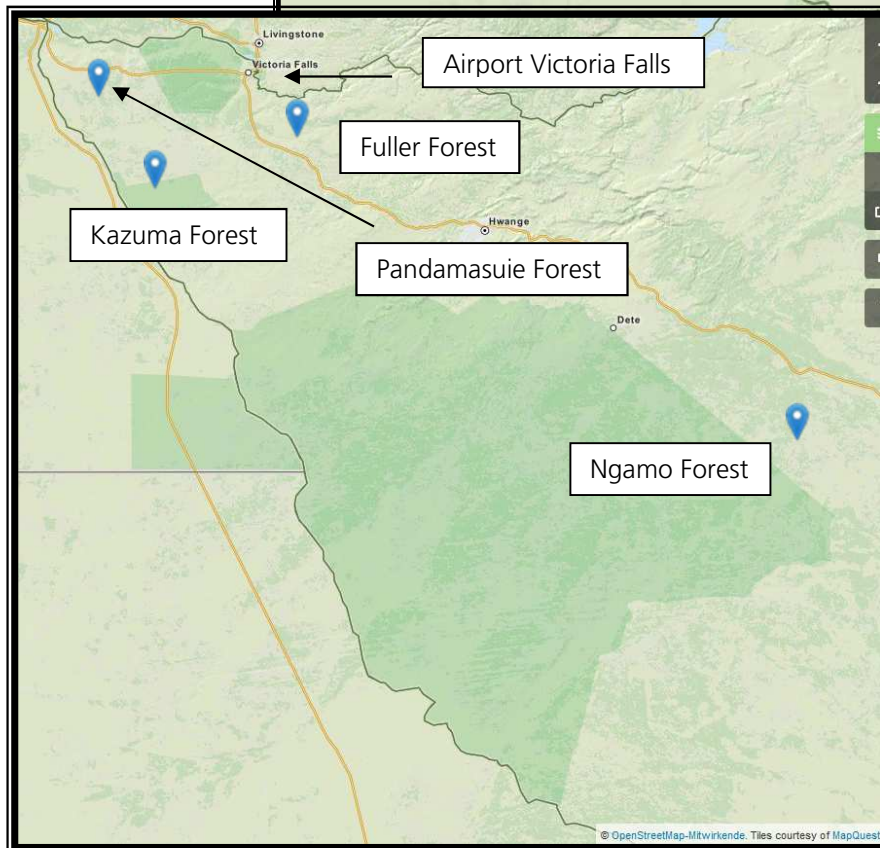
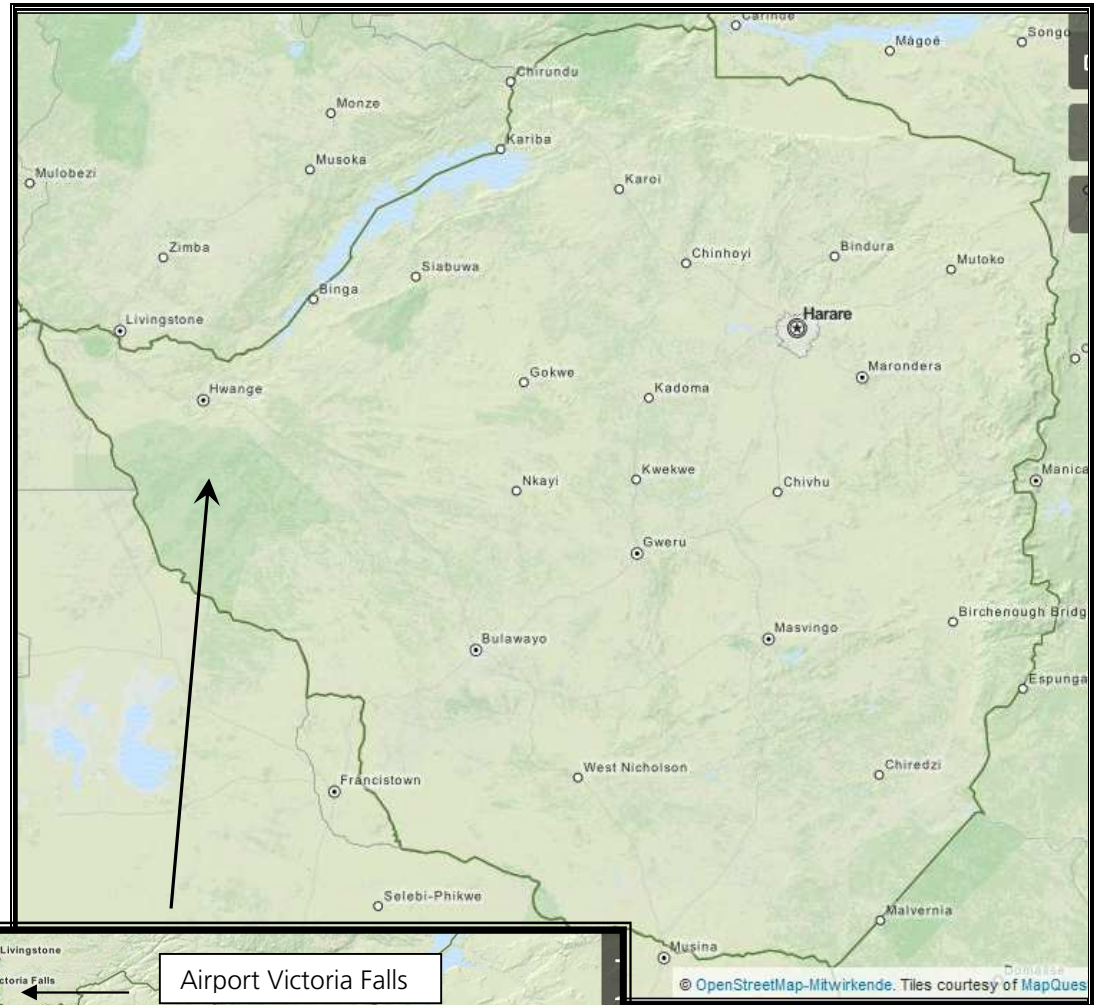
- Wounded animals are considered shot and thus will be charged for
- Not all species are available in the same concession and a transfer may be required

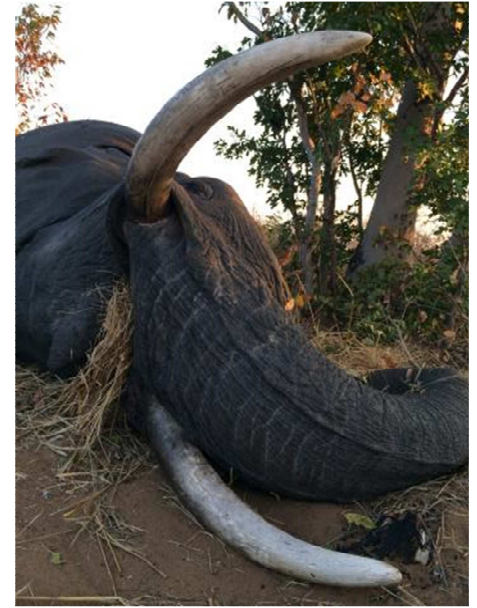


Costs included	Meet & Greet at the Airport
	Transfer from the Airport to Camp
	Service of a licensed professional hunter
	Hunt guidance 1:1
	Safari-Staff (Trackers, Skinner, etc.)
	Accommodation and board, food and soft drinks in camp:
	Daily laundry services

Costs not included	Flights (we are happy to arrange your flights to Zimbabwe)	On request
	Travel insurance	On request
	When carrying your own weapon - send the necessary documents with DHL to South Africa	EUR 100 –
	When hunting elephant, lion and leopard, one must be accompanied by a national park scout. if the booked game (elephant, lion or leopard) is shot on the 5 th day, only 5 days are charged for the scout.	USD 100 –/day
	Hotel before / after the hunt if needed	On request
	Observer fee per day	USD 250 –
	Trophy fees	See pricel list
	CITES tags	USD 100 –
	Rifle rental, if desired per day	USD 30 –
	Ammunition per box used	On request
	Transport of trophies to taxidermist or shipper	On request
	Preparation of trophy by a taxidermist	On request
	Shipping of trophy to international destination	On request
	2 % Government Levy on daily rate	
	4 % Government Levy on trophy fees	
	VAT	USD 16.50/day
	All alcoholic beverages & spirits	On request
	Personal expenses	
	Suggested tip:	
	for the professional hunter per day	USD 100 –
	the camp manager a total	USD 200 –
	the trackers, skimmers, cooks, waiters etc. a total	USD 400 –
	Organization fee hunter	USD 300 –
	Organization fee observer	USD 150 –







Recommended Equipment:

The following list would generally be sufficient for a 10 day safari:

- 3-4 long sleeved shirts.
- 2 Pairs of trousers. Note: trousers with zip off legs work very well.
- 2 Pairs of shots
- 3 T-Shirts or Shirts
- 3-4 Pairs of good quality cotton socks.
- 1 Jacket
- 1 thick fleece for the early mornings and evening.
- 1 Pair of comfortable soft soled walking shoes.
- Lightweight gloves
- Wide brimmed hat or baseball cap.

Basically, beige or green colored, tear-resistant clothing, preferably cotton, are recommended.

Most hunters are TRAVELLING WITH HUNTING CLOTHES THAT ARE TOO LIGHT! Choose darker green or brown tones! In the camps, there is a laundry service, so not too much clothing needs to be taken.

Attention: Camouflage is forbidden in Zimbabwe!

- Pens and an A4 folder for travel formalities
- Locks for your luggage
- Two seperate wallets
- Mobil phone and charger
- Mini sewing kit
- Lighter / matches waterproof
- Toiletries such as toothbrush, toothpaste, comb/ hair brushes, nail brush
- Moistening Cream, Lip balm
- Razor & blades, shaving gel
- Small vanity mirror
- Small wash cloth – towels are supplied though in our camp
- Toilet paper and/or kleenex, wet wipes/hand sanitizer or no-water/antibacterial soap – very handy in the safari vehicle

- Suncream
- Personal medication
- First aid kit (Plasters, antiseptic ointment, painkillers, charcoal tablets etc.) *
- Backpack
- Water bottle
- Flashlight, spare batteries
- Hunting knife
- Binoculars
- Sunglasses
- Spare glasses
- Small Photographic equipment (camera, film, batteries – dust-proof plastic bag)
- Adapter
- GPS or Compass, if you want to use
- Weapon, variable riflescope (ideally 1,5-6fach), ammunition, cleaning utensils, rifle case
(Do not scrimp on ammunition, on site purchase of ammunition is not possible!)

Passport, driving license, EFP (European firearms pass). Credit card, traveler's checks, airline ticket.

If you are planning a hotel stay before or after the hunt, a jacket and tie must belong to your luggage!

***Your kit should include:**

- Sunscreen
- Eye, Ear and Nose drops
- Thermometer (digital)
- Scissors and forceps
- Field dressings and plasters
- Disinfectants
- Wound and healing balm
- Insect repellent
- The usual long-term medication

And the following medicines:

- Against fever, diarrhea and vomiting
- Stomach discomfort
- Sickness
- Sunburn
- Insect bites
- Circulatory problems
- Insomnia
- **For pain relief (always carry these with you! If you leave it in the camp its no use to you in an accident in the field!)**
- Against constipation
- Against sore throat

Entry requirements

Please note the entry requirements for the respective country. Information can be obtained at the responsible consulate. In case a visa is needed, please be advised, that the acquisition is your own responsibility.

Vaccination requirements:

Please note the vaccination requirements for the respective country. Information can be obtained at the responsible tropical institute. In case a vaccination is needed, please be advised, that the adherence is your own responsibility.

The General Terms and Conditions of Blaser Safaris GmbH apply. Blaser Safaris GmbH acts as an intermediary and is not the organizer of hunting tours. Subject to errors and alterations of prices and programs. Version 12/2017.



NOTES:

[illegible]



NOTES:

[illegible]



NOTES:

[illegible]

Blaser Safaris GmbH

www.blaser-safaris.com
info@blaser-safaris.com

Büro Österreich | Austria:
Europastraße 1/1 · A-7540 Güssing
AT +43 (0) 33 22 – 4 29 63 -20

Büro Deutschland | Germany:
Ziegelstadel 1 · D-88316 Isny
DE +49 (0) 7562 – 9 14 54 - 14

