



**Namibia 2019**

*Sney Rivier Lodge*





## Hunting in Namibia

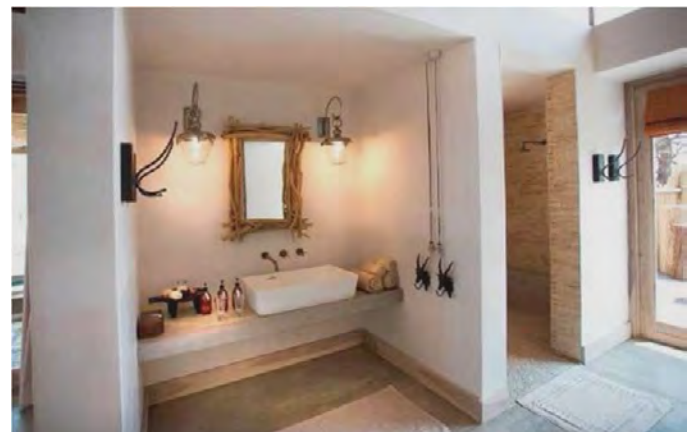
Go hunting for more than 20 different types of game in Namibia's stunning scenery with our exclusive Partner Blaser Safaris and. Make use of the various leisure- and sightseeing activities on location.



**Accommodation:** Sney Rivier Lodge, built in 2009, offers beautiful luxury and convenience in unparalleled ambience. Five chalets located near the main building accommodate a maximum of ten guests, a quiet and relaxed atmosphere is guaranteed.

The hunting area starts directly from the lodge, extending over 43,000 hectares. The focus is on stalking Oryx, Mountain Zebra, Springbok, Black Wildebeest, Blue Wildebeest, Impala and Warthog.

Transfer from Windhoek airport to the lodge is about two hours. The Sney Rivier Lodge is an ideal destination that meets the highest standards, both for hunters and their family and guests. The Lodge is harmoniously integrated into the landscape, the lodge also supplies all the amenities that contribute to a relaxing dream vacation.





On the professionally equipped shooting range, you can shoot at targets with distances of up to 400m. Modern hunting weapons are available to hire at the Lodge as requested. In addition, guests can use our hunting course with their own guns (F3).



As a highlight we offer our guests a memorable "sundowner" on Mount Sney Rivier and a visit to the "hot springs".



#### Prices 2019

#### Cost of Hunt and Accommodation:

• Guided hunt 1:1 incl. accommodation, per day	EUR	450 –
• Guided hunt 2:1 incl. accommodation, per day	EUR	390 –
• Observer, accommodation per day	EUR	280 –
• Arrival and departure day hunter per day	EUR	225 –
• Arrival and departure day observer per day	EUR	140 –
• Transfer per person per trip	EUR	100 –
• Rifle rental per day	EUR	25 –
• Children up to 8 years old (in parents room)	Free of Charge	
• Children up to 14 years old	EUR	90 –
• Children up to 16 years old	EUR	120 –





Game	Price	Game	Price
Hartmann's /Mtn. Zebra	EUR 1,100 –	Baboon	EUR 100 –
Duiker	EUR 350 –	Steenbuck	EUR 350 –
Damara Dik Dik (on request)	EUR 2,100 –	Giraffe	EUR 2,600 –
Eland	EUR 1,950 –	Jakal	EUR 50 –
Cheetah (on request) (permit needed)	EUR 3,000 –	Springbuck	EUR 600 –
Impala	EUR 750 –	Burchell's / Plains Zebra	EUR 600 –
Caracal (on request) (permit needed)	EUR 500 –	Warthog	EUR 500 –
Klipspringer (on request)	EUR 1,350 –	Waterbuck	EUR 1,800 –
Kudu	EUR 1,650 –	Blue Wildebeest	EUR 850 –
Oryx	EUR 500 –	Black Wildebeest	EUR 1,400 –
Brown Hyena (on request) (permit needed)	EUR 3,500 –	Leopard PLG Stalking (on request), (permit needed), Trophy fee after success	EUR 10,000 –
<b>Reduction</b>			
Eland (f.) April - July			EUR 550 –
Giraffe (f.)			EUR 1,300 –
<b>Specials</b>			
Sable			EUR 5,900 –
Roan			EUR 6,900 –
<b>14 days Leopard hunt (on request) (permit needed) (on availability of tag &amp; approved by MET) incl. transfer, costs of hunt &amp; accommodation, 12 days hunt, hunt guidance 1:1</b>			
Trophy fee at booking			EUR 10,000 –
Trophy fee after success			EUR 8,500 –
Bait – Plains game according to list			

- A wounded animal is considered to be shot and will be charged for.
- To offer our guests a successful hunt for strong trophies, and to maintain the ecosystem we can only issue a limited number of permits. We ask you to consider this when booking and announce your desired trophies in advance.
- For Leopard, Cheetah and Rhino CITES documents must be requested. For that, we need a color copy of your valid passport, and current home address. This needs to be done at least 4 weeks prior to your trip!
- Permits for Leopard and Cheetah are only valid during the booked hunting season of the Named guest - Permits can't be moved / transferred to a different date. These permits should be applied for again in the case of a new hunt even in the same year.
- Additional costs: Cost of a permit for - Leopard EUR 550 - and cheetah EURO 350 - These costs are non-refundable, whether shot or not, and even in the wake of a renewed application must be paid.





<b>Package 1:</b>	5	Impala (f.)	EUR 2,350 –
	1	Eland (f.)	
	1	Mountain Zebra	
	1	Oryx	

• Dates: May - July

<b>Package 2:</b>	1	Impala	EUR 1,290 –
	2	Impala (f.)	
	1	Springbuck	

• Dates: May - September

<b>Package 3:</b>	1	Impala	EUR 1,950 –
	1	Springbuck	
	1	Oryx	
	1	Duiker / Steenbuck	

• Dates: March - November

<b>Package 4:</b>	1	Impala	EUR 3,390 –
	1	Springbuck	
	1	Blue Wildebeest	
	1	Mountain Zebra	
	1	Oryx	

• Dates: March - November

<b>Package 5</b>	1	Eland	EUR 4,950 –
	1	Impala	
	1	Black Wildebeest	
	1	Mountain Zebra	
	1	Steenbuck	

• Dates: March - November

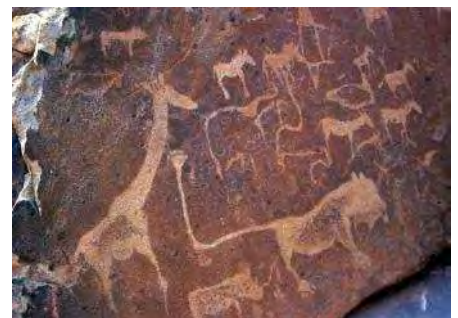
If trophies are not harvested, the trophy-fees of the booked package will be refunded.



**All packages:** Packages can be upgraded to include additional Trophy species from Blaser Safaris Trophy price list (page 4) limited to available quota. Additional days may need to be booked on certain species.



<b>Sightseeing Tour</b>	Daily rate per person <ul style="list-style-type: none"> <li>• incl. Guide</li> <li>• Accommodation with full board</li> <li>• Toyota double cab or VW kombi</li> </ul>	EUR 480 –
-------------------------	---	-----------





**Option 1:**

**Etosha National park & West Coast Tour – 4 day/3 night from/to Sney Rivier Lodge EUR 1,920 –/person (at least: 2 pers.)**

DAY 01

Departure from Sney Rivier Lodge – Etosha Nationalpark – Okaukuejo Camp see also [www.etoshanationalpark.org/de/unterkunft/okaukuejo](http://www.etoshanationalpark.org/de/unterkunft/okaukuejo) overnight stay

DAY 02

Trough Etosha Nationalpark and then South West to Twyfelfontein, Damaraland and Bushman Engravings (World Cultural Heritage site), overnight stay

DAY 03

Drive to Cape Cross – Seal Colony – down to the West Coast to Swakopmund, Skeleton Coast – [www.capecross.org](http://www.capecross.org), overnight stay

DAY 04

Swakopmund morning and lunch and then back to Sney Rivier Lodge

**Option 2:**

**Desert and Sea Tour – 4 day/ 3 night from/ to Sney Rivier Lodge EUR 1,920 –/person (at least: 2 pers.)**

DAY 01

Departure from Sney Rivier Lodge – drive to Namib Desert, Soussusvlei Lodge – 2 nights [www.soussusvleilodge.com](http://www.soussusvleilodge.com)

DAY 02

Soussusvleilodge and Desert Dunes Tour – Namib Desert, overnight stay

DAY 03

Soussusvlei – and then South West Coast to Swakopmund, Skeleton Coast – [www.capecross.org](http://www.capecross.org), overnight stay

DAY 04

Swakopmund morning and lunch and then back to Sney Rivier Lodge

**Option 3:**

**Combined Tour – Etosha Nationalpark/Desert and West Coast Tour EUR 3,360 –/person 7 day/6 night from/to Sney Rivier Lodge (at least: 2 pers.)**

DAY 01

Departure from Sney Rivier Lodge – Etosha Nationalpark – Okaukuejo Camp see also [www.etoshanationalpark.org/de/unterkunft/okaukuejo](http://www.etoshanationalpark.org/de/unterkunft/okaukuejo) overnight stay

DAY 02

Trough Etosha Nationalpark and then South West to Twyfelfontein, Damaraland and Bushman Engravings (World Cultural Heritage), overnight stay

DAY 03

Drive to Cape Cross – Seal Colony – down to the West Coast to Swakopmund, Skeleton Coast – [www.capecross.org](http://www.capecross.org), overnight stay

DAY 04

Swakopmund/Walvis Bay area and Jetty lunch

DAY 05

Swakopmund – drive to Namib Desert, Soussusvlei Lodge – 2 nights, [www.soussusvleilodge.com](http://www.soussusvleilodge.com)

DAY 06

Soussusvlei and Desert Dunes Tour, Namib Desert

DAY 07

Soussusvlei and back to Sney Rivier Lodge



<b>Costs included</b>	15 % VAT on daily rates and accommodation fees
	Breakfast, Lunch & Dinner incl. house wine, juice at meals
	Accommodation in chalets
	Daily cleaning and laundry service
	Hunting licenses
	Services of hunting guides, trackers, skinners and drivers
	Preparation of the hunting trophy in the field and delivery to the local Namibian taxidermist.

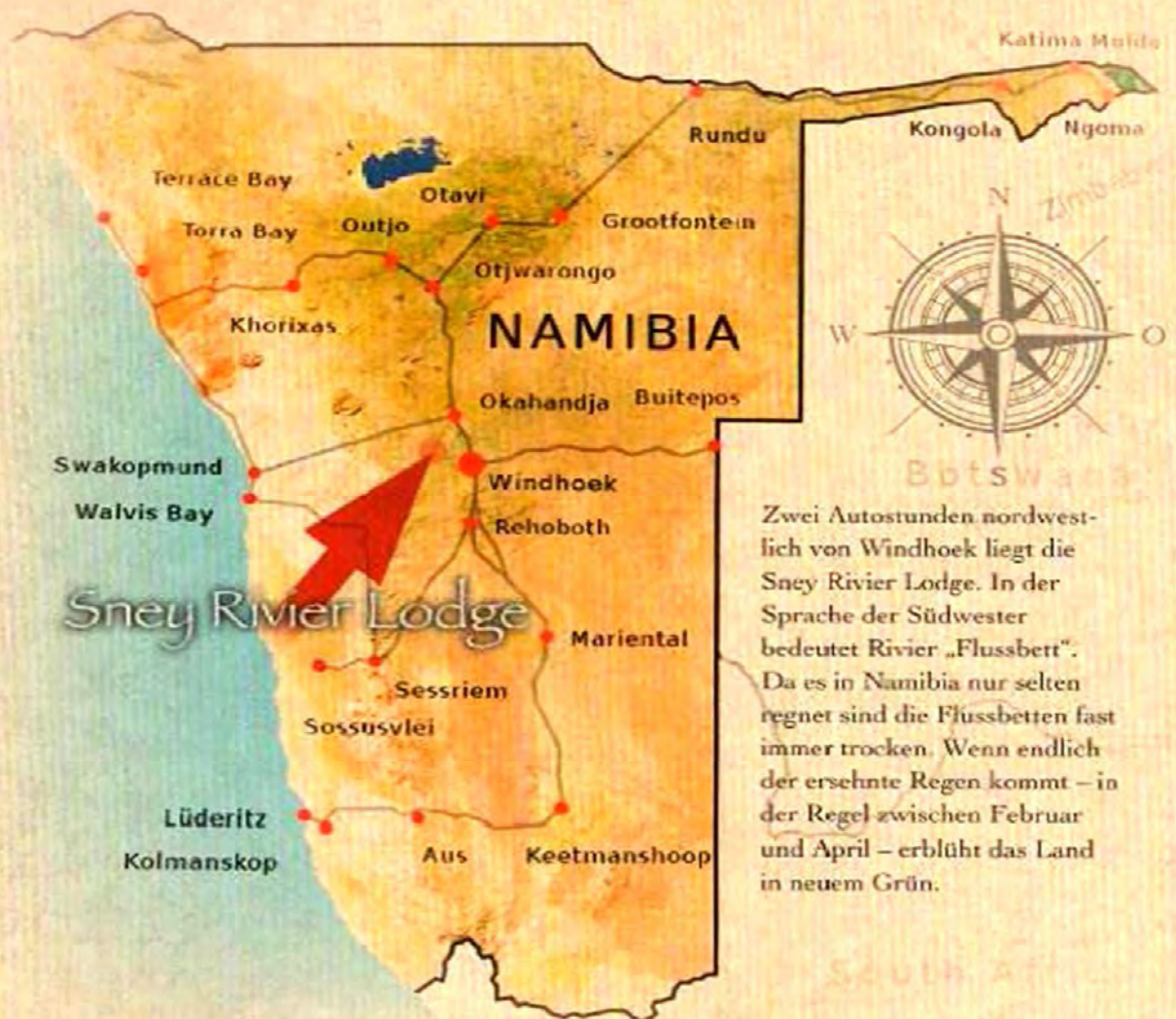
<b>Costs not included in all hunts and packages:</b>	All flights (we can organize your flights to Namibia)	On Request
	Travel Insurance	On Request
	Trophy fees	According to list
	Permit for cheetah	EUR 350 –
	Permit for leopard	EUR 550 –
	Lodge exclusive	On Request
	Taxidermist-, freight and postage fees for the trophies	On Request
	Import fees that could possibly be raised by countries other than Namibia	On Request
	Use shooting range with rifle/person incl. rifle	EUR 25 –
	Accounting of the ammunition like the numbers of pieces	
	Use shooting range for trap/person incl. rifle, 25 pieces of ammunition, clay pigeon	EUR 25 –
	Any additional beverages	
	Suggested tips:	
	for the Professional hunter /day / hunter	EUR 20 –
	the tracker / day / hunter	EUR 5 –
	the lodge staff / day / chalet	EUR 30 –
	International phone calls and fax deliveries	On Request
	Tours and entry fees	On Request
	Booking fee per hunter	EUR 200 –
	Booking fee per observer	EUR 100 –





# DAS LAND

Namibia ist mehr als doppelt so groß wie Deutschland. Unendliche Weiten und die abwechslungsreiche Landschaft beeindrucken vor allem Besucher aus Europa, denn Namibia ist nur dünn besiedelt und weitgehend naturbelassen.



**Recommended Travel Documents**  
**Equipment:**

- Valid passport (as required visa)
- Air Tickets
- Firearm certificate / European firearm pass, hunting license
- Travel insurance copy
- Important phone numbers (doctor, insurance, emergency contact etc.)

**Hunting Gear**

- Rifle, Ammo, lockable Gun case, Scope
- Binoculars, spotting scope
- Cleaning-set
- Hunting Knife
- Small Hunting-backpack
- Pocket-/Headlamp

**Clothing**

- 2 Pairs robust, tearproof cotton pants
- 1 Pair of shorts
- 1 Light Sweater/Jumper
- T-Shirts
- Underwear
- Socks
- Swimwear
- Hats, gloves, scarves
- Rain gear (foldable)
- Fleecejacket
- Windbreaker or similar
- Belt, suspenders
- Vest
- Reserve shoelaces
- Jogging suit / pyjama
- Slippers
- Shoes
- Gaiters
- lightweight, broken-in mountain or hiking boots

**Medicines / personal care**

- First Aid Kit, personal medicines
- Personal toiletries
- Nail scissors, nail file
- Lib balm
- Sunscreen
- Insect repellent

**Other matters**

- Glasses/contact lense, extra glasses, Sunglasses
- Sewing Kit
- Adapter for power sockets
- Travel alarm clock
- Camera, Video Camera
- Batteries, spare batteries, chargers
- Lighter
- Writing material



- Plastic bags
- Earplugs
- Books, reading material
- Handkerchiefs, towelettes

**Entry requirements**

Please note the entry requirements for the respective country. Information can be obtained at the responsible consulate. In case a visa is needed, please be advised, that the acquisition is your own responsibility.

**Vaccination requirements:**

Please note the vaccination requirements for the respective country. Information can be obtained at the responsible tropical institute. In case a vaccination is needed, please be advised, that the adherence is your own responsibility.

The General Terms and Conditions of Blaser Safaris GmbH apply. Blaser Safaris GmbH acts as an intermediary and is not the organizer of hunting tours. Subject to errors and alterations of prices and programs. Version 10/2018.

## Blaser Safaris GmbH

[www.blaser-safaris.com](http://www.blaser-safaris.com)  
[info@blaser-safaris.com](mailto:info@blaser-safaris.com)

**Büro Österreich | Office Austria:**  
Europastraße 1/1 · A-7540 Güssing  
AT +43 (0) 33 22 – 4 29 63 -20

**Büro Deutschland | Office Germany:**  
Ziegelstadel 1 · D-88316 Isny  
DE +49 (0) 7562 – 9 14 54 -14

