



## Newfoundland 2019



## Hunting in Newfoundland:

Our partner Victoria Outfitters Lodge specializes in Spring Black Bear hunting, Fall Black Bear hunting, and Moose hunting, as well as fishing (Ouananiche, Brook Trout and Atlantic Salmon), Corporate Getaways, Wilderness Excursions and some of the best sightseeing Newfoundland has to offer.



## The Lodge:

The Lodge is located about 40 miles south of Millertown in Central Newfoundland. The site overlooks the Victoria River, near key gathering sites and migration routers for all types of big game and has attracted the interest of hunters and anglers alike.

The Lodge is located on one of the best areas for Black Bear and other big game hunting anywhere in the Province of Newfoundland and Labrador – a Province that boasts some of the largest black bear in North America and some of the highest moose densities in the world.

Our site consists of a main lodge with telephone services and four modern cabins. The Lodge contains a very spacious and cheerful dining and lounge area overlooking the Victoria River, as well as a full kitchen and two fully equipped bathrooms (one fully wheelchair accessible bathroom). The three adjacent cabins are designed to accommodate up to three people each, and a fourth cabin is available which has a room divider for privacy and can accommodate up to four people, perfect for a small family.





## Air Travel:

Newfoundland is the most easterly point in North America and is the closest to Europe. When flying to Newfoundland you will fly from your nearest airport to Canada (generally via Toronto, Halifax or St. John's) and finally into Gander International Airport. **Upon arrival in Gander you will be met at the airport on Sunday and drive 3 hours to Victoria Lodge (2 hours on blacktop pavement and 1 hours on gravel road).** It may be possible to arrange Saturday pick-up, but this is dependent upon cabin availability. You will return to Gander the following Sunday (if hunting 6 days) or Friday (if hunting 10 days) for departure that evening or early the following morning.

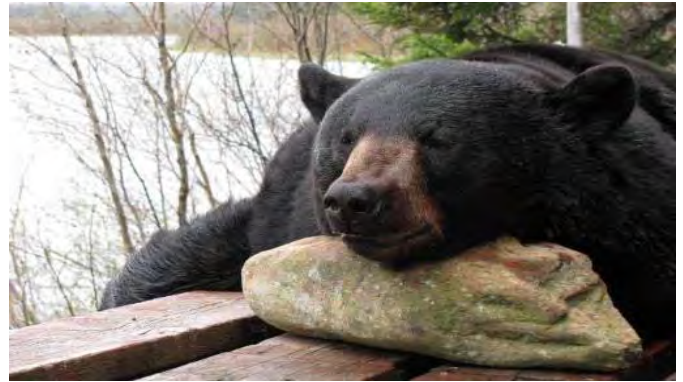




## Black Bear Hunting:

Black Bears are native to Newfoundland and are among the Largest Black Bears in North America with spring weights exceeding 500 lbs.; one of the largest weighed in at 676 lbs. and would put this bear close to 800 lbs. in the fall.

Our partner is located in prime areas for some of the largest Black Bears in North America (potential trophy size). The average weight of the Black Bears are from 200 lbs. to 350 lbs. with always the chance of taking one over 500 lbs. Skull size to date have ranged from 16 inch to over 21 inch with the largest length being 78 inch from nose to tail.



## Prices 2019

Black Bear Hunt	
10 hunting days, hunt guidance 2:1 Trophy Fee 1 <sup>st</sup> Black Bear included	EUR 4,600 –
6 hunting days, hunt guidance 2:1 Trophy Fee 1 <sup>st</sup> Black Bear included	EUR 3,400 –
Trophy Fee 2 <sup>nd</sup> Black Bear	EUR 1,200 –
Surcharge for hunt guidance 1:1 per hunter	EUR 300 –

- Spring Hunting May 27 to July 1
- Fall Hunting: September 9 to October 28

## Moose Hunting:

Moose are not native to Newfoundland but they introduced in 1904 and from there the numbers have grown tremendously. This area is one of the largest moose populations per square mile and has a high re-population rate.

The moose shed their antlers during the winter and they begin to grow again in the early spring until late August when they have reached their full potential. **The bull moose breeding season or "rut" begins towards late September and continues until mid October.**



## Prices 2019

Moose Hunt	
10 hunting days, hunt guidance 2:1 Trophy Fee Moose	EUR 4,000 – EUR 1,500 –
6 hunting days, hunt guidance 2:1 Trophy Fee Moose	EUR 3,000 – EUR 1,500 –
Surcharge for hunt guidance 1:1 per hunter	EUR 300 –

- Fall hunting: September 9 to November 11



## Prices 2019

### Combined Hunt Black Bear and Moose

10 hunting days, hunt guidance 2:1	EUR	5,000 –
Trophy Fee Moose	EUR	1,500 –
Trophy Fee 1 <sup>st</sup> Black Bear	EUR	600 –
6 hunting days, hunt guidance 2:1	EUR	4,000 –
Trophy Fee Moose	EUR	1,500 –
Trophy Fee 1 <sup>st</sup> Black Bear	EUR	600 –
Trophy Fee 2 <sup>nd</sup> Black Bear	EUR	1,200 –
Surcharge for hunt guidance 1:1 per hunter	EUR	300 –

- Fall hunting: September 9 to November 11  
(Black Bear season ends on October 28)

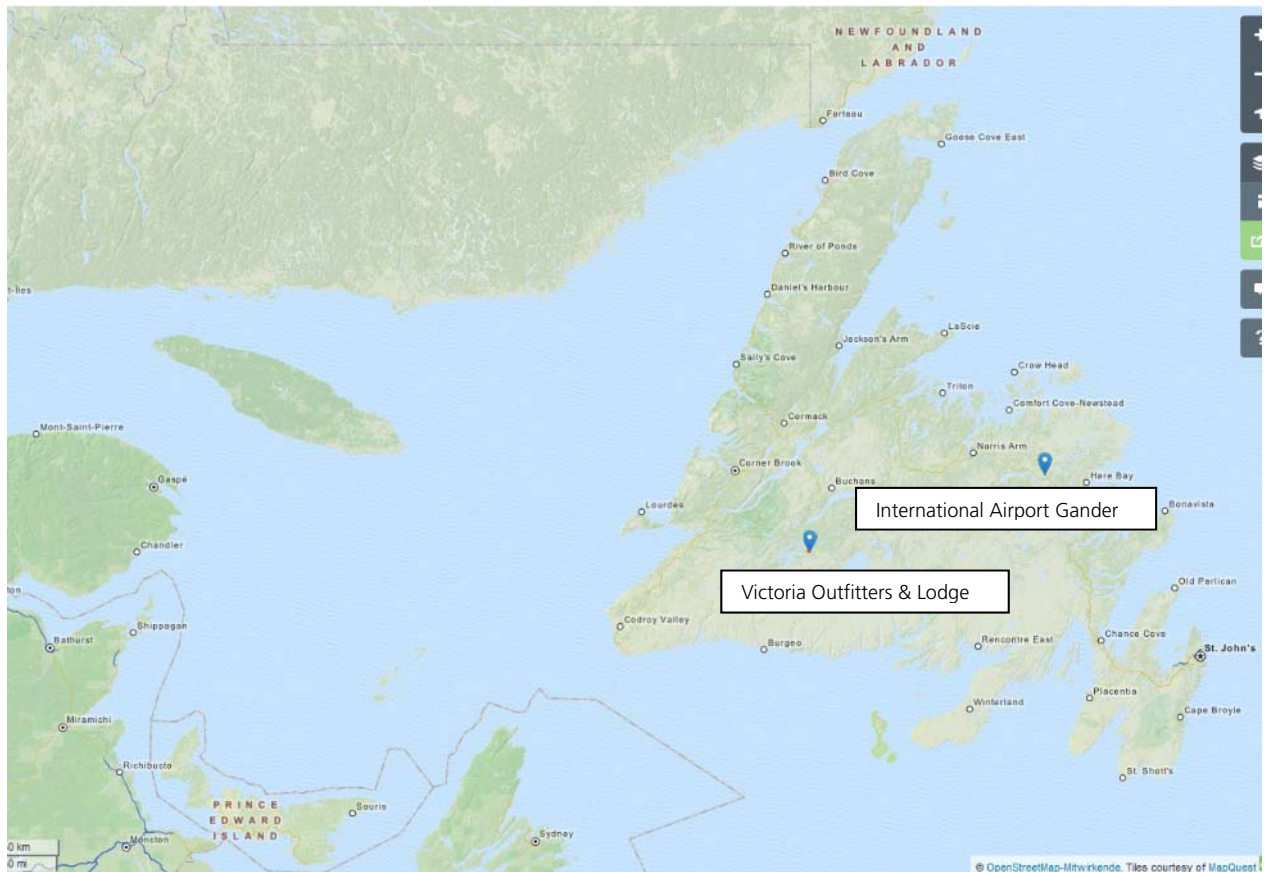
Included in hunting costs	Return transfer from Gander to Victoria Lodge
	Full board accommodation during the hunt
	Hunt guidance with a licensed guide (including transportation around hunting area)
	Hunting licenses
	Field preparation of trophies and delivery to taxidermist
	Export Permit
	Hunter Preservation Fee HPF (EUR 40,-)
	Goods and service tax

Additional costs:	Accompanying person 10 days	EUR	1,575 –
	6 days	EUR	1,000 –
	Youth between 13 - 17 years 10 days	EUR	1,200 –
	6 days	EUR	750 –
	Children 12 years and under		For of charge
	Conservation fee for each hunter / angler	EUR	50 –
	Fishing (Trout: May 22 to July 1, Salmon: August) per person per day	EUR	250 –
	Taxi to the Albatross Hotel (if required)		On request
	Accommodation for two nights (arrival- and departure day) in Gander		On request
	Travel insurance		On request
	Flights - we are happy to organize flights to Newfoundland		On request
	Rifle hire / rifle	EUR	150 –
	Trophy Fee for Moose and Black Bear		See list
	Wounded game is considered shot and thus is charged for		See list
	Suggested tip for the PH:	CAD	50 –/day
	for the staff		or more CAD 25 –/day
	Trophy pre-preparation and shipment		On request
	Spirits, beverages		On request
	Organization fee per hunter	EUR	200 –
	Organization fee per accompanying person	EUR	100 –





Map:





**Recommended Equipment:**

Below are some examples of personal things you may wish to bring for your hunt in Newfoundland. Please be aware that the climate can be cold and/or wet during hunting season, so we advise you to check the weather in the week before arrival and prepare accordingly.

**Personal Items and Clothing**

Any Medications  
 Toiletries  
 Good Waterproof Rain Suit  
 Knee-High Waterproof Boots (e.g. Muck Boot)  
 Light Footwear for Lodge  
 Light and Heavy Jacket  
 Layers of Comfortable Shirts and Pants  
 Thermal Underwear  
 Light and Heavy Socks  
 Face/Ski Mask (useful in cold weather)  
 Hat (camo with reverse orange is useful)  
 Waterproof Gloves  
 Gun Cleaning Kit  
 Camera / Batteries

**Hunting/Field Equipment**

Rifle or Bow for Big Game\*  
 Rifle or Shotgun for Small Game\*\*  
 Cases for Transport  
 Ammunition or Arrows (recommend 20 rounds per firearm)  
 Hunting Knife / Sharpening Stone  
 Binoculars / Range Finder  
 Cleaning Kit  
 Flashlight (Torch) / Head Lamp / Batteries  
 Bug Net / Bug Spray (esp. Spring Bear)  
 Sunscreen / Sunglasses  
 Chap Stick  
 Blister Kit  
 Water Bottle  
 Windproof Lighter / Matches

**Please Note**

- \* Rifle should be 270 caliber or larger and bow should be at least 50lb draw weight.
- \*\* We recommend that you sight your rifle for 200 yards and know where your bullet is hitting at 100 and 300 yards.
- \*\*\* Please visit the Royal Canadian Mounted Police website to find more information on entering Canada with a firearm, including necessary forms, etc: <http://www.rcmp-grc.gc.ca/cfp-pcaf/information/visit/index-eng.htm>

**Entry requirements**

Please note the entry requirements for the respective country. Information can be obtained at the responsible consulate. In case a visa is needed, please be advised, that the acquisition is your own responsibility.

**Vaccination requirements:**

Please note the vaccination requirements for the respective country. Information can be obtained at the responsible tropical institute. In case a vaccination is needed, please be advised, that the adherence is your own responsibility.

The General Terms and Conditions of Blaser Safaris GmbH apply. Blaser Safaris GmbH acts as an intermediary and is not the organizer of hunting tours. Subject to errors and alterations of prices and programs. Version 12/2018.





NOTES:





NOTES:





NOTES:



## Blaser Safaris GmbH

[www.blaser-safaris.com](http://www.blaser-safaris.com)  
[info@blaser-safaris.com](mailto:info@blaser-safaris.com)

**Büro Österreich | Office Austria:**  
Europastraße 1/1 · A-7540 Güssing  
AT +43 (0) 33 22 – 4 29 63 -20

**Büro Deutschland | Office Germany:**  
Ziegelstadel 1 · D-88316 Isny  
DE +49 (0) 7562 – 9 14 54 -14

