



Zimbabwe 2018

Zambezi Valley





Hunting in Zimbabwe

Our **Partner Charlton McCallum Safaris (CMS)** owns and hunts in the Dande North and East concessions in Northern Zimbabwe. As of 2012 they have bought out their neighbors, who were hunting on the North and South of them, meaning now that they have TOTAL control of the Dande North and East areas. These areas are adjacent and mean that CMS hunts the largest concession in Zimbabwe. It is without doubt the best dangerous game area in the Zambezi Valley!

GAME IN THE DANDE NORTH AND EAST They have a very high success on elephant bulls and have had the highest Valley average for the last 3 years. There are numerous resident elephant bulls in Dande but an added bonus is our 20 odd km boundary with Mozambique, which is well worth checking as we do get some super bulls coming in especially early season. It is good classical tracking hunting and gives you the best overall elephant experience. The Zambezi Valley elephant have attractive long thin tusks and one would hope to shoot a bull in the 35-45 lbs. category. We do however shoot the odd 50 lbs. but that is unusual. If it is Tuskless that you are after Dande has hundreds of elephant cows and if hunted hard, you will experience numerous approaches and have no problem finding one.

On Buffalo hunts, they have a 100% success rate, with animals having good hard bosses. The nice thing with hunting Dande is that there are large numbers of resident buff- both herds and Dagga boys which means you will track and see buff every day before shooting your bull which is what a quality buff area should offer- unlike other areas the Dande does not rely on buff needing to cross in from another area before you have the chance to hunt them.

They have far too many lions in their area and with a very conservative quota; it goes without saying that they have been very successful on lion. The Valley leopard are not as big as the Lowveld cats however they are chunky cats averaging out at around the 130lbs mark and are very numerous in Dande and in the last 10 years there has only been two failures and considering that they get 9 leopard tags a year Dande has had plenty of happy leopard hunters!

Plains game animals are there but one has to work hard on them as is the rest of the Zambezi valley and one could expect 3 to 4 plains game animals on a 10-day hunt. They also have a little camp on the Zambezi river which one can go and catch tiger fish and bream or game view from in the stunning Mapata Gorge



Dande North Safari Area (DSA)

Dande North consists of Ward 1, Dande Safari Area (DSA), Ward 2 and Ward 11. When you hunt with CMS these areas are hunted as one area giving you over 500 000 acres in the Zambezi valley to hunt in!

Area

Ward 1:

Ward 1 is a communal area in the Northern part of the Dande concession. Ward 1 has about 15 km of river frontage with croc and hippo hunting and fantastic tiger fishing. The hunting in ward 1 is excellent especially for elephant bulls that come in early season for the crops and in July when the Masua berries are out. There are lots of buffalo and in particular old dagga boys in this area also!



Accommodation Matombo

In Ward 1, they have one tented camp called Matombo Camp with the most beautiful views of the Zambezi River.



Area DSA

The central part is the Dande Safari Area (DSA). This is a National Parks area meaning that there are no people living in this truly beautiful part of the Zambezi Valley. It is dotted with numerous springs and valleys and has high concentrations of all game and in particular lion and leopard.

In the DSA, they have 2 camps, Pedza Pasi & Mururu camp.



Accommodation Pedza Pasi

Pedza Pasi is situated in the East of the safari area, is our permanent camp, and can cater for bigger groups. Their main camp, just 2.5 Kilometers from Zimbabwe's unmarked Eastern border with Mozambique. The camp has very comfortable accommodation for up to six guests, and is the preferred camp for early season trophy elephant bull hunts. There is a resident "camp herd" of buffalo and some dagga boys which graze on the lawn almost every night as well as the local leopard, hyena and pride of lion just to make sure no one wanders around after lights out! Power is supplied by a 220 – 240V generator and water is from a deep borehole.





Accommodation Mururu

Their second DSA camp is Mururu camp. It is also chalet styles/ en suite loos and showers. While it is a smaller camp, then Pedza is still very comfortable and hearing lions and leopards most evenings is the norm!

Located a one hour drive due west of Pedza Pasi, Mururu is a smaller more discreet camp also sleeping six comfortably. It is situated on the banks of a seasonal river under deep, deep shade provided by magnificent grove of Natal Mahoganies along the Manyemu river.

The big 4 are all common nighttime visitors, particularly lion and leopard. It is unusual not to have one of the two big cats in camp every night. Power is supplied by a silenced 220 – 240V generator and water from the river. Drinking water is bottled.

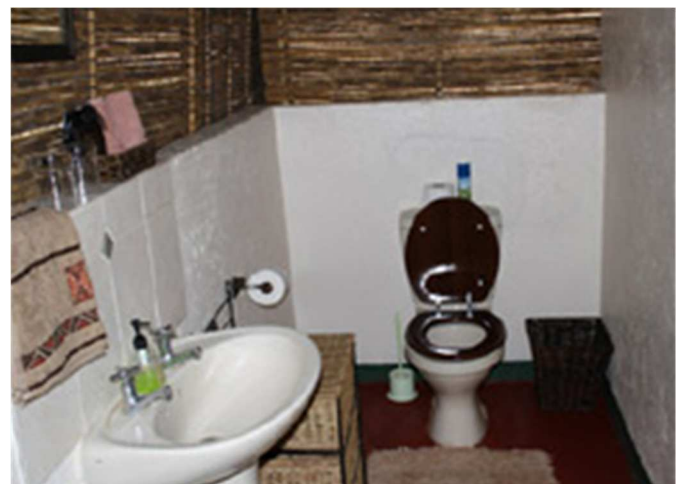


Area
Ward 2 and
Ward 11

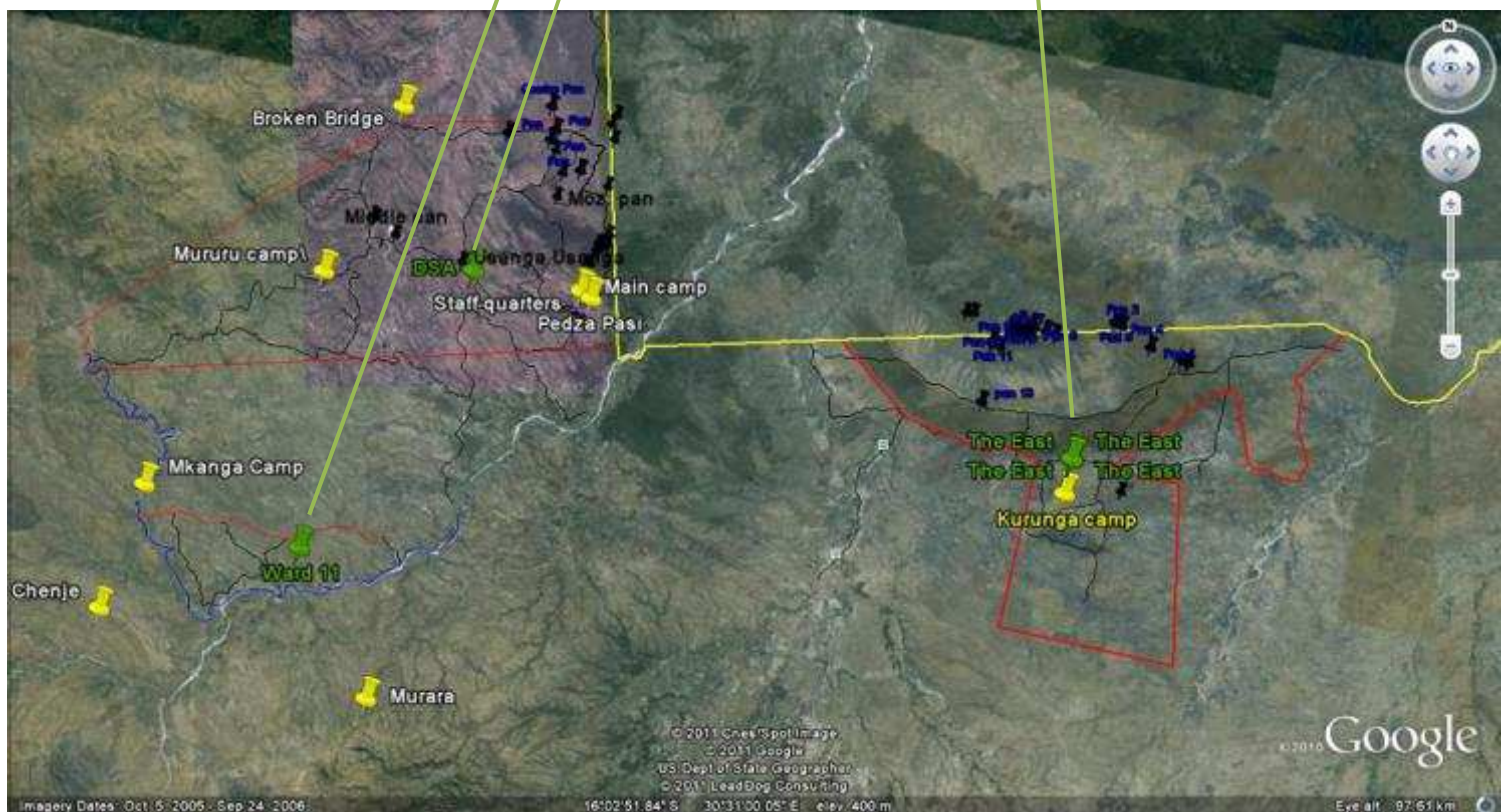
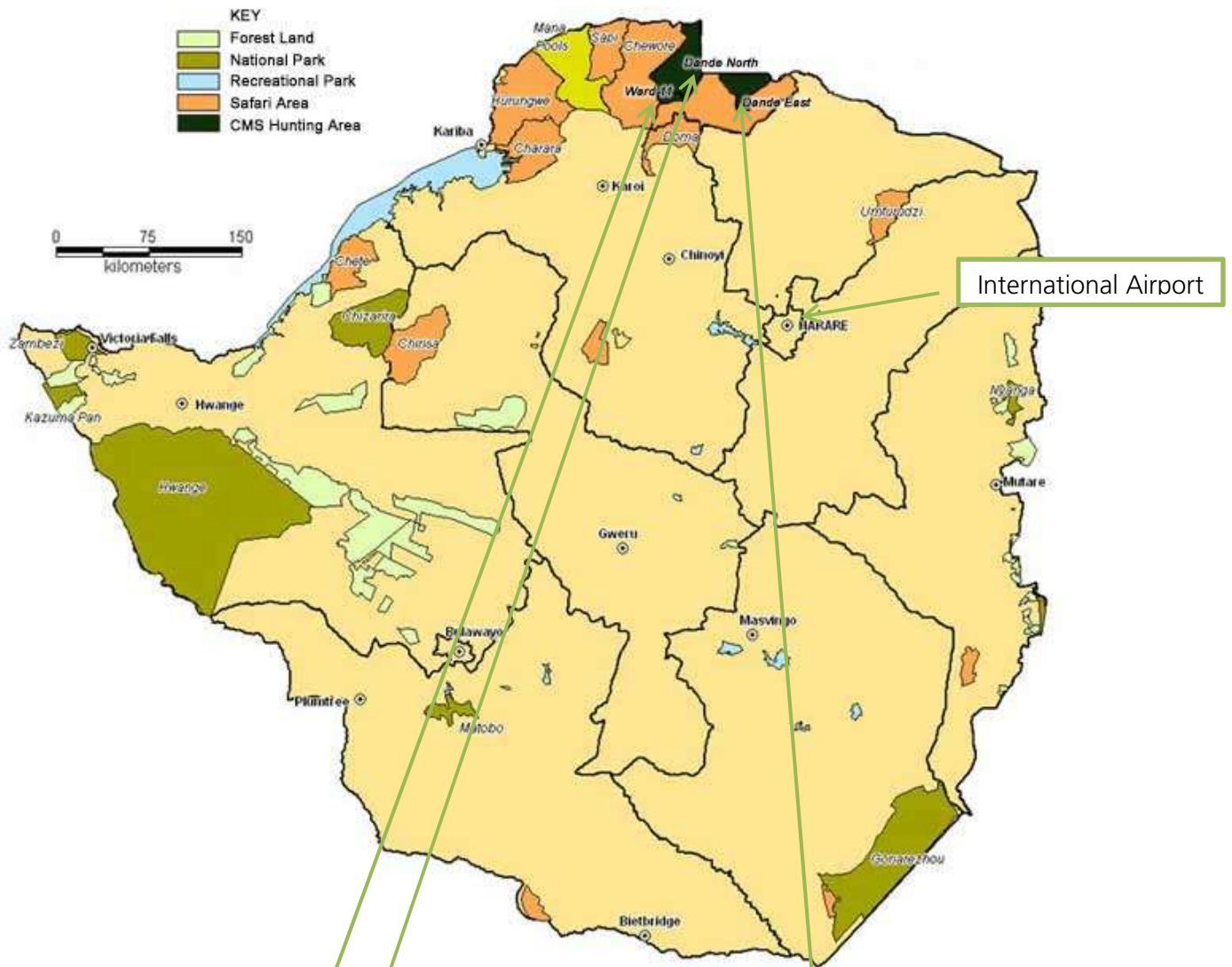
Ward 2 and ward 11 are in the south bordering the DSA and they have one beautiful camp on the Mukanga River not surprisingly called Mukanga camp. Ward 2 and 11 have a number of villagers within the area however, as with ward 1 there are huge unsettled areas that have incredible concentrations of buffalo. This area is very rich in all wildlife as it has several big rivers running through it including the Angwa, Mukanga, Yirira and Manyemu rivers. As a result with the flood plains on these river systems it is not surprising that there is such good buff and plains game to be found!



Accommodation It is chalet styles/ en suite loos and showers and caters for up to 3 hunters.
Mukanga



Access Either by road which is approximately a six-hour drive from Harare or by charter straight in to Pedza Pasi.



Dande East

Dande east is a horseshoe shaped area with a long 25 km border with Mozambique. For many years, the previous operator had a very basic fly camp and only hunted it early season for elephant bulls for which it is excellent. After filling his quota early, the area was left until the next season.

For the last 3 years, they have made a huge concerted effort at anti-poaching and have arrested numerous poachers and have taken down over 3000 snares. They are excited with the numbers of game coming back including really big herds of sable and lots of Kudu however this game still has to go back to Mozambique by mid-season when the pans dry but it is their plan to put in two permanent water points this year which will hopefully mean that they will become resident year round.

Area

Dande East:

The East is a big flat concession south of the unmarked 16th degree border with Mozambique, comprising mostly of very thick, virgin "Jesse bush" which elephant bulls absolutely love and for 3 years now boasted the best elephant bull average in the whole Zambezi Valley!. It is typical big elephant bull country, and over the years has produced excellent results. The bulls tend to move in to their concession from Mozambique early season (February to the end of June) often to raid crops. The East also has some resident sable, buffalo, kudu, lion and leopard, which mostly can be added to ongoing hunts at trophy fee only.



Accommodation

Karunga Camp

They have done a lot of work at Karunga and is a very comfortable chalet styled camp. The Karunga camp is a very well appointed brick under that camp accommodating up to four guests. It is located on the edge of a big natural "pan". Power is supplied by 220 – 240V generator and water is from a borehole.



- Area Ward 11:** When hunting the East one is entitled to hunt Ward 11 as well. Ward 11 is an unusually productive and game rich area as it has 15km of Angwa River frontage as well as 12km of Mkanga River frontage. There is also the Marirangwe range of hills running through the concession. This diverse habitat makes it so special. Excellent for buffalo, elephant, leopard, lion and bushbuck.
- Accommodation Chehuchi fly camp:** The Chehuchi fly camp is comprised of 4 east african style luxury tents with ensuite facilities set on the banks of the Mkanga River. We have deliberately kept the camp all canvas and as quiet as possible.



Access A three and a half hour drive or a fifty-minute charter direct to camp from Harare.

Possible Itinerary

DAY 01	Departure from Europe
DAY 02	Arrive in Harare, Air Charter or Transfer to Camp
DAY 03 -14	for example 12 hunting days
DAY 15	Transfer or Air Charter to Harare, Return flight
DAY 16	Arrive in Europe

Access Dande North and Ward 11:

Either by road which is approximately a six-hour drive from Harare or by charter straight in to Pedza Pasi.

Access Dande East:

A three and a half hour drive or a fifty-minute charter direct to camp from Harare.





Prices 2018

Hunt guidance 1:1 on	Hunting days	Price per day
Plains Game	1-10	USD 650 –
Tuskless Elephant	10	USD 1,000 –
Buffalo	10	USD 1,095 –
Buffalo, Croc or Hippo	12	USD 1,195 –
Buffalo, Croc & Hippo	14	USD 1,100 –
Leopard	14	USD 1,000 –
Buffalo & Sable	14	USD 1,100 –
Buffalo & Tuskless Elephant	14	USD 1,250 –
Elephant Bull	14/10	USD 1,250 –
Elephant Bull & Buffalo	14/15	USD 1,550 –
Buffalo & Leopard	14/15	USD 1,450 –
Lion	18	POR
Buffalo, Leopard & Sable	18	USD 1,295 –
Lion & Buffalo	21	USD 1,800 –
Big 4	24	POR
Hunt guidance 2:1		Deduct USD 100 – from the daily rate per day and hunter





Game	Price
Baboon	USD 90 –
Buffalo Bull	USD 5,500 –
Buffalo Cow	USD 1,375 –
Bushbuck	USD 935 –
Bushpig	USD 440 –
Cheetah *	USD 4,950 –
Civet Cat	USD 385 –
Crocodile *	USD 5,500 –
Duiker	USD 330 –
Eland *	USD 1,650 –
Elephant Trophy	USD 16,500 –
Elephant Tuskless	USD 5,500 –
Genet	USD 275 –
Giraffe *	USD 1,925 –
Grysbok	USD 495 –
Hippo *	USD 5,500 –
Honey Badger	USD 220 –
Hyena Spotted *	USD 605 –
Impala Male	USD 275 –
Impala Female	USD 165 –
Jackal	USD 275 –
Klipspringer	USD 825 –
Kudu Bull	USD 1,320 –
Kudu Cow	USD 660 –
Leopard	USD 7,150 –
Lion	USD 11,000 –
Lioness	USD 4,950 –
Monkey	USD 25 –
Nyala *	USD 4,125 –
Porcupine	USD 220 –
Reedbuck *	USD 660 –
Sable Antelope *	USD 6,050 –
Serval Cat	USD 550 –
Tsessebe *	USD 935 –
Warthog	USD 490 –
Waterbuck *	USD 1,925 –
Wildebeest *	USD 880 –
Zebra	USD 1,375 –

- Wounded animals are considered to be shot and will be charged for
- The above Trophy fees are subject to change
- * Animals on quota are only available in certain areas and may require a change of area and trophy fee.



Costs included	Meet & Greet at the Airport
	Service of a licensed professional hunter
	Hunt guidance 1:1
	Safari-Staff (Trackers, Skinner,)
	Accommodation and board food, soft drinks in camp:
	Daily laundry services

Costs not included	Flights (we are happy to arrange your flights to Zimbabwe/Harare)	On request
	Travel insurance	On request
	When carrying your own weapon – for organization and paperwork	USD 175,-
	Hotel before / after the hunt if needed	On request
	Observer fee / day each	USD 250,-
	Camerman & editing packages	
	• Filming of the hunt / day	USD 200,-
	• Complete Editing package – includes editing, DVD authoring, custom case artwork and a copy of the raw footage. Includes up to five copies of the edited DVD.	USD 100,-
	Additional copies - each	USD 10,-
	• Trophy Shot DVD Package – includes all trophy shots with a short approach clip and post shot comments – flat fee	USD 200,-
	• Raw Unedited Footage – flat fee	USD 100,-
	• Blu-ray – to any of the three options add – flat fee	USD 100,-
	Fishing day at our Zambezi River camp / day	USD 100,-
	Trophy fees	See price list
	CITES Tags for Elephant, Leopard and Crocodile / each	USD 100,-
	Field Preparation of trophies / Hunter	USD 600,-
	Government Levy on daily rate	2 %
	Government Levy on trophy fees	4 %
	VAT on Food & Accommodation / day	USD 22,50
	DAPU (dande anti-poaching unit) on Daily Rate & Trophy Fees	1 %
	Pre-Baiting (Cat hunts) / per day + Bait fees	USD 300,-
	Transfer Day – if option taken to relocate to another area / person	USD 175,-
	Rifle Hire, if desired per hunting day	USD 20,-
	Weapons available for hire: Scoped .375 H & H CZ / Scoped .375 Blaser / Scoped .416 Rigby	
	Ammunition per box used	On request
	Taxidermist-, freight and postage fees of the trophies	On request
	*Mars is mandatory even if you have medical insurance as it enables us to evacuate the client from the area to a medical facility.	
	All alcoholic beverages & spirits	On request
	Personal expenses	
	Suggested tip:	
	for the professional hunter per day	USD 100,-
	the camp manager a total	USD 200,-
	the trackers, skimmers, cooks, waiters etc. a total	USD 400,-
	Organization fee hunter	USD 300,-
	Organization fee observer	USD 150,-

Transfer Rates – Air Charter & Drive:

From	To	Single Engine Cessna 206	Twin Engine Navajo	Drive
Harare	Zambezi Valley	USD 1,205,-	USD 1,760,-	USD 250,-

- Note: All rates are quoted in USD, as one-way trip (double for round trip) and are subject to change.
- Any other Transfers / Air Charter: Price on Request



Recommended Equipment: The following list would generally be sufficient for a 10 day safari:

- 3-4 long sleeved shirts.
- 2 Pairs of trousers. Note: trousers with zip off legs work very well.
- 2 Pairs of shorts
- 3 T-Shirts or Shirts
- 3-4 Pairs of good quality cotton socks.
- 1 Jacket
- 1 thick fleece for the early mornings and evening.
- 1 Pair of comfortable soft soled walking shoes.
- Lightweight gloves
- Wide brimmed hat or baseball cap.

Beige or green colored, tear-resistant clothing, preferably cotton, are recommended. Most hunters TRAVELLING WITH TO LIGHT HUNTING CLOTHES! Choose darker green or brown tones! In the camps, there is a laundry service, so not too much clothing needs to be taken.

Attention: Camouflage is forbidden in Zimbabwe!!

- Pens and an A4 folder for travel formalities
- Locks for your luggage
- Two seperate wallets
- Mobil phone and charger
- Mini sewing kit
- Lighter / matches waterproof
- Toiletries such as toothbrush, toothpaste, comb/ hair brushes, nail brush
- Moisturing Cream, Lip balm
- Razor & blades, shaving gel
- Small vanity mirror
- Small wash cloth – towels are supplied though in our camp
- Toilet paper and/or kleenex, wet wipes/hand sanitizer or no-water/antibacterial soap – very handy in the safari vehicle
- Suncream
- Personal medication, First aid kit (Plasters, antiseptic ointment, painkillers, charcoal tablets ...) *
- Backpack
- Water bottle
- Flashlight, spare batteries
- Hunting knife

- Binoculars
 - Sunglasses
 - Spare glasses
 - Small Photographic equipment (camera, film, batteries – dust-proof plastic bag)
 - Adapter
 - GPS or Compass, if you want to use
 - Weapon, variable riflescope (ideally 1,5-6fach), ammunition, cleaning utensils, rifle case
(Do not scrimp on ammunition, on site the ammunition purchase is not possible!)
- Passport, driving license, EFP (European firearms pass). Credit card, traveler's checks, airline ticket.

If you are planning a hotel stay before or after the hunt, a jacket and tie must belong to your luggage!

***Your kit should include:**

- Sunscreens
- Eye, Ear and Nose drops
- Thermometer (digital)
- Scissors and forceps
- Field dressings and plasters
- Disinfectants
- Wound and healing balm
- Insect repellent
- The usual long-term medication

And the following medicines:

- Against fever, diarrhea and vomiting
- Stomach discomfort
- Sickness
- Sunburn
- Insect bites
- Circulatory problems
- Insomnia
- **For pain relief (always carry with you! In tent or camp, it does not use if you have an accident in the field!)**
- Constipation
- Against sore throat

Entry requirements

Please note the entry requirements for the respective country. Information can be obtained at the responsible consulate. In case a visa is needed, please be advised, that the acquisition is your own responsibility.

Vaccination requirements:

Please note the vaccination requirements for the respective country. Information can be obtained at the responsible tropical institute. In case a vaccination is needed, please be advised, that the adherence is your own responsibility.

The General Terms and Conditions of Blaser Safaris GmbH apply. Blaser Safaris GmbH acts as an intermediary and is not the organizer of hunting tours. Subject to errors and alterations of prices and programs. Version 11/2017.



NOTES:

[illegible]

Blaser Safaris GmbH

www.blaser-safaris.com
info@blaser-safaris.com

Büro Österreich | Austria:
Europastraße 1/1 · A-7540 Güssing
AT +43 (0) 33 22 – 4 29 63 -20

Büro Deutschland | Germany:
Ziegelstadel 1 · D-88316 Isny
DE +49 (0) 7562 – 9 14 54 - 14

