

# MOZAMBIQUE ZAMBEZE DELTA 2023



STALKING

**Blaser**  
safaris









Mozambique is located in southern Africa. Here you can experience untouched, pristine wilderness. One of the best hunting destinations world-wide awaits you: You can hunt in regions, in which trophy hunting has not been conducted for 16 years and consequently there are high quality trophies!

## CONTENT

General travel information.....	4
HUNTING AREA COUTADA XI.....	6
Accommodation.....	7
Hunting packages.....	8
Individually combinable .....	10
HUNTING AREA CAHORRA BASSO.....	14
Accommodation.....	15
Combi-hunting packages.....	16
Recommended equipment .....	20
Notes.....	21

# GENERAL TRAVEL INFORMATION



## CURRENCY

1 metical (MT) = 100 centavos. You can also pay in USD.



## TIME DIFFERENCE

CET + 1 h



## ELECTRICITY

220 V/50 Hz AC power, international 2-phase plugs. Both camps in “C11” are supplied with solar power and a generator is provided for emergencies.

Plug sockets for charging batteries are available in the camps. Most chargers will work with 110 – 240 V, but please check before traveling whether your devices are suitable. If this is not the case, you have to pack an inverter from 220 V to 110 V.

You will also need an adapter for the South African system. You can purchase this at most airports.



## CLIMATE

The north and center of the country have a wet-dry tropical climate, while the south is subtropical. There are no seasons as such, only a shift from the rainy season to the dry season. In the north, the Northeast Monsoon brings the rainfall (December to March). At the center of the country, cyclonic rainfalls occur between November and March. In the south, it is hot and rainy from October to March, otherwise rather cool.

The average temperatures from June to September are between 18 – 30 °C (64 – 86 °F).

In October and November, midday temperatures can reach up to 38 °C (100 °F).

### Advice

Avoid putting too much strain on your body, especially while acclimating to the country. Make sure you are drinking enough fluids, especially during the hot season. You should eat light meals and avoid fatty foods; excessive alcohol consumption will further reduce the body's resilience, which is already impaired.



## ENTRY REQUIREMENTS

**Please send to us for the exhibition of hunting license and gun import** (min. 12 weeks in advance): 1 passport photo, exact physical address, color copy of your passport, color copy EU firearms pass and a color copy hunting license.

Please note the entry requirements for the respective country. Information can be obtained at the responsible consulate. In case a visa is needed, please be advised, that the acquisition is your own responsibility.

If foreign nationals intend to go on excursions to the nearby Kruger National Park in South Africa, they should apply for a multiple-entry visa before entering Mozambique. Re-entry visas are not normally available at border crossings or in Mozambique itself.

At the airport in Beira, you will need to fill out a single entry form at passport control (Visa approx. USD 50,-). You will then make your way to baggage reclaim, where a member of our outfitter team will meet you. They will take care of your visa with the pre-prepared documentation. You will then be taken to the air charter within the same airport, which will transport you to the hunting grounds.



## HEALTH

Medical treatment outside of the major cities of Maputo and Beira is problematic.

### Vaccinations

There are no mandatory vaccinations for traveling here, except when entering from a country where yellow fever is present (otherwise not necessary). Please note that when entering Mozambique, officials will check whether you are carrying your vaccination certificate (yellow fever certificate). Entry may be refused without an international vaccination certificate. Travelers also have the option to get vaccinated at the airport (this costs around USD 50). However, apart from the basic vaccinations for all travelers (diphtheria/tetanus/polio, hepatitis A, typhoid), the Center for Travel Health recommends that independent tourists and campers have preventative vaccinations for hepatitis B, rabies and meningitis, and that independent tourists, campers, and people traveling as part of a tour should additionally be vaccinated against cholera.

Malaria prophylaxis is recommended for traveling anywhere in the country. Malarone should be taken, as this product is highly tolerable. It is also worth carrying Lariam tablets (prescribed by your doctor) in your luggage. Please contact a qualified doctor to discuss malaria prophylaxis. In the past, medications such as Malarone and Lariam have been shown to work well.

Despite not a single case of hepatitis or tetanus having been recorded, we still recommend the appropriate vaccinations.

Please be aware that the hunting camps are several hundred miles from the nearest pharmacy or medical treatment center. So please bring enough of your regular medication and an emergency travel medical kit with you. We highly recommend consulting a qualified doctor as early as possible before your travels!

### Caution

As mosquitoes transmit various diseases (e.g. malaria and dengue fever), we recommend comprehensive mosquito protection. Following standard hygiene measures, such as frequent hand washing, is generally sufficient. Caution is advised when consuming raw fruit and salads. You should never drink tap water. Taking a travel medical kit containing your regular medication plus medication for common travel-related illnesses is highly recommended.

Swimming or wading in bodies of standing or slow-flowing water must be avoided at all costs due to the serious risk of being infected with schistosomes (bilharzia).

Please note the changes in vaccination requirements for travelers via Johannesburg, South Africa on outbound and especially on inbound flights (in force since 6/6/2011): Because of the current development mentioned above, we recommend (it is not currently law, but you should take it into consideration) that travelers have yellow fever vaccinations for visiting the following countries in southern Africa: Mozambique, Zimbabwe, Botswana.



## INSURANCE

Taking out travel insurance in case you fall ill or require ambulance services is recommended.





## HUNTING AREA COUTADA XI

The hunting ground of our Partner, Zambeze Delta Safaris, belongs to the Marromeu Complex and is located in central Mozambique. It adjoins the mighty Zambezi River and covers an area of approximately 200,000 ha.

Hunting season is from 1st April to 30th November.



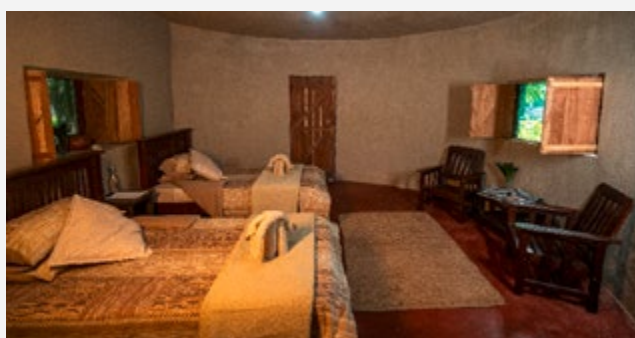


# ACCOMMODATION



## MUNGARI CAMP

A traditional East African safari tented camp. There are ten tents all with en-suite bathrooms, toilet, hot and cold running water. Each tent can accommodate two people.



## NGAZI CAMP

Originally, an old hunting camp in the days of Portuguese rule, our partner decided to renovate and renew this camp in 2007. Now it has 3 main bedrooms both with en-suite bathrooms and with hot and cold water.

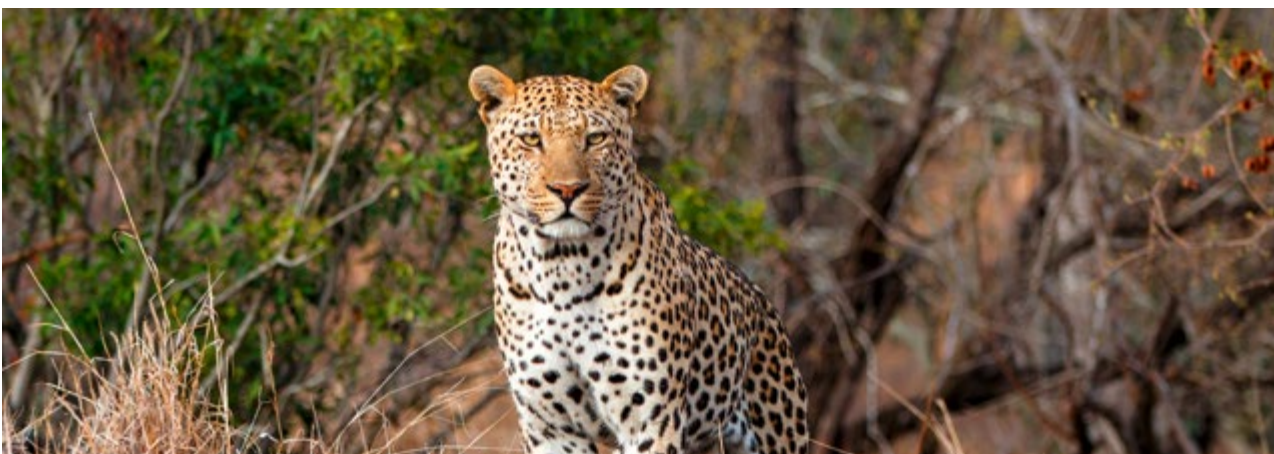
# HUNTING PACKAGES

## PACKAGE BUFFALO



SPECIAL PRICES 4 hunters booked in one group and same travel dates / hunter	Price (USD)
10 hunting days (hunt guidance 1:1) incl. VAT – 1 hunter	16,750,–
10 hunting days (hunt guidance 2:1) incl. VAT, price per hunter	16,000,–
7 hunting days (hunt guidance 1:1) incl. VAT – 1 hunter	15,350,–
7 hunting days (hunt guidance 2:1) incl. VAT, price per hunt	14,600,–
License, trophy fee of game specified in package, daily rate & 17 % VAT, full board, beverages	Included in the package

## PACKAGE LEOPARD



	Price (USD)
10 hunting days incl. Leopard dogs incl. 17 % VAT	42,000,–
14 hunting days incl. Leopard (baited) incl. 17 % VAT	36,800,–
License, trophy fee of game specified in package, daily rate & 17 % VAT, full board, beverages	Included in the package



## ADDITIONAL COSTS

	Price (USD)
Flights (we are happy to organize your flights to Mozambique)	On request
Travel insurance	On request
Daily Rate observer plus 17 % VAT	300,–
Meet & Greet Airport in Beira / Lusaka Hunter payable at the Airport	50,–
Visa – they will issue your visa on arrival in Beira or Lusaka. We recommend to do the visa before the hunt (information directly at the embassy price changes possible)	Approx. 50,–
Transfer by car Lusaka Camp – Lusaka / car max. 2 people	1,000,–
Air charter from Beira to camp / round trip / person incl. VAT	1,650,–
Air charter from Beira or Mungari to Cahora Bassa / round trip / Air craft incl. VAT	6,000,–
Hunting license per hunter	500,–
Rifle license, per rifle (entry Zambia & Mozambique USD 500,–)	275,–
Please note – on arrival at the airport with rifle and ammunition, the rounds will be counted by customs/police. On departure every missed round (shot round) will be charged – payable at the airport	2,–/piece
Rifle rental, if desired, per rifle, per day	50,–
Bird license, per week, per hunter	500,–
Export Basic Fee	440,–
Trophy pre-preparation and shipment	On request
Community fee per hunter / per observer / per night	50,–
Suggested tip for the professional hunter / per day / per hunter	100,–
Suggested tip for the camp manager a total per safari	200,–
Suggested tip for the trackers, skimmers, cooks, waiters etc. a total per guest	500,–
Organization fee per hunter	300,–
Organization fee per accompanying person	150,–

Booked licenses are payable, regardless of whether or not any game is shot. Buffalo & Leopard can only be taken on Big 5 daily rates or the relevant package where it is included. A 2nd Buffalo can be taken on request. A wounded animal is considered to be shot and will be charged for.

# INDIVIDUALLY COMBINABLE

## DAY RATE

	Price (USD)
Plains Game (hunt guidance 1:1), per day	750,–
Plains Game (hunt guidance 2:1), per day	550,–
Big Five (hunt guidance 1:1), per day	1,250,–
Big Five (hunt guidance 2:1), per day	950,–
Accompanying person, per day	300,–
Bird Collectors	750,–

## ADDITIONAL COSTS

	Price (USD)
Flights (we are happy to organize your flights to Mozambique)	On request
Travel insurance	On request
Daily Rate observer plus 17 % VAT	300,–
Meet & Greet Airport in Beira / Lusaka Hunter payable at the Airport	50,–
Visa – they will issue your visa on arrival in Beira or Lusaka. We recommend to do the visa before the hunt (information directly at the embassy price changes possible)	Ca. 50,–
Transfer by car Lusaka Camp – Lusaka / car max. 2 people	1,000,–
Air charter from Beira to camp / round trip / person incl. VAT	1,650,–
Air charter from Beira or Mungari to Cahorra Bassa / round trip / Air craft incl. VAT	6,000,–
License fees for wished trophies (Cahorra Basso and C 11)	See list
Hunting license, per hunter	500,–
Rifle license, per rifle (entry Zambia & Mozambique USD 500,–)	275,–
Please note – on arrival at the airport with rifle and ammunition, the rounds will be counted by customs/police. On departure every missed round (shot round) will be charged – payable at the airport	2,–/piece
Rifle rental, if desired, per rifle, per day	50,–
Bird license, per week, per hunter	500,–
VAT for Mozambique on daily rate	17 %
Export basic fee	440,–
Baits for hunting for leopard, lion, hyena and crocodile	
Export fee / trophy	See list
Export fee hippo: skull USD 500,–; skin USD 750,–; feet / per foot: USD 100,–	
Trophy pre-preparation and shipment	On request
Community fee per hunter / per observer / per night	50,–
Suggested tip for the professional hunter / per day / per hunter	100,–
Suggested tip for the camp manager a total per safari	200,–
Suggested tip for the trackers, skimmers, cooks, waiters etc. a total per guest	500,–
Organization fee per hunter	300,–
Organization fee per accompanying person	150,–



## TROPHY FEES (PRICES USD)

### BUFFALO



LF	TF	EF
1,700,-	3,875,-	300,-

### BUSH PIG



LF	TF	EF
255,-	770,-	220,-

### BUSHBUCK (CHOBE)



LF	TF	EF
440,-	990,-	220,-

### ELAND



LF	TF	EF
1,705,-	3,630,-	300,-

### DUIKER



	LF	TF	EF
Ducker Blue	420,-	1,320,-	120,-
Ducker Grey	325,-	550,-	120,-
Ducker Red	420,-	1,375,-	120,-

### HYENA



LF	TF	EF
400,-	1,980,-	275,-

### IMPALA



LF	TF	EF
330,-	770,-	220,-

### CROCODILE



	LF	TF	EF
Crocodile	990,-	3,630,-	550,-
Non Trophy, under 9 ft	990,-	3,000,-	

### KUDU



LF	TF	EF
1,200,-	2,420,-	275,-

LF = License Fee | TF = Trophy fee | EF = Export fee

## SUNI (LIVINGSTONE'S)



LF	TF	EF
420,—	1,375,—	120,—

## HARTEBEEST (LICHTENSTEIN)



LF	TF	EF
901,—	1,980,—	275,—

## HIPPO (LIMITED PERMITS)



LF	TF	EF
2,200,—	5,500,—	Auf Anfrage

## LEOPARD



LF	TF	EF
3,025,—	8,250,—	600,—

## NYALA



LF	TF	EF
1,450,—	2,970,—	275,—

## ORIBI



LF	TF	EF
330,—	1,320,—	120,—

## BABOON



LF	TF	EF
105,—	200,—	120,—

## REEDBUCK



LF	TF	EF
420,—	825,—	220,—

## SABLE



LF	TF	EF
1,450,—	7,260,—	275,—

LF = License Fee | TF = Trophy fee | EF = Export fee



WARTHOG



LF	TF	EF
330,—	825,—	220,—

WATERBUCK



LF	TF	EF
1,450,—	2,860,—	275,—

ZEBRA (SELOUS)



LF	TF	EF
1,980,—	3,630,—	275,—

LF = License Fee | TF = Trophy fee | EF = Export fee

# HUNTING AREA CAHORRA BASSO

Hunting season is from 1st April to 30th November.

International Airport for the hunts in Cahorra Basso is Lusaka (Zambia) where our partner will pick you up and transfer into camp by car (approx. 3–4 hours).

Export fee (per trophy – see list) covers costs for transportation from Camp to Emiac in Maputo.

Emiac organize all the paperwork and documents to transport the trophies from Maputo to South Africa. Included are the disinfection of trophies and crating. Costs are separately charged.

Transport costs from South Africa to Europe are separately charged. Trophies need to be transported via South Africa, since there are not any Cargo Airlines linking Maputo directly with Europe.





## ACCOMMODATION



## CAMP

# COMBI-HUNTING PACKAGES

## COMBI-PACKAGE

---



		Price (USD)
Combination crocodile and Plains Game	7 hunting days (hunt guidance 1:1) incl. 17% VAT	6,500,—
Combination hippo, crocodile and Plains Game	7 hunting days (hunt guidance 1:1) incl. 17% VAT	8,800,—
Buffalo, crocodile and Plains Game	10 hunting days (hunt guidance 1:1) incl. 17% VAT	16,000,—
Leopard, crocodile and Plains Game	14 hunting days (hunt guidance 1:1) incl. 17% VAT	21,900,—
Leopard and buffalo / crocodile and Plains Game	14 hunting days (hunt guidance 1:1) incl. 17% VAT	27,000,—

### Included in the combi-package

---

Daily Rate and 17 % VAT, full board, accommodation, beverages

---

## ADDITIONAL COSTS

	Price (USD)
Flights (we are happy to organize your flights to Mozambique)	On request
Travel insurance	On request
Daily Rate observer plus 17 % VAT	300,–
Meet & Greet Airport in Beira / Lusaka Hunter payable at the Airport	50,–
Visa – they will issue your visa on arrival in Beira or Lusaka. We recommend to do the visa before the hunt (information directly at the embassy price changes possible)	Approx. 50,–
Transfer by car Lusaka Camp – Lusaka / car max. 2 people	1,000,–
Air charter from Beira to camp / round trip / person incl. VAT	1,650,–
Air charter from Beira or Mungari to Cahorra Bassa / round trip / Air craft incl. VAT	6,000,–
Hunting license, per hunter	500,–
Rifle license, per rifle (entry Zambia & Mozambique USD 500,–)	275,–
Please note – on arrival at the airport with rifle and ammunition, the rounds will be counted by customs/police. On departure every missed round (shot round) will be charged – payable at the airport	2,–/piece
Rifle rental, if desired, per rifle, per day	50,–
Bird license, per week, per hunter	500,–
Export Basic Fee	440,–
Trophy pre-preparation and shipment	On request
Community fee per hunter / per observer / per night	50,–
Suggested tip for the professional hunter / per day / per hunter	100,–
Suggested tip for the camp manager a total per safari	200,–
Suggested tip for the trackers, skimmers, cooks, waiters etc. a total per guest	500,–
Organization fee per hunter	300,–
Organization fee per accompanying person	150,–



## MORE TROPHY FEES (PRICES USD)

### BUFFALO



LF	TF	EF
1,700,-	3,875,-	300,-

### BUSH PIG



LF	TF	EF
255,-	875,-	220,-

### BUSHBUCK (CHOBE)



LF	TF	EF
440,-	990,-	220,-

### ELEPHANT Non-Trophy



LF	TF	EF
Keine Lizenz	8,500,-	Nicht exportierbar, Auf Anfrage

### DUCKER GREY



LF	TF	EF
325,-	550,-	120,-

### HYENA



LF	TF	EF
400,-	1,980,-	275,-

### IMPALA



LF	TF	EF
330,-	770,-	220,-

### CROCODILE



Wildart	LF	TF	EF
Krokodil	990,-	3,630,-	550,-
Non Trophy, unter 9 ft	990,-	3,000,-	

### KUDU



LF	TF	EF
1,200,-	2,420,-	275,-

LF = License Fee | TF = Trophy fee | EF = Export fee

## SHARPE'S GRYSBUCK



LF	TF	EF
420,-	1,375,-	120,-

## HIPPO (LIMITIERTE PERMITS)



LF	TF	EF
2,200,-	5,500,-	Auf Anfrage

## BABOON



LF	TF	EF
105,-	200,-	120,-

## LEOPARD



LF	TF	EF
3,025,-	8,250,-	600,-

## REEDBUCK



LF	TF	EF
420,-	825,-	220,-

## WARTHOG



LF	TF	EF
330,-	825,-	220,-

LF = License Fee | TF = Trophy fee | EF = Export fee

# RECOMMENDED EQUIPMENT

Please remember to not take too much laundry, because there is a daily laundry service at the camp.

In a few cases, it can happen that you stay in Spike camps, but you never usually stay more than one night outside the base camp.

**IMPORTANT:** Military type cammo is not permitted in most African countries, but Realtree types are normally accepted. Suitable colors for hunting clothes are dark khaki or olive green.

## Gear list

---

1 Pair hunting boots

---

1 Pair Swamp Boots

---

4 Pair good socks

---

1–2 Pairs long hunting pants, 1–2 short hunting pants (if you hunt in short hunting pants)

---

3 hunting shirts

---

Hunting jacket

---

Gloves

---

Gaiters

---

Warm sweater or jumper

---

Light weight rain gear

---

Hat or cap

---

Sun cream

---

Casual wear for evenings

---

Malaria prophylaxis

---

Mosquito spray

---

“Skin So Soft” by Avon (for Tsetse-fly’s)

---

Soft gun case (because you cannot take the case in the Air Charter and cannot let in Beira.

Only for “non-separable weapons” in long cases). A soft case is also a good shock absorber for the Jeep wanderings).

---



## NOTES









**Blaser Safaris GmbH**

Europastraße 1/1, A-7540 Güssing | Österreich/Austria  
AT +43 (0) 33 22 – 4296320 | DE +49 (0) 7562 – 9145414  
[www.blaser-safaris.com](http://www.blaser-safaris.com) | [info@blaser-safaris.com](mailto:info@blaser-safaris.com)

Photo: Free Vector Maps, Adobe Stock/Fotolia, Pexels, Pixabay, iStock