

NAMIBIA 2023



STALKING

Blaser
safaris





Go hunting for more than twenty different types of game in Namibia's stunning scenery with Blaser Safaris. Make use of the various leisure- and sightseeing activities on location.

CONTENT

General travel information.....	5
Accommodation and surroundings	8
General hunting information.....	10
Cost of hunt and accommodation.....	11
Trophy fees	12
Package Leopard – 14 days	16
Recommended equipment	18
Sightseeing tour.....	20
Notes	22



GENERAL TRAVEL INFORMATION



CURRENCY

Namibia Dollar (NAD) / Cent



TIME DIFFERENCE

CET +1 hour (end of March to end of September), CET -1 hour (end of October to start of March),
CET (end of September to end of October and start of March to end of March)



CLIMATE

It is very hot from October to January. The winter months (May - September) are pleasantly warm during the day (daytime temperatures of 20-25°C), but it may be frosty at night.

May and June are the best times to travel. It is best to visit Skeleton Coast National Park between June and October, Sossusvlei and the Etosha Pan from March to May.



ELECTRICITY

220/240 volt, 50 hertz alternating current
Three-pin plug sockets (adapter required).



ENTRY REQUIREMENTS

Please note the entry requirements for the respective country. Information can be obtained at the responsible consulate. In case a visa is needed, please be advised, that the acquisition is your own responsibility.

Entry requirements when traveling with children (under 18)

When you check in for your flight in Europe, you will need to present an international birth certificate.

Passport

German and Austrian citizens should hold a passport valid for a minimum period of 6 months from the date of entry into the country.

Importing and exporting trophies

Please note that EU provisions on importing and exporting trophies may have changed since you last traveled. Since May 01, 2011, trophies are no longer allowed to be transported in luggage. If the hunter insists on transporting boar tusks, etc. in their luggage, they do so at their own risk. Please note the respective rules in your country if you are not an EU resident.



HEALTH

Hospitals

Medical care in Namibia's cities is good – especially in the capital city Windhoek, where patients can be looked after at several private clinics that would satisfy European standards. But in many smaller, remote locations, you will either find a basic hospital or a first-aid station. They are listed in the telephone directory under 'Emergency services' on the first page for each locality.

You can find doctors under 'Classified medical listings' on the orange pages in the telephone directory. The German embassy in Windhoek has a list of doctors who speak German. [Please contact your respective embassy for information on doctors who speak your language.] Our camp manager can also be of help here. As the country is so sparsely populated and there are huge distances between localities, you should always be aware that the nearest doctor or hospital may be a day's journey away.

Vaccination requirements

A valid yellow fever vaccination certificate is required for all travelers aged 1 or over if arriving from countries with risk of yellow fever transmission. This is not necessary if arriving from Germany. All travelers need to show proof that they have been vaccinated against polio or have a booster if necessary (in Germany, the vaccination is an injection with all three types).

The Health Service of the Foreign Office further recommends vaccination protection against tetanus, diphtheria and hepatitis A, for long-term stays over 4 weeks or special exposure additionally hepatitis B, rabies, typhoid and meningococcal disease (quadruple vaccine).

The standard vaccinations for children and adults recommended by the Robert Koch Institute (see <https://www.rki.de/EN/>) should be up to date. Please refer to the vaccination authority in your country for precise information.

Please note the changes in vaccination requirements for travelers via Johannesburg, South Africa on OUT-BOUND and above all RETURN FLIGHTS (which came into force on 6/6/2011):

Because of the current development mentioned above, we RECOMMEND (it is not currently law, but you should take it into consideration) travelers have yellow fever vaccinations if visiting the following countries in southern Africa: Mozambique, Zimbabwe, Botswana

Malaria

There is a high risk of contracting the disease all year round along the Kavango and Kunene rivers as well as in the Caprivi Strip.

There is a medium risk (higher during the rainy season, lower in the dry season) in the north and northeast of the country with the regions of Omusati, Oshana (eastern Ovamboland), Ohangwena, Oshikoto (northern Etosha Pan) as well as in the northeastern parts of the Otjozondjupa and Omaheke regions.

There is a low risk in the adjacent parts of the country heading towards the south.

Malaria is transmitted when you are bitten by the nocturnal blood-sucking *Anopheles* mosquito. If left untreated, it can often be deadly to Europeans who are not immune to it, especially if the dangerous malaria tropica is contracted. The disease can also break out weeks or even months after your stay. If you develop a fever during this time, you must tell the doctor treating you that you have visited a region where malaria is prevalent. Courses of malaria treatment are available on the market in Germany in the form of various prescription drugs (e.g. Malarone, Doxycycline, Lariam). [Please note the respective vaccination treatments for your home country.] The choice and personal suitability as well as side effects and/or incompatibility with other medications must be discussed with a doctor specializing in tropical or travel medicine before chemoprophylactic drugs are taken.

Due to the risks of being infected by mosquitoes, we recommend that all travelers:

- wear clothes that cover the body (long trousers and long shirts),
- repeatedly apply insect repellent on all exposed body parts in the evening and at night
- sleep under a mosquito net, if necessary

There are other illnesses and diseases that can only be prevented by protecting yourself against mosquitoes.

Diarrhea and cholera

Most diarrheal diseases, cholera in particular, can be avoided with appropriate food and drinking-water hygiene. Only drink water from a safe source, for example bottled water. Never drink tap water. In an emergency, you can use filtered, disinfected or boiled water. When traveling, you must also use drinking water to wash dishes and clean your teeth. When it comes to food: Boil it, peel it or disinfect it. You must keep flies away from your food. Wash your hands with soap as often as you can, but always after bowel movements, before preparing food, and before eating.

Other health risks

UV radiation is very high in Namibia. To protect your skin and eyes, sun protection such as clothing that covers the body, hats, sunglasses, and sunscreen must be worn.

Before you travel, seek advice from a clinic or doctor specializing in tropical medicine (for example, in Germany: <http://www.dtg.org/> or <http://www.frm-web.de>). Please seek medical advice from the relevant institution in your home country.

In addition to our general exclusion of liability, please note the following important information:

No liability can be assumed for the accuracy or completeness of the medical information or for any damages or losses that may occur. You remain responsible for your own health.

These statements from trained medical professionals are for informational purposes only. They are not a replacement for consulting a doctor. They are specific to direct travel from Germany and longer stays in the destination. The information may deviate for shorter trips, entry from other countries, and travel to other parts of the country. This information must not be used for the traveler's individual circumstances independent of the safari. You must seek in-depth medical advice from a doctor specialized in tropical medicine prior to travel. Please note the respective medical advice for your home country.



INSURANCE

Taking out travel insurance in case you fall ill or require ambulance services is recommended.

ACCOMMODATION AND SURROUNDINGS



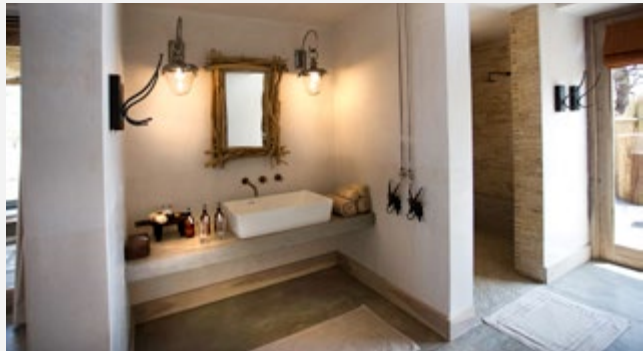
The hunting area starts directly from the lodge, extending over 43,000 hectares. The focus is on stalking Oryx, Mountain Zebra, Springbok, Black Wildebeest, Blue Wildebeest, Impala and Warthog.

Transfer from Windhoek airport to the lodge is about two hours. The Sney Rivier Lodge is an ideal destination that meets the highest standards, both for hunters and their family and guests. The Lodge is harmoniously integrated into the landscape, the lodge also supplies all the amenities that contribute to a relaxing dream vacation.

On the professionally equipped shooting range, you can shoot at targets with distances of up to 400m. Modern hunting weapons are available to hire at the Lodge as requested. In addition, guests can use our hunting course with their own guns (F3).

As a highlight we offer our guests a memorable „sundowner“ on Mount Sney Rivier and a visit to the „hot springs“.





SNEY RIVIER LODGE

Sney Rivier Lodge, built in 2009, offers beautiful luxury and convenience in unparalleled ambiance five chalets located near the main building accommodate a maximum of ten guests, a quiet and relaxed atmosphere is guaranteed.

GENERAL HUNTING INFORMATION



ADDITIONAL COSTS:

Cost of a permit for Leopard € 550,– and cheetah € 350,–

These costs are non-refundable, whether shot or not, and even in the wake of a renewed application must be paid.

WOUNDED ANIMAL:

A wounded animal is considered to be shot and will be charged for.

PERMITS:

To offer our guests a successful hunt for strong trophies, and to maintain the ecosystem we can only issue a limited number of permits. We ask you to consider this when booking and announce your desired trophies in advance.

For Leopard, Cheetah and Rhino CITES documents must be requested. For that, we need a color copy of your valid passport, and current home address. This needs to be done at least 4 weeks prior to your trip!

Permits for Leopard and Cheetah are only valid during the booked hunting season of the Named guest – Permits can't be moved / transferred to a different date. These permits should be applied for again in the case of a new hunt even in the same year.

COST OF HUNT AND ACCOMMODATION

Cost of Hunt and Accommodation	Price (€)
Guided hunt 1:1 incl. accommodation, per day	490,–
Guided hunt 2:1 incl. accommodation, per day	420,–
Observer, accommodation per day	320,–
Arrival and departure day hunter per day	245,–
Arrival and departure day observer per day	160,–
Transfer per person	150,–
Rifle rental per day	25,–
Children up to 14 years old	100,–
Children up to 16 years old	130,–
15 % VAT on daily rates and accommodation fees	Included in the hunting costs
Breakfast, lunch & dinner incl. house wine, juice at meals	Included in the hunting costs
Accommodation in chalets	Included in the hunting costs
Daily cleaning and laundry service	Included in the hunting costs
Hunting licenses	Included in the hunting costs
Services of hunting guides, trackers, skimmers and drivers	Included in the hunting costs
Preparation of the hunting trophy in the field and delivery to the local Namibian taxidermist.	Included in the hunting costs

Additional costs for all hunts and packages	Price (€)
All flights (we can organize your flights to Namibia)	On Request
Travel Insurance	On Request
Trophy fees	According to list
Permit for cheetah	350,–
Permit for leopard	550,–
Lodge exclusive	On Request
Taxidermist-, freight and postage fees for the trophies	On Request
Import fees that could possibly be raised by countries other than Namibia	On Request
Hire rifle (Blaser) per day	25,–
Accounting of the ammunition like the numbers of pieces / round	6,–
Use shooting range for trap/ammunition per round incl. rifle, clay pigeon	1,50
Any additional beverages	
Suggested tips for the Professional hunter /day / hunter	50,–
Suggested tips for the tracker / day / hunter	20,–
Suggested tips for the lodge staff / day / chalet	50,–
Tours and entry fees	On Request
Booking fee per hunter	200,–
Booking fee per observer	100,–

TROPHY FEES

HARTMANN’S ZEBRA



Price (€)
1,400,—

DUIKER



Price (€)
450,—

DAMARA DIKDIK on request



Price (€)
2,800,—

ELAND



Price (€)
2,500,—

CHEETAH on request – permit needed



Price (€)
3,000,—

IMPALA



Price (€)
1,000,—

CARACAL on request – permit needed



Price (€)

500,–

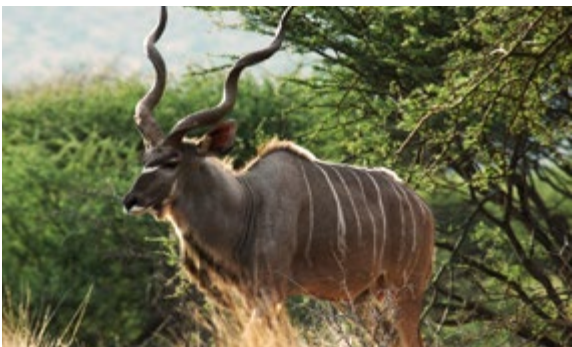
KLIPSPRINGER on request



Price (€)

2,100,–

KUDU



Price (€)

2,850,–

ORYX



Price (€)

1,000,–

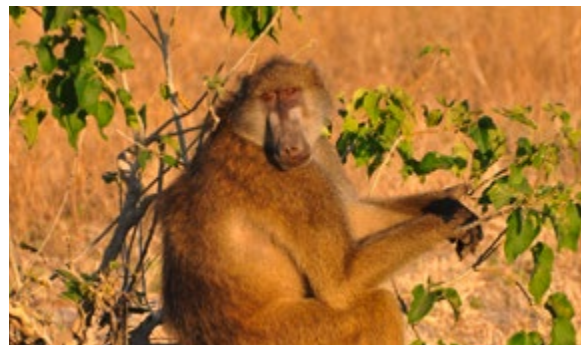
BROWN HYENA on request – permit needed



Price (€)

4,000,–

BABOON (if the trophy is exported)



Price (€)

100,–

STEENBUCK



Price (€)

450,—

GIRAFFE



Price (€)

3,000,—

JAKAL (if the trophy is exported)



Price (€)

150,—

SPRINGBUCK



Price (€)

650,—

BURCHELL'S ZEBRA



Price (€)

1,100,—

WARTHOG



Price (€)

600,—

WATERBUCK



Price (€)

2,200,—

BLUE WILDEBEEST



Price (€)

1,200,—

BLACK WILDEBEEST



Price (€)

1,850,—

LEOPARD on request – permit needed



Price (€) (trophy fee after success)

10,000,—

SABLE ANTHILOPE



Price (€)

5,900,—

ROAN



Price (€)

7,800,—

PACKAGE LEOPARD – 14 DAYS

On request – permit needed. On availability of tag & approved by MET; incl. transfer, costs of hunt & accommodation, 12 days hunt, hunt guidance 1:1

	Price (€)
Trophy fee at booking	10,000,–
Trophy fee Leopard	8,500,–
Bait – Plains game	According to list
Permit Leopard (non-refundable)	550,–





RECOMMENDED EQUIPMENT



Clothing:

2 Pairs robust, tear proof cotton pants

1 Pair of shorts

1 Light sweater/jumper

T-Shirts

Underwear

Socks

Swim wear

Hats, gloves, scarves

Rain gear (foldable)

Fleece jacket

Windbreaker or similar

Belt, suspenders

Vest

Reserve shoelaces

Jogging suit/pajama

Slippers

Shoes

Gaiters

Lightweight, broken-in mountain or hiking boots

Travel Documents:

Valid passport (as required visa)
Air Tickets
Firearm certificate / European firearm pass, hunting license
Travel insurance copy
Important phone numbers (doctor, insurance, emergency contact etc.)

Hunting gear:

Rifle, ammo, lockable gun case, scope
Binoculars, spotting scope
Cleaning-set
Hunting knife
Small hunting-backpack
Pocket-/headlamp

Medicines / personal care:

First aid kit, personal medicines
Personal toiletries
Nail scissors, nail file
Lib balm
Sunscreen
Insect repellent

Other matters:

Glasses/contact lense, extra glasses, sunglasses
Sewing kit
Adapter for power sockets
Travel alarm clock
Camera, video camera
Batteries, spare batteries, chargers
Lighter
Writing material
Plastic bags
Earplugs
Books, reading material
Handkerchiefs, towelettes

SIGHTSEEING TOUR



DAILY RATE PER PERSON

Price (€)

Incl. Guide

Accommodation with full board

480,–

Toyota double cab or VW kombi

TOUR 1

Price (€)/person

**Etosha National park & West Coast Tour – 4 day/3 night from/to Sney Rivier Lodge
(at least 2 pers.)**

DAY 01

Departure from Sney Rivier Lodge – Etosha Nationalpark – Okaukuejo Camp
see also www.etoshanationalpark.org/de/unterkunft/okaukuejo overnight stay

DAY 02

Trough Etosha Nationalpark and then South West to Twyfelfontein, Damaraland
and Bushman Engravings (World Cultural Heritage site), overnight stay

1,920,–

DAY 03

Drive to Cape Cross – Seal Colony – down to the West Coast to Swakopmund,
Skeleton Coast – www.capecross.org, overnight stay

DAY 04

Swakopmund morning and lunch and then back to Sney Rivier Lodge

TOUR 2	Price (€)/person
Desert and Sea Tour – 4 day/3 night from/to Sney Rivier Lodge (at least 2 pers.)	
DAY 01 Departure from Sney Rivier Lodge – drive to Namib Desert, Soussusvlei Lodge – 2 nights www.soussusvleilodge.com	
DAY 02 Soussusvleilodge and Desert Dunes Tour – Namib Desert, overnight stay	1,920,–
DAY 03 Soussusvlei – and then South West Coast to Swakopmund, Skeleton Coast – www.capecross.org , overnight stay	
DAY 04 Swakopmund morning and lunch and then back to Sney Rivier Lodge	
TOUR 3	Price (€)/person
Combined Tour – Etosha Nationalpark/Desert and West Coast Tour 7 day/6 night from/to Sney Rivier Lodge (at least 2 pers.)	
DAY 01 Departure from Sney Rivier Lodge – Etosha Nationalpark – Okaukuejo Camp see also www.etoshanationalpark.org/de/unterkunft/okaukuejo overnight stay	
DAY 02 Trough Etosha Nationalpark and then South West to Twyfelfontein, Damaraland and Bushman Engravings (World Cultural Heritage), overnight stay	
DAY 03 Drive to Cape Cross – Seal Colony – down to the West Coast to Swakopmund, Skeleton Coast – www.capecross.org , overnight stay	3,360,–
DAY 04 Swakopmund/Walvis Bay area and Jetty lunch	
DAY 05 Swakopmund – drive to Namib Desert, Soussusvlei Lodge – 2 nights, www.soussusvleilodge.com	
DAY 06 Soussusvlei and Desert Dunes Tour, Namib Desert	
DAY 07 Soussusvlei and back to Sney Rivier Lodge	

NOTES



Blaser Safaris GmbH

Europastraße 1/1, A-7540 Güssing | Österreich/Austria
AT +43 (0) 33 22 – 4296320 | DE +49 (0) 7562 – 9145414
www.blaser-safaris.com | info@blaser-safaris.com

Photo: Free Vector Maps, Adobe Stock/Fotolia, iStock, Pixabay