

# NEW ZEALAND 2025



STALKING  
RAISED HIDES

**Blaser**  
s a f a r i s





Trophy hunting in the Southern Alps of New Zealand with professional guides will give you a challenging hunting experience for some of the world's most majestic game animals.

## CONTENT

Experience New Zealand .....	4
Traveling and accommodation .....	6
Lodges .....	7
General hunting information.....	8
Package Prices .....	9
Custom packages.....	10
VENATOR USA.....	13
Recommended equipment .....	14
More Activities .....	16



## EXPERIENCE NEW ZEALAND

Hunting in New Zealand with our Partner Venator Cardrona Safaris. Established by the Fraser family in the 1980s, Venator specializes in two of New Zealand's strongest activities – tourism and agriculture – with a focus on creating a premium experience unavailable anywhere else.

From the unmistakable beauty of the South Island surrounds and the majestic animals roaming the habitat, to the luxury of the lodges serving the finest New Zealand cuisine, they specialize in creating moments that will take your breath away.

Down here, you will be on top of the world ...

The south of New Zealand is widely recognized for its incredibly diverse and unique landscapes. Here, the big red stags are hunted in managed areas, and at Venator Cardrona Safaris, we ensure this territory is in their natural habitat.

The hunting preserve is in undulating backcountry, covered in native vegetation. There is excellent cover and plenty of draws and gullies. The environment delivers all the excitement of hunting in raw, untamed terrain, without compromising on accessibility – you can travel in on foot, drive in via 4WD, or be flown in.

Trophy hunting in the Southern Alps of New Zealand with our Cardrona Safaris professional guides will give you a challenging hunting experience for some of the world's most majestic game animals. Enjoy the satisfaction of a successful alpine hunting adventure set in spectacularly scenic terrain on Cardrona Safaris prestigious and unique trophy hunting preserve.



# TRAVELING AND ACCOMMODATION



## TRAVELING TO NEW ZEALAND:

There are daily flights from most major European airports to New Zealand. Your final Airport should be Queenstown. Please note the strict entry requirements for New Zealand.

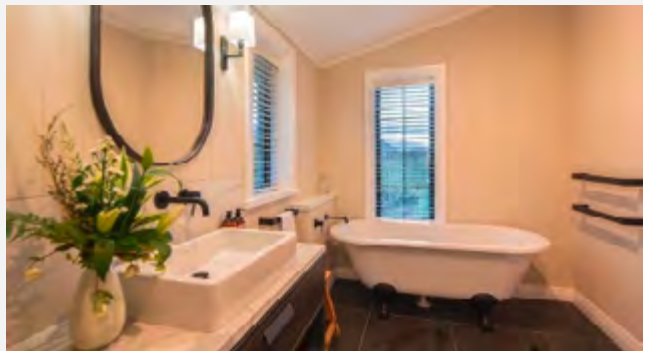
## ACCOMMODATION:

Located in the most popular tourist area in New Zealand, which offers the best hunting and tourism combination on the country. The small resort town of Wanaka is ideal for non-hunters and only a 10-minute drive from our hunting area.

Our partner personally own and lease New Zealand best quality game estate and have three stunning lodges available, providing a variety of accommodation options for your hunting group.



# LODGES



## BLACKFRIARS LODGE WANAKA

This 700 m<sup>2</sup>-eco-friendly lodge with stunning mountain views is located within a five-minute drive of the Wanaka township. With six king-size bedrooms, each containing a full ensuite bathroom. Three bedrooms on the upper level each have their own balcony, and three on the ground floor open onto the flagstone courtyard, which leads to the heated pool and sunbathing area.

# GENERAL HUNTING INFORMATION



## HUNTING TIME:

Hunting season begins in late February and continues until late August although summer hunts can also be arranged for certain species.

The 'rut' for stags in New Zealand is during March and April. These may vary in intensity depending on the temperatures. The alpine animals rut during May and June although they can be successfully hunted in their bachelor herds during other times of the year as well.

## HUNTING SEASON:

February (Summer)	Red Stag, Elk, Fallow, Chamois, Tahr, Fishing
March (Summer)	Red Stag, Elk, Fallow, Chamois, Tahr, Fishing
April (Autumn)	Red Stag, Elk, Fallow, Chamois, Tahr, Fishing
May/June (Autumn/Winter)	Red Stag, Elk, Fallow, Chamois, Tahr, Fishing, Waterfowl
July/August (Winter)	Red Stag, Elk, Fallow, Chamois, Tahr, Fishing, Waterfowl

## FIREARMS:

We recommend calibers between .270–.300 Win. Mag. Shooting distances will vary between 100–300 yards. Should you wish to bring your personal firearm to New Zealand we will assist you with the paperwork. We also have a range of high-end firearms available. We welcome bow hunters as well. We have a number of archery hunters every season.



## PACKAGE PRICES

### PACKAGE RED STAG (4 DAYS), 1-2 TROPHYS

---

		Price
Arrival: Sunday, Departure: Thursday	Hunt guidance 1:1	
400–450 SCI	USD 13.000,-	
451–500 SCI	USD 18.000,-	
501–550 SCI	USD 25.500,-	
551-600 SCI	USD 35.500,-	
550–600 SCI	USD 38.750,-	USD 37.500,-
601–650 SCI	USD 48,000	

---

Includes luxury lodge accommodation, airport transfers, hunt transportation, hunt guidance, meals, alcoholic and non alcoholic beverages, field preparation of trophies, trophy fee for Red Stag

---

### PACKAGE RED STAG (6 DAYS) – 3+ TROPHY

---

Arrival: Sunday, Departure: Saturday

Includes luxury lodge accommodation, airport transfers, hunt transportation during the hunt, hunt guidance, meals, alcoholic and non alcoholic beverages, field preparation of trophies, trophy fees for Red Stag, Tahr & Chamois

---

	Preis
400–450 SCO	USD 14.500,-
451 –500 SCI	USD 19.500,-
501-550 SCI	USD 27.000,-
551-600 SCI	USD 37.000,-
601-650 SCI	USD 49.500,-

# CUSTOM PACKAGES

## HUNT DURATION AND HUNTING COMBINATION

<b>Spezies</b>	<b>Suggested hunt duration</b>
1–2 species	5 days
3–4 species	7 days

## DAILY RATE FROM MARCH–AUGUST

<b>Hunter / Hunt guidance 1:1 / day</b>	<b>Per accompanying person / day</b>
USD 750,–	USD 250,–

## ADDITIONAL COSTS

	<b>Price (USD)</b>
Flights – we are happy to organize your flights to New Zealand	On request
Travel insurance	On request
Necessary helicopter flights during the hunt	2,500,– to 3,500,–
Trophy transport and shipment	On request
Touring Day (full day)	700 -
Touring Day (half day)	350
Organization fee per hunter	300,–
Organization fee per accompanying person	150,–
Gratuities – the usual gratuities run between 5-10 % of the total hunt value with it being split 2/3 to the guide and 1/3 to the lodge staff.	

## TROPHY FEES

### RED STAG



	Price (USD)
400–450 SCI	10,000,–
451–500 SCI	15,000,–
501–550 SCI	22,500,–
551–600 SCI	32,500,–
600 + SCI	45,000,–
700 + SCI	On Request

### WAPITI / ELK



	Price (USD)
up to 400 SCI	12,000,–
401–420 SCI	16,000,–
421–440 SCI	20,000,–
441–460 SCI	25,000,–
461–480 SCI	30,000,–
481–500 SCI	40,000,–
501 + SCI	On Request

### HIMALAYAN TAHR



	Price (USD)
Himalayan Tahr	6,000,–
On Tahr hunts, depending on your physical ability we suggest the use of a helicopter to access our higher hunting areas in the Alps. If you choose this option additional costs app.	approx. 2,500–3,500,–

### CHAMOIS



	Price (USD)
Chamois	5,000,–
On Chamois hunts, depending on your physical ability we suggest the use of a helicopter to access our higher hunting areas in the Alps. If you choose this option additional costs app.	ca. 2,500–3,500,–

## FALLOW BUCK

---



	Price (USD)
Gold	5,000,-
Silver	2,500,-

## RAM

---



	Price (USD)
Ram	1,250,-

## GOAT

---



	Price (USD)
Goat	1,250,-

## FISHING

---



	Price (USD)
Fly Fishing / Lake Fishing	1,000,-/day
Deep Sea Fishing	On request

# VENATOR USA

Just 1.5hrs outside of Oklahoma City, or 2.5hrs from Dallas, our 6500 acre hunting block consisting of sprawling gullies, hardwood draws and rivers provide ample cover. Here giant elk and red deer roam free in a natural and untamed wilderness. The prime hunting window for these majestic species typically spans from September to November, aligning with the respective rutting seasons.

## DAILY RATES

	Price (USD)
Hunter / Hunt guidance 1:1 / Day	500,-*
Non-Hunter	250,-/Day*

\*All prices shown are in USD\$

**INCLUSIONS:** Luxury lodge accommodation, inclusive of meals, refreshments and alcoholic beverages. All prices are in US dollars.

## TROPHY FEES

### RED STAG



SCI SCORE	Price (USD)
601+	50,000,-
551-600	40,000,-
501-550	30,000,-
451-500	22,500,-
400-450	15,000,-

### ELK



SCI SCORE	Price (USD)
501+	50,000,-
481-500	40,000,-
461-480	30,000,-
441-460	25,000,-
412-440	20,000,-
400-420	15,000,-

# RECOMMENDED EQUIPMENT

New Zealand weather patterns are very unpredictable, and are constantly changing from day to day and even hour to hour. It can rain or snow at anytime of the year. Even if your hunt is planned for late summer or early autumn (March/April), we recommend you bring one full set of warm hunting clothes, including some type of insulated underwear. We also suggest that for a Feb/March trip, you bring a set of lightweight (summer) clothes.

A warm, winter layer should be packed for June, July and August hunts. After saying this, our weather is usually very mild and we do not experience the extreme cold temperatures like those encountered throughout North America. The best way to dress is in layers, and to avoid the heavy and bulky items.

## Suggested hunting gear list

---

1× or 2× pair hunting trousers – light / medium weight

---

2× shirts – one light and one medium weight

---

3× pair of woolen socks

---

2× silk or poly material base layer jerseys

---

2× pair of base layer shorts

---

1× set of insulating underwear – preferably wool or poly

---

1× light weight jacket

---

1× warm hunting jacket

---

1× set of high quality lightweight/breathable raingear – jacket and pants

---

2× pair of gloves – 1 lightweight or leather, the other waterproof

---

1× warm or insulated hat or cap

---

Well broken in boots – CLEAN a good support boot (Meindl/Kenetrek/Lowa style)

**Hunting Boots MUST be CLEAN to enter New Zealand due to strict agricultural laws. Remove any dirt throughout before travelling/packing.**

---

Binoculars (preferably 8 or 10 power, the guides are outfitted with excellent spotting scopes)

---

Rangefinder

---

Small day pack

---

Lightweight flashlight and / or head lamp

---

Camera – digital cards, with your 110/220v charger

---

Sunglasses

---

Rifle with at least 40 rounds of ammunition, preferably the one you shot very well

---

## Papers

---

Passport or Identity Card

---

Itinerary and airline tickets

---

Personal check, us cash or credit card (Visa & Mastercard only + 3.5 % fee)

---

Name and full address details of your taxidermist and your customs broker

---

Visa or Mastercard

If you are planning to use your Visa/MasterCard in New Zealand, it is recommended to call your credit card company prior to leaving and let them know to expect charges to come through from New Zealand.

---

Completed firearms permit for new zealand police

If your baggage is missing upon arrival at International Airport it is CRITICAL that you still take the permit and clear your firearms with the police so that your firearms may be forward on to Cardrona Safaris.

To reduce processing time at Airport please fax a completed out form one week IN ADVANCE to New Zealand police. Fax number: 011 64 9 256 0486.

If you have, any problems just forward the form to us and we can fax it for you. Bring the original copy with you to New Zealand.

---

Minimum NZ\$60,- New Zealand Currency

NZ\$ 25,- firearms permit. US dollars may be exchanged at your bank or on arrival at Auckland International Airport at a Travelex store.

---

Driver's License – If hiring a car within New Zealand

---

## NOTE:

As per personal items – it is recommended that you bring at least 2 times the required stay days for prescriptions and daily-required medicines for the duration of your trip to New Zealand. These should also NOT be packed in your luggage, but taken as carry-on to avoid lost baggage delays. In addition, it is a good idea to bring an extra – pair of glasses, contacts and daily cleaner, and other 'essential' items for your trip. Also, consider sunscreen, allergy medicine, and any other type of 'seasonal' item, which you may require during your trip.

Also a point to remember, you will be hunting from a lodge and the staff will wash and dry your clothes overnight if necessary. Pay extra attention to your airline baggage allowances and limitations. Excess baggage charges are very costly and are not needed on your New Zealand trip.

Also, hair dryers, irons, and 220 Volt/110 Volt power converters are available at the lodge. If your charging equipment reads 110 Volt–220 Volt & 50–60 Hz on the UL label, you will only need a plug adapter to use your charging equipment in New Zealand (other than at our lodge).

If bringing your cell phone, Blackberry/iPhone etc. with you to New Zealand, make sure that you call your service provider prior to leaving to make sure you have it set up for international roaming. We have both GSM & CDMA cell networks in NZ (Vodafone & Spark). Our lodges have full complimentary Wi-Fi service.

# MORE ACTIVITIES

## SIGHTSEEING & EXCELLENT OPPORTUNITIES FOR A WIDE RANGE OF ACTIVITIES:

- Milfod Sound tours
- Whale watching
- Jetboating
- Bungy jumping
- Helicopter Scenic tours
- Winery tours and tastings
- Visit Mt. Cook (New Zealands highest mountain)
- Fishing (lakes, rivers and ocean)
- Diving
- Skiing and snowboarding
- Countless shopping destinations
- Penguin viewing
- Tranz/Alpine Train sightseeing
- High-country farming experience (horse trekking, sheep shearing)
- Otago Central Rail Trail (cycling)
- Fine cuisine
- Golf
- Mountain biking
- Franz Josef and Fox Glaciers
- Kiwi spotting on Stewart Island
- New Zealand' "Great Walks"







**Blaser Safaris GmbH**

Europastraße 1/1, A-7540 Güssing | Österreich/Austria  
AT +43 (0) 33 22 – 4296320 | DE +49 (0) 7562 – 9145414  
[www.blaser-safaris.com](http://www.blaser-safaris.com) | [info@blaser-safaris.com](mailto:info@blaser-safaris.com)

Photo: Free Vector Maps, iStock, Adobe Stock/Fotolia, Marek, Shutterstock, Pixabay