

**Blaser**

*Sney Rivier*  
LODGE



NAMIBIA

**Blaser**  
safaris





THE *Lodge*  
PAGES 4 –21

THE *Hunt*  
PAGES 22 –33

THE *Wildlife*  
PAGES 34 –45

THE *Reserve*  
PAGES 46 –55

# SNEY RIVIER



# Lodge



AMBIANCE THAT

# *enchants*



Nestled in the heart of the Namibian bush, the luxurious Sney Rivier Lodge is your gateway to an unforgettable adventure. Reconstructed in 2009, the lodge was designed to blend exclusivity with thrilling hunting adventures in the wild. Set against the stunning backdrop of the Khomas Hochland, Sney Rivier Lodge showcases a distinctive ambiance where the architecture and interior decor harmoniously merge nature and the spirit of hunting. The boundaries between inside and outside are fluid. An incredible travel destination – perfect for more than just hunters.



AN OASIS OF

# Tranquility

The lodge offers soul-nourishing spots throughout. Discover inviting nooks where you can unwind and soak in the serene ambiance while sipping a refreshing drink. The blend of chic furnishings and natural architecture forms a true oasis of comfort and bliss.





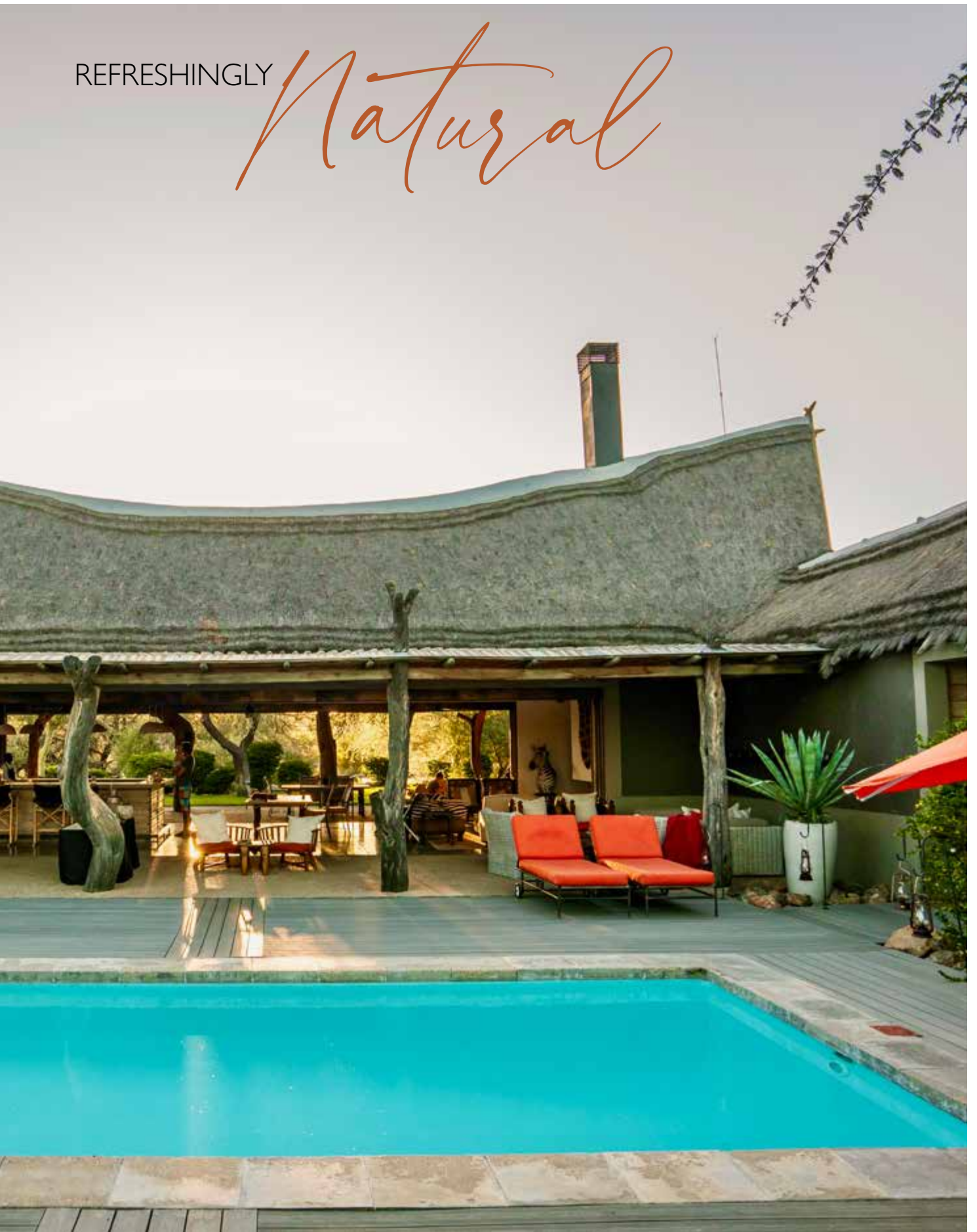




Whether you're coming back from a hunting trip or simply seeking a day of relaxation, the team at Sney Rivier Lodge is dedicated to ensuring your stay is enjoyable.



REFRESHINGLY *Natural*



ENJOY YOUR

# Privacy

Your exclusive, beautifully designed chalet features a private splash pool, making it the perfect sanctuary for daytime relaxation and tranquility. Crafted with natural materials, it offers unmatched comfort in both its interior and exterior spaces.





BEAUTIFUL

# Views

At the lodge, a vibrant watering hole draws a diverse array of wildlife, providing around-the-clock viewing opportunities. You can unwind in your chalet while taking in the lively scenes unfolding around the water.





*Amazing*

AT ANY TIME OF  
THE DAY





Whether you're gathered around the campfire in the evening or enjoying the early morning on your chalet's terrace, the breathtaking beauty of Namibian nature will leave you with unforgettable memories.



# LUXURIOUS SPA

## *treat yourself*

Enjoy the calming and relaxing effects of massages and aromatherapy treatments. Indulge yourself in a visit to this sanctuary of wellness and experience the tranquility of our luxurious spa room.





INDULGE IN CULINARY DELIGHTS

# delectable



The lodge offers an exquisite culinary experience that marries local flavours with gourmet techniques. Each dish is crafted with the finest seasonal ingredients sourced from the reserve and local areas. Guests will indulge in a memorable gastronomic journey, that elevates the stay and compliments the personalised service of the lodge.







THE *Hunt*



DAILY

# Adventures

Hunting and activities are done on our stunning 45 000 ha reserve, a tranquil haven where vibrant ecosystems thrive in harmony. The large hunting area guarantees an adventure. From exciting stalking to sitting on one of the countless rocky hills glassing for your next challenge, there is never a dull moment. Vehicles are used exclusively for driving to the areas you will be hunting in for the day, or for retrieving game. This way you can experience hunting in its most authentic form.





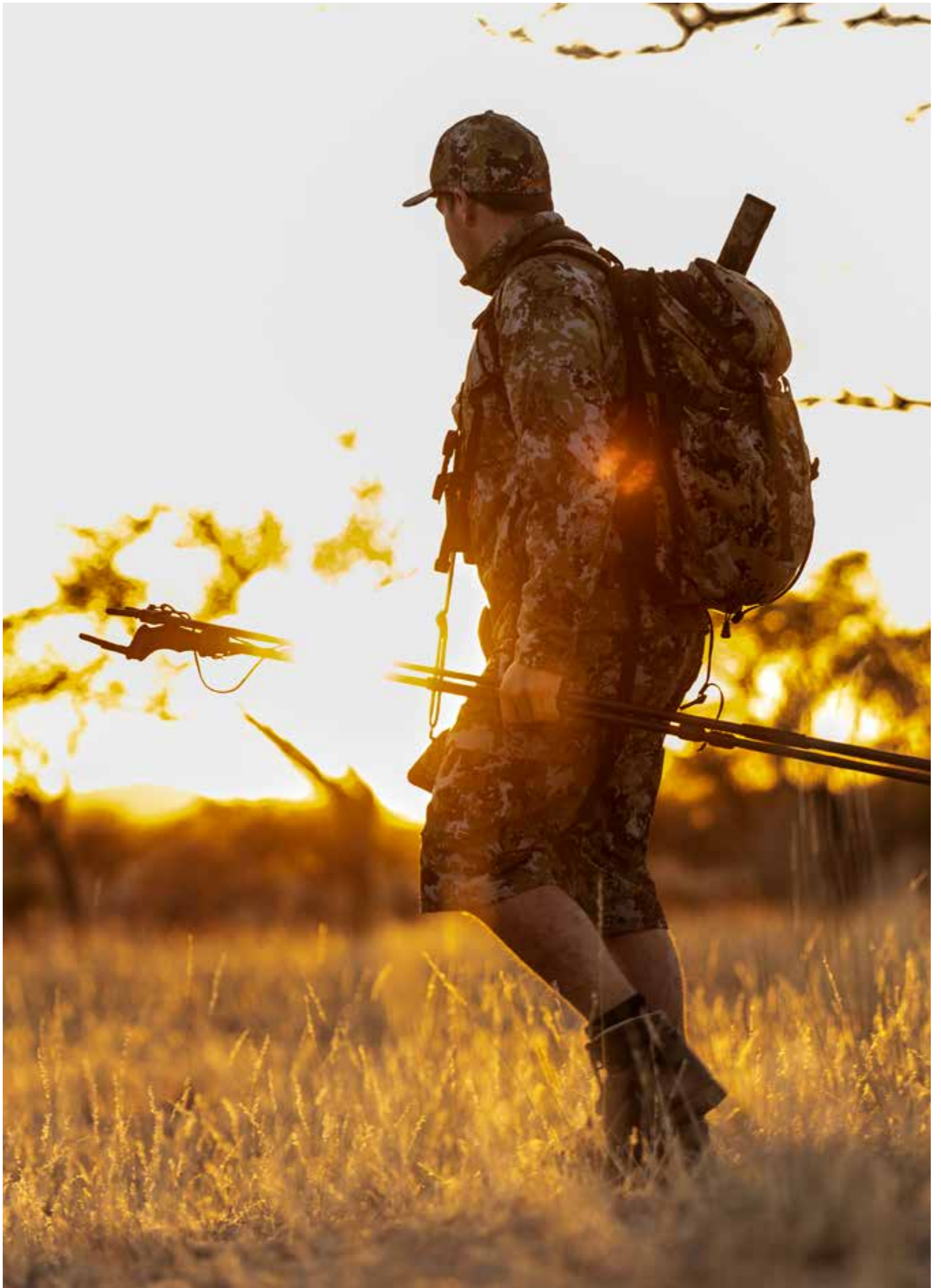


EXPERIENCED

# *guides*

Our hunting guides and trackers are dedicated to ensuring your success as a hunter. With their extensive knowledge of the local flora and fauna, they can introduce you to the unique wonders of Namibia's natural environment. The primary goal of the hunt is to track Oryx, Mountain Zebra, Springbok, Blue Wildebeest, Black Wildebeest, Kudu, and Eland. Additionally, hunters can pursue Sable, Roan, Impala, Waterbuck, Leopard, Cheetah, Klipspringer, and the unique Damara Dik-Dik.







# STALKING WITH *Success*

Our experienced professional hunters are intimately familiar with the hunting area and can identify the best opportunities to fulfill your wishes. Additionally, our professionally equipped shooting range offers the capability to shoot at distances of up to 400 meters. If needed, we have the latest in Blaser rifles and shotguns which are available for rent at the lodge.



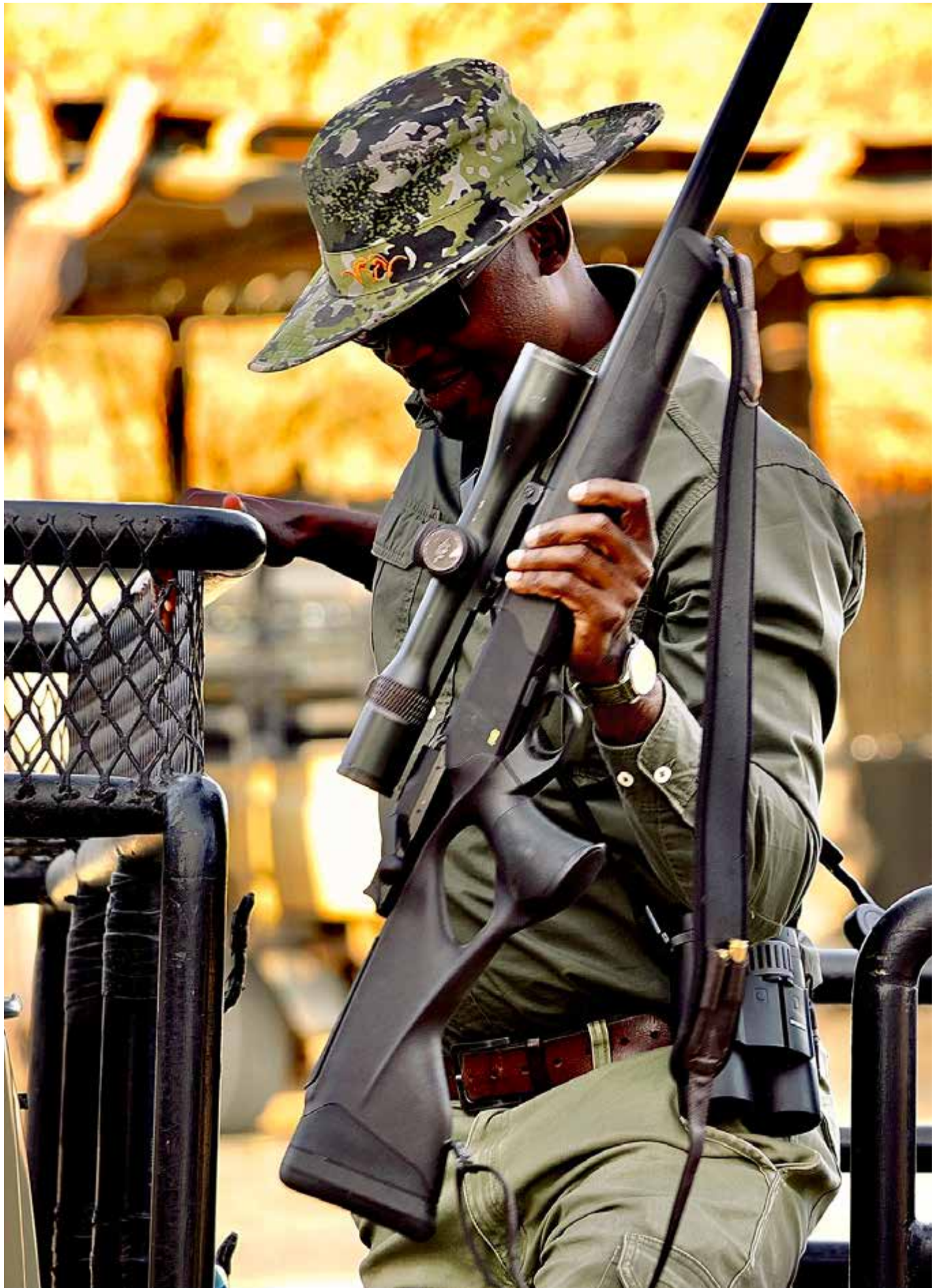
SUPERIOR

# Equipment



Looking to kick off your trip with minimal luggage? No worries! At the Sney Rivier Lodge, you'll have access to modern hunting weapons, top-notch optics, and a variety of other practical items available for rent.







RANGE *fun*



Test shooting is a requirement prior to the hunt. If you opt for a rental weapon, it's crucial to become well-acquainted with the rifle to ensure a successful hunting experience. Shotgun shooters will also find plenty to enjoy if they choose. Our lodge features a specially designed clay range that offers a diverse and engaging challenge.







THE

# Wildlife







Oryx



Eland

SPECIES-

# Diverse

The reserve is on the edge of the Khoma's Hochland, and is marked by hilly and partially mountainous terrain, large dry river beds and open plains, showcasing the captivating beauty of the Namibian bush. Renowned for its rich wildlife, the region is especially noted for its impressive trophies.



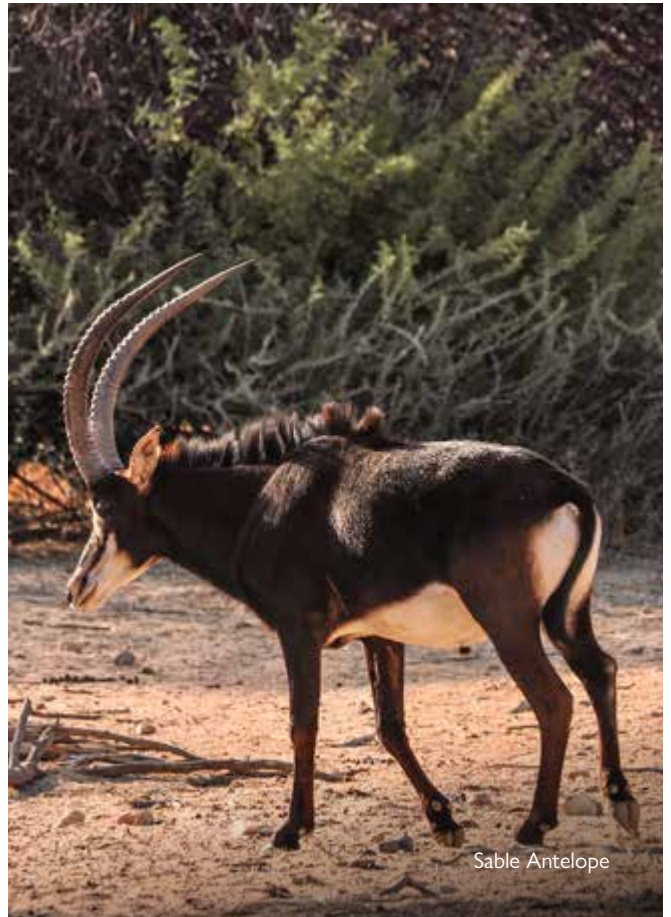
Waterbuck



Springbuck



Steenbuck



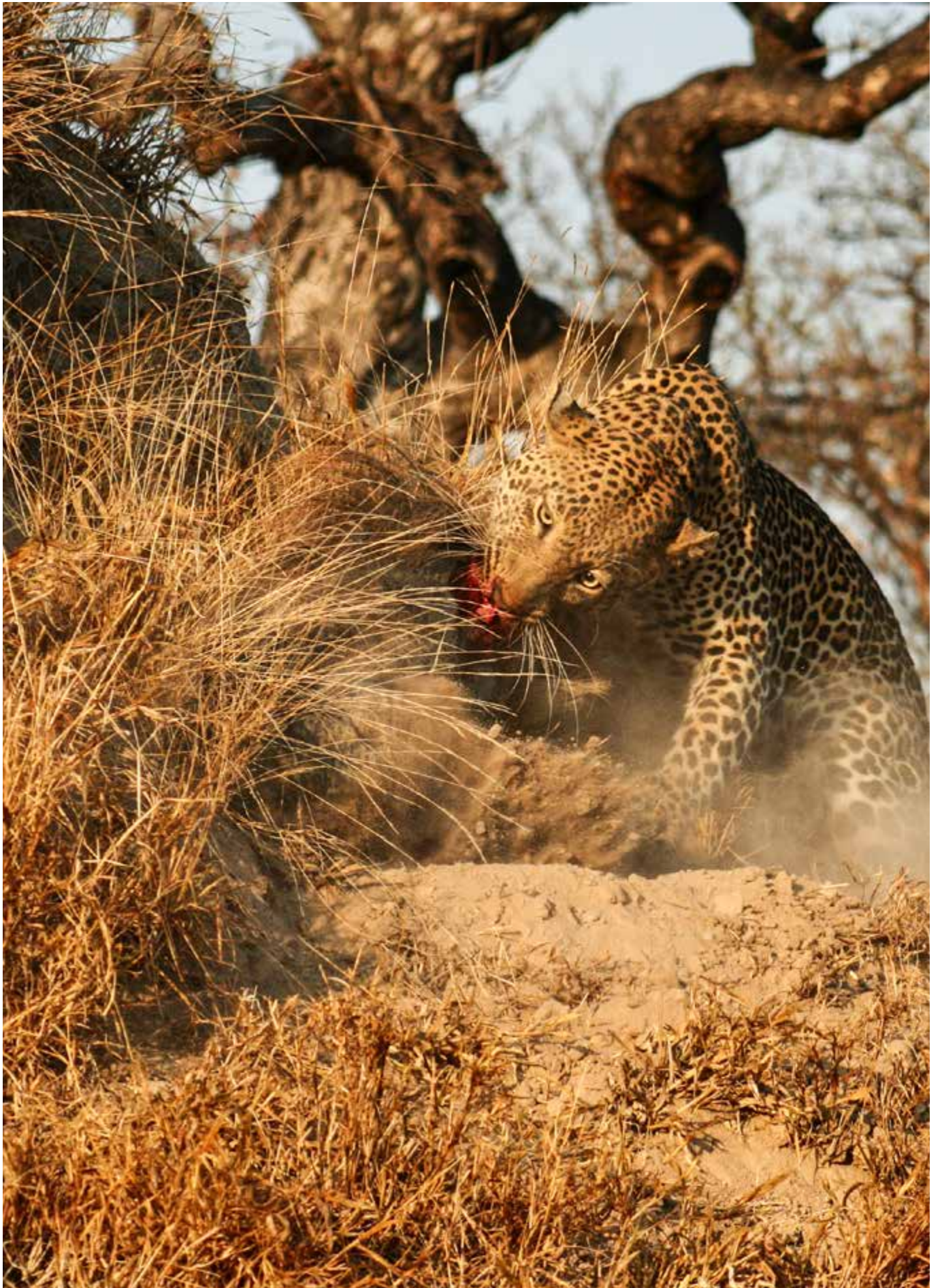
Sable Antelope

# Hunters AND PREY



Due to its rich population of wildlife, the Sney Rivier Lodge reserve has become a popular hunting ground for leopards and other predators. While they are incredibly stealthy, you might just catch a glimpse of them if you're fortunate during your hunt.







Kudu





A WORLD OF

*Gazelle  
species*



Springbok

RARE

# Species

We take great pride in our rhinos! We spend a lot of time and effort in supporting their conservation through our dedicated protection program. Sable Antelope and Roan Antelope are also a rare specie we have, through a dedicated management programme, the herds have increased to, a now, thriving population.



White Rhino



Sable Antelope



Roan Antelope

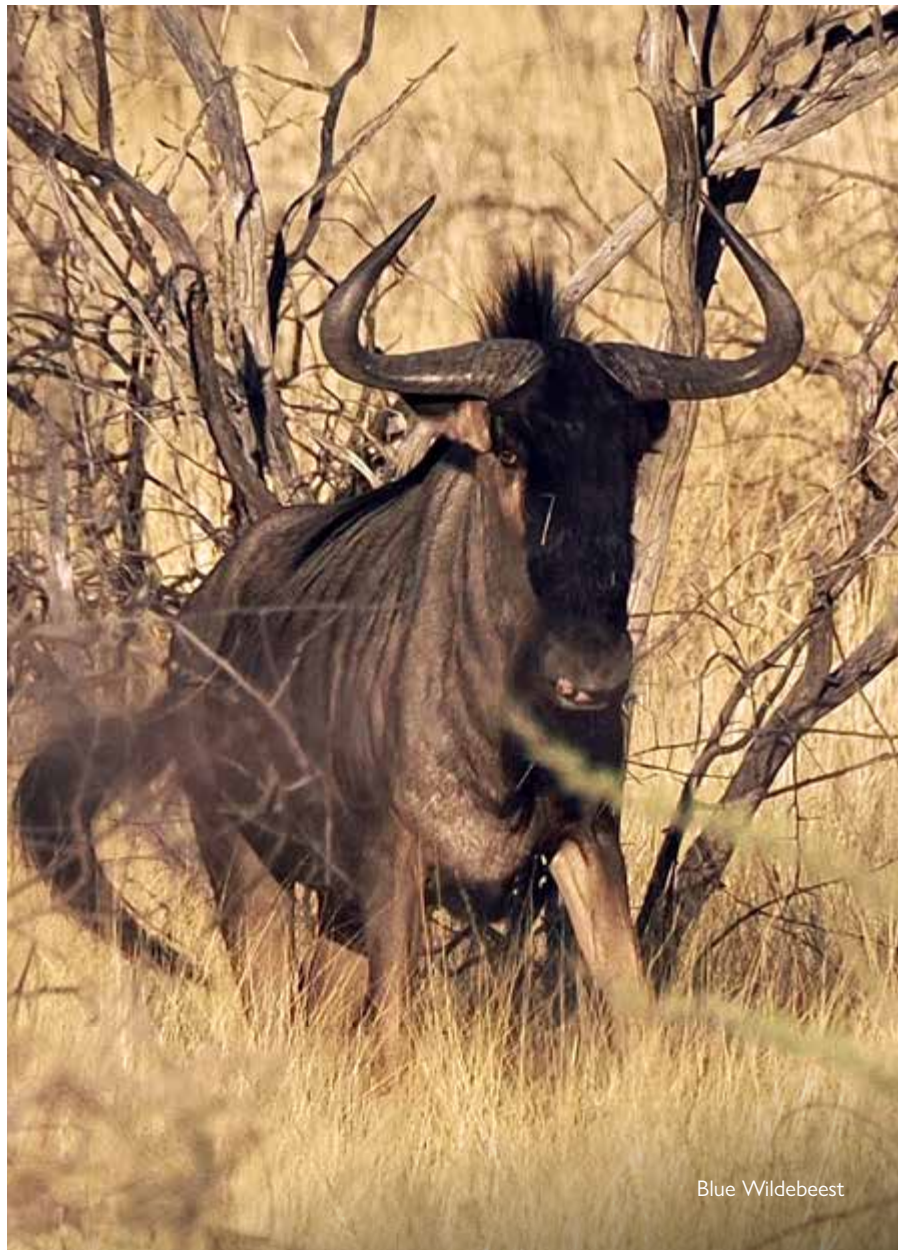
FASCINATING

# Animal Kingdom





Hartmann's Zebra



Blue Wildebeest



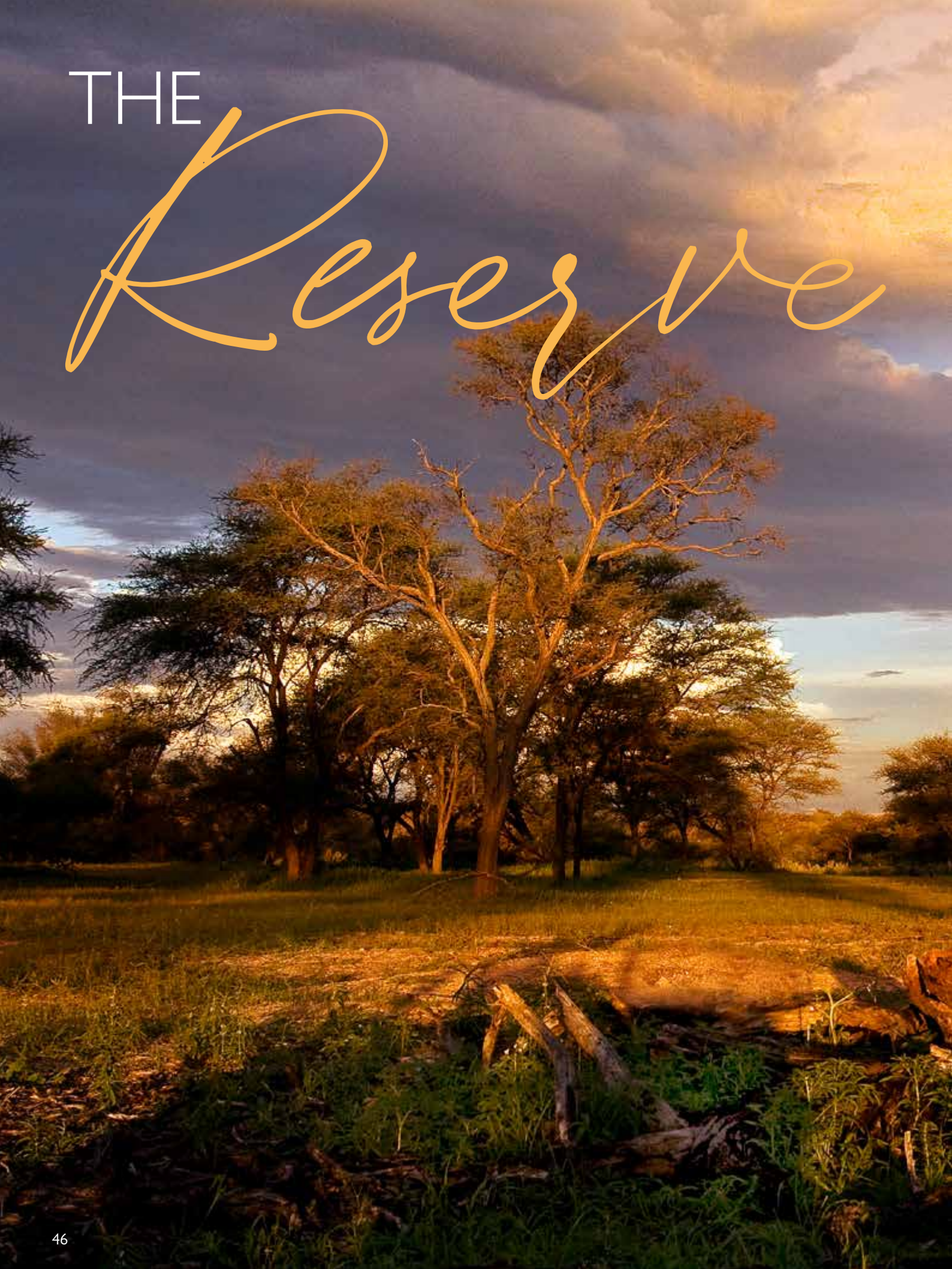
Black Wildebeest



Warthog

THE

# Reserve





# ENDLESS *Landscapes*



Namibia is over twice the size of Germany, and its vast expanses and diverse landscapes leave a lasting impression on visitors. With its sparse population and largely untouched nature, the country offers a unique experience. Located just a two-hour drive northwest of Windhoek, Sney Rivier Lodge is the perfect retreat. In the Afrikaans language, "Rivier" translates to "river bed," but due to Namibia's scarce rainfall, these riverbeds are typically dry. When the much-anticipated rains arrive, usually between February and April, the landscape transforms into a vibrant sea of greenery.







# Big CREATURES

Herds of impressive giraffe roam the surroundings in their rocking motion. Ostriches are also a common sight in the Namibian landscape.

The Camel Thorn and Blue Cobas trees are also characteristic of Namibia. The Camel Thorn stands tall in the dry river beds while the Cobas grows through the rocks. They are ideally adapted to life in dry regions. There are other amazing plant life in our arid environment.





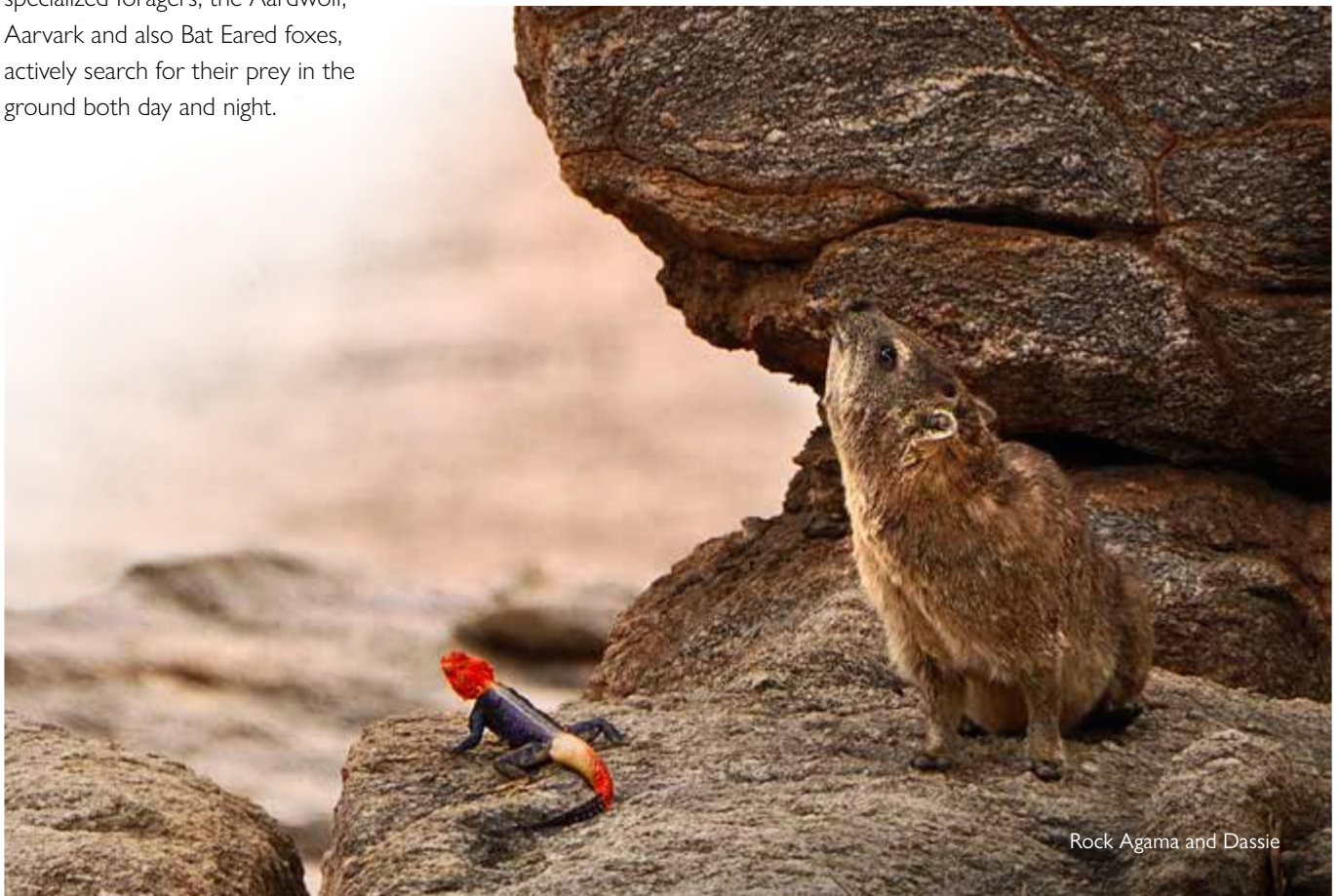
# Small

## CREATURES

If you've ever observed a weaver bird crafting its nest, you can't help but marvel at these tiny architects. How is it that such intricate designs can reside in such a small mind? And how can they weave so skillfully when their only tool is their beak?

Rock Hyraxes or Dassies inhabit the rocky outcrops in large colonies and the colourful Namibian Rock Agamas can be seen moving around looking for insects.

Did you know that we have different animals that primarily feed on specific types of termites and insects? These specialized foragers, the Aardwolf, Aarvark and also Bat Eared foxes, actively search for their prey in the ground both day and night.



Rock Agama and Dassie



Aardwolf



Aardvark



Bat Eared Fox



A WARM  
*welcome*



Whether you're traveling solo or with your family, Sney Rivier Lodge is the perfect destination that caters to your highest expectations. We don't just provide airport pickups from Windhoek; we are also delighted to arrange special excursions for you, such as trips to Swakopmund or Etosha National Park. We eagerly await your visit!



Further information and bookings:

**Blaser Safaris (PTY) Ltd**  
P O Box 511  
Okahandja, 12004  
Namibia

Telephone: +264 (0) 81 675 3320  
email: [namibia@blaser-safaris.com](mailto:namibia@blaser-safaris.com)  
IG: @blasersafaris

**Blaser Safaris GmbH:**  
Europastraße 1/1  
7540 Güssing  
Austria

Telephone: +43 (0) 3322 / 42963

Web: [www.blaser-safaris.com](http://www.blaser-safaris.com)  
E-Mail: [info@blaser-safaris.com](mailto:info@blaser-safaris.com)