

SOUTH AFRICA
LIMPOPO &
MURCHISON PRIVATE
NATURE RESERVE
2023



STALKING

Blaser
s a f a r i s





Safaris can be conducted throughout the year; however the best time for a safari is between April & October. Some 40 different species of game can be hunted across the country, but each safari is individually planned to give you maximum enjoyment & satisfaction. The safari is suitable for the whole family, including non-hunters; there are a variety of interesting, photographic tours.

CONTENT

General travel information.....	4
Hunting area Limpopo.....	6
Hunting area Murchison	
Private Nature Reserve	18
Recommended equipment	22
Notes.....	23

GENERAL TRAVEL INFORMATION



CURRENCY

1 Rand (R) = 100 Cent (c)



TIME DIFFERENCE

CET +1 h



ELECTRICITY

220 Volt/50 hertz alternating current, three-pin plug sockets (adapter required)



ENTRY REQUIREMENTS

Please note the entry rules for each country. You can obtain this information from the relevant consulate. If you are a visa, please note that you are responsible for obtaining the visa yourself.



CLIMATE

The geographical and climate conditions in the country generally do not require a different way of life. The climate is generally very pleasant and mild. The seasons are offset by 6 months compared to Europe: Winter happens during European summer and vice versa.

Due to its size and the different landscapes, South Africa has a variety of different climate zones (subtropical to Mediterranean climate, but the evenings and nights can be very cold in the winter months).

Summer rain from October to April in the northern and eastern parts of the country; rain also in winter on the south coast. The temperatures at higher elevations (Johannesburg and Drakensberg) can drop below freezing in winter.



INSURANCE

Taking out travel insurance in case you fall ill or require ambulance services is strongly advised.



HEALTH

Larger cities in South Africa have (private) hospitals and doctors meeting the highest international standards, but also charging correspondingly high fees. If medical treatment is sought, payment has to be made directly on site (in hospitals usually by paying a deposit before admission).

Vaccinations

Please check the vaccination rules for each country. This information is provided by the relevant institute for tropical medicine. If vaccinations are required, please note that you are personally responsible for complying with the rules.

No vaccinations are required on entry, except when entering from an area where yellow fever is present. However, apart from the basic vaccinations for all travelers (diphtheria/tetanus/polio, hepatitis A & B, typhoid), the Center for Travel Health recommends that independent tourists and those planning an extended stay have a preventive vaccination against rabies.

Please note the changes in vaccination requirements for travelers via Johannesburg, South Africa on outbound and especially on inbound flights (in force since 6/6/2011):

According to South African law, all travelers from the following countries **MUST** be vaccinated against yellow fever: Angola, Benin, Burkina Faso, Burundi, Central African Republic, Cameroon, Chad, Republic of the Congo, Cote d'Ivoire, Democratic Republic of the Congo, Ethiopia, Gabon, Gambia, Ghana, Kenya, Mali, Niger, Nigeria, Rwanda, Senegal, Sierra Leone, Somalia, Sudan, Togo, Uganda, Tanzania, Zambia.

Because of the current development mentioned above, we recommend (it is not currently law, but you should take it into consideration) that travelers have yellow fever vaccinations for visiting the following countries in southern Africa: Mozambique, Zimbabwe, Botswana

Malaria prophylaxis (in particular the use of good insect repellents on skin and clothing) is expressly recommended for the Kruger National Park, the northern KwaZulu-Natal and the neighboring regions around St. Lucia as well as parts of Mpumalanga and the Northern Province, in particular during the humid summer months (November to March). For trips to KwaZulu-Natal, special care should be taken regarding hygiene and only bottled water should be consumed due to the risk of a cholera infection. Tuberculosis is also relatively widespread in South Africa and cases keep increasing. A TB vaccination is therefore recommended, especially for children.

Caution

Following standard hygiene measures, such as frequent hand washing, is generally sufficient. In towns and areas with fewer tourists, take care when consuming raw fruit and salads. The tap water is usually drinkable, but care is still advised. Schistosomes (bilharzia), a parasite occurring mainly in stagnant water, is present in all southern African bodies of water – appropriate care must be taken.

During the humid season in particular, ticks are prevalent and cause tick bite fever. While not life-threatening, it causes high fever and severe weakness and requires an extended convalescence period. Taking a travel medical kit containing your regular medication plus medication for common travel-related illnesses is recommended.

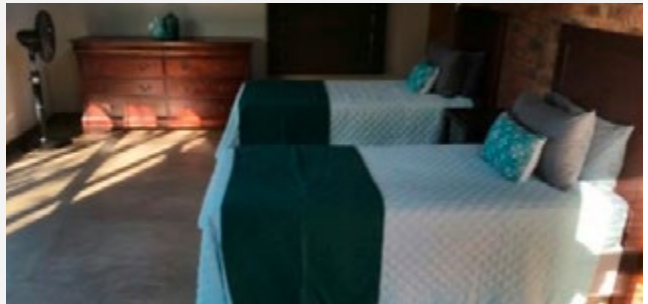
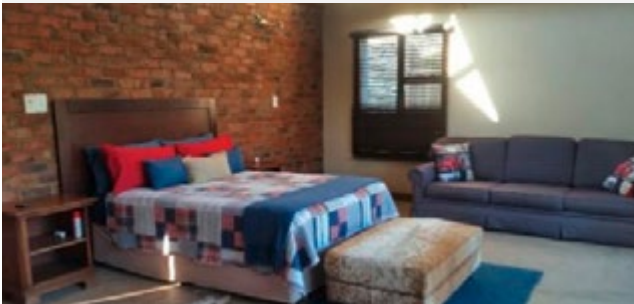
HUNTING AREA LIMPOPO

The area of our partner Wayne Wagner Safaris is located in Hoedspruit Limpopo Province and is situated between Phalaborwa, Gravelotte and Mica on the Olifants River.

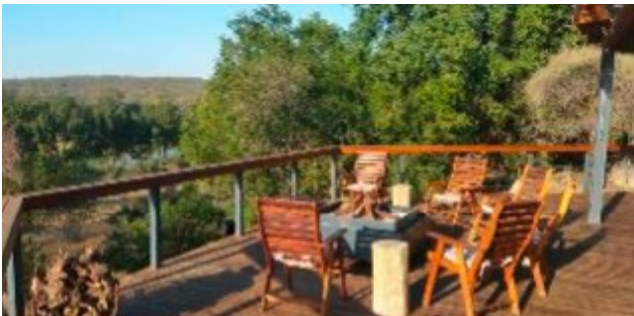


ACCOMMODATION

To be sure that the safari meets with your specific requirements a questionnaire will be completed before your arrival with your personal details, species to be hunted, food preferences and accommodation requirements. Both Lodges have wifi.



INYOKA LODGE



EXCELLENCE LODGE

For smaller parties we use also the Excellence Lodge.

HUNTING PACKAGE

PACKAGE PLAINS GAME & BUFFALO (BULL) – 7 DAYS

The following package consists of 1 mature, hard bossed buffalo bull & 6 days of hunting - you must plan on arriving one day prior to commencement of the safari. The hunt will take place on large farms in the bushveld region of the Limpopo Province near the town of Hoedspruit. The hunting is in reasonably thick bush with the average shots being less than 100 meters.

The daily rates & costs of the safari are as follows	Price (€)
6x Hunting days à € 390,- / person / day	2,340,-
1x Tag (½ day arrival & ½ day departure)	390,-
Buffalo bull – bis 40"	8,500,-
Buffalo bull – 40" – 42"	9,800,-
Buffalo bull – ab 42"	13,500,-
Buffalo cow	2,200,-

PLEASE NOTE:

- Plains game occurring in the same area as the buffalo can be added to the above safari at the price list.
- If a client wishes to hunt a second buffalo, he / she can do so for the trophy fee only (as above).
- Additional days can be added at € 390,- / person / day.
- Wounded animals are considered to be shot and will be charged for.
- All of the above animals are hunted on game farms and are fair chase.



INCLUSIVE

	Price (€)
Meet & greet at the airport	Included in the hunting costs
Accommodation, laundry service, meals, drinks & beverages	Included in the hunting costs
Licensed professional hunters' service	Included in the hunting costs
Use of fully equipped hunting vehicle	Included in the hunting costs
Safari-Staff (trackers, skinner, etc)	Included in the hunting costs
Field preparation of trophies & delivery to a local taxidermist	Included in the hunting costs
Trophy fees of the booked package, hunting licenses & permits	Included in the hunting costs
Includes 15 % South African VAT on daily rate	Included in the hunting costs
Transfer to/from Hoedspruit to the local hunting area	Included in the hunting costs



INDIVIDUAL PRICES

	Price (€)
Hunt guidance 1:1, per hunter / day	390,–
Hunt guidance 2:1, per hunter / day	300,–
Observer per Person / day	190,–
Arrival and departure day hunter 1:1 (½ day arrival & ½ day departure)	390,–
Arrival and departure day hunter 2:1 (½ day arrival & ½ day departure)	300,–
Arrival and departure day observer (½ day arrival & ½ day departure)	190,–
Sightseeing incl. Bed & Breakfast	On request
Cameraman per day	275,–
Video editing per 60 min. raw footage (optional)	180,–
Rent a rifle (incl. ammunition) per day	50,–
Meet & greet at the airport	Included in the hunting costs
Accommodation, laundry service, meals, drinks & beverages	Included in the hunting costs
Licensed professional hunters' service	Included in the hunting costs
Use of fully equipped hunting vehicle	Included in the hunting costs
Safari-Staff (trackers, skinner, etc)	Included in the hunting costs
Field preparation of trophies & delivery to a local taxidermist	Included in the hunting costs
Trophy fees of the booked package, hunting licenses & permits	Included in the hunting costs
Includes 15 % South African VAT on daily rate	Included in the hunting costs
Transfer to/from Hoedspruit to the local hunting area	Included in the hunting costs

ADDITIONAL COSTS (FOR ALL HUNTS)

	Price (€)
Flights via Johannesburg to Hoedspruit (we can book your flights to South Africa)	On request
Transfer to/from hunting ground from Johannesburg	400,–
When carrying your own weapon - send the necessary documents with DHL to South Africa	350,–
Air charter or commercial flights while on safari	On request
Travel insurance	On request
Hotel before / after the hunt if needed	On request
Additional trophy fees – no VAT on trophy fee	See price list
Packing, disinfecting and forwarding of trophies	On request
Suggested tips at buffalo hunts or packages for the professional hunter / day	90,–
Suggested tips at buffalo hunts or packages for trackers, skimmers and camp staff, etc.	360,–
Suggested tips at Plains Game hunts for the professional hunter / day	50,–
Suggested tips at Plains Game hunts for trackers, skimmers and camp staff, etc.	30,–/total/day
Organization fee hunter	200,–
Organization fee observer	100,–

SPECIES AND TROPHY FEES

BABOON – PERMIT



Price (€)
200,—*

BLESSBUCK



Price (€)	
Blessbuck	400,—**
Blessbuck, white	500,—

BONTEBUCK



Price (€)
3,000,—

BUFFALO



Price (€)	
40" outside horn spread or less	8,500,—
40 ½ – 42" outside horn spread	9,800
42" + outside horn spread	13,500,—
Buffalo cow	2,200,—

BUSHBUCK



Price (€)
1,000,—

BUSH PIG



Price (€)
650,—

DUIKER



	Price (€)
Ducker, blue – Permit	1,800,–
Ducker, red – Permit	1,500,–
Ducker, grey	400,–*

CIVET – PERMIT



Price (€)
1,300,–*

CROCODILE – PERMIT



	Price (€)
3,5 m long or less	5,500,–
3,5–4 m long	9,600,–
4 m or longer	14,500,–

ELAND, CAPE



Price (€)
2,500,–**

GEMSBUCK



Price (€)
1,300,–**

GIRAFFE



Price (€)
2,500,–*

GRYSBUCK – PERMIT



	Price (€)
Grys buck, cape	1,800,—
Grys buck, sharpes	1,800,—

HARTEBEEST RED



Price (€)
1,000,—**

HIPPO – PERMIT



	Price (€)
Hippo bull	10,000,—
Hippo cow	8,000,—

HONEY BADGER – PERMIT



Price (€)
1,300,—

IMPALA



	Price (€)
Impala Southern	400,—*
Impala Southern – Non Trophy	200,—*

KLIPSPRINGER – PERMIT



Price (€)
1,650,—**

KUDU



	Price (€)
Kudu Cape	2,000,—
Less than 52" of longest horn	2,500,—*
52 1/4 – 59 3/4	3,500,—*
Over 60"	Price on Request

LECHWE



Price (€)
3,000,—

LYNX



Price (€)
1,000,—

NYALA



Price (€)
2,300,—*

REEDBUCK



	Price (€)
Reedbuck, common	1,500,—
Reedbuck, mountain	600,—*

RHEBUCK, VAAL



Price (€)
3,000,—

SABLE



	Price (€)
40" or less: length of longest horn	3,200,–
40 – 42" length of longest horn	3,900,–
42"+	4,800,–

SPRINGBUCK



	Price (€)
Springbuck, black	600,–
Springbuck, cape	450,–
Springbuck, white	1,000,–

JACKAL



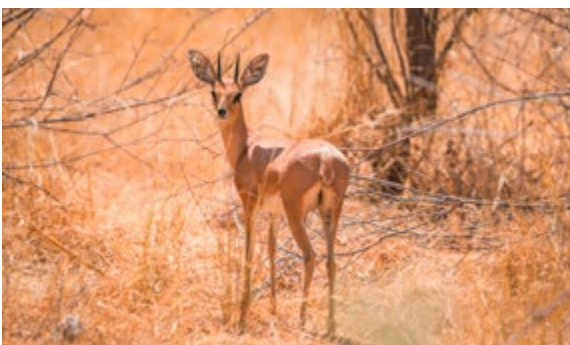
Price (€)
200,–*

BLUE WILDEBEEST



Price (€)
1,000,–*

STEENBUCK



Price (€)
500,–

WARTHOG



	Price (€)
Warthog	500,–*
Warthog – Non Trophy	250,–

WATERBUCK



Price (€)

2,000,-*

BLACK WILDEBEEST



Price (€)

1.000,-

Wounded animals are considered shot and will be charged for. Price available on request: Leopard, Elephant, Rhino, Sable, Hippo, Roan, Crocodile.

* These animals are readily available in our area

** These animals are available in our area but require a 2 ½ h drive to get to the hunting area.

HUNTING AREA MURCHISON PRIVATE NATURE RESERVE

Limpopo

● Johannesburg



ACCOMMODATION



VYGEBOOM LODGE

The 4* Vygeboom Lodge give his guest a real African feeling with it's beautiful built-in rocks and thatch roof. The lodge has 5 rooms (wifi is available) and can accommodate 10 people comfortably.

HUNTING PACKAGES

PACKAGE BUFFALO, SABLE & PLAINS GAME – 7 DAYS

The following package is a 7 days safari (6 full hunting days) for 1x hard bossed buffalo, 1x sable bull & Plains game. The hunt will take place on the 8,000 ha (20,000 acres) "Murchison Private Nature Reserve" in the Bushveld region of the Limpopo in South Africa. The average shots taken are less than 100 m.

Package includes	Price (€)
6x Hunting days à € 390,- / person / day	2,340,-
1x Tag (½ day arrival & ½ day departure)	390,-
1x Buffalo bull (maximum outside horn spread of 40")	8,500,-
1x Sable Bull (maximum length of longest horn of 40")	3,200,-
SAFARI COSTS	14,430,-

Included in the package	Price (€)
Meet & Greet at the airport	Included in the hunting costs
Accommodation, laundry service, meals, drinks & beverages	Included in the hunting costs
Licensed professional hunters' service	Included in the hunting costs
Use of fully equipped hunting vehicle	Included in the hunting costs
Safari-Staff (trackers, skinner, etc)	Included in the hunting costs
Field preparation of trophies & delivery to a local taxidermist	Included in the hunting costs
Trophy fees of the booked package, hunting licenses & permits	Included in the hunting costs
Includes 15 % South African VAT on daily rate	Included in the hunting costs
Transfer to/from Hoedspruit to the local hunting area	Included in the hunting costs

PLEASE NOTE:

- Plains game can be added to the above safari at the Limpopo price list.
- If a client wishes to add a second buffalo, he/she can do so for the trophy fee as per price list Limpopo.
- Additional days for hunting plains game can be added at € 460,- / person / day.
- All wounded animals are considered shot and will be charged for.

POSSIBLE ITINERARY

DAY 01	Departure from Europe, flight via Johannesburg to Hoedspruit
DAY 02	Arrival in Hoedspruit and transfer to camp
DAY 03–09	For example 6 hunting days
DAY 10	Transfer to airport, return flight
DAY 11	Arrive in Europe

ADDITIONAL COSTS (FOR ALL HUNTS)

	Price (€)
Flights via Johannesburg to Hoedspruit (we can book your flights to South Africa)	On request
Transfer to/from hunting ground from Johannesburg	400,–
When carrying your own weapon - send the necessary documents with DHL to South Africa	350,–
Air charter or commercial flights while on safari	On request
Travel insurance	On request
Hotel before / after the hunt if needed	On request
Additional trophy fees – no VAT on trophy fee	See price list
Packing, disinfecting and forwarding of trophies	On request
Suggested tips at buffalo hunts or packages for the professional hunter / day	90,–
Suggested tips at buffalo hunts or packages for trackers, skimmers and camp staff, etc.	360,–
Suggested tips at Plains Game hunts for the professional hunter / day	50,–
Suggested tips at Plains Game hunts for trackers, skimmers and camp staff, etc.	30,–/total/day
Organization fee hunter	200,–
Organization fee observer	100,–

RECOMMENDED EQUIPMENT



South Africa can be warm to hot during the months of April, May, September and October (65°–85°F). The months of June, July and August are winter and can start with night temp's dropping to below zero, warming up to around the mid 60°F or 70°F by midday.

CLOTHING:

Daily laundry service is provided so large quantities of clothing are not necessary. Comfortable clothing is recommended for daytime hunting, shorts or long pants can be worn. A comfortable pair of hiking boots is recommended but not essential, sneakers will be more than adequate if preferred. Evening wear is informal and anything of com-fort can be worn. A heavy jacket or insulated coveralls are recommended, especially months June through August.

PLEASE NOTE:

Military type cammo is not permitted in most African countries, but Realtree type ca-mo is normally accepted. Laundry is done each day except for the days when you change camp and the day of departure.

NOTES



Blaser Safaris GmbH

Europastraße 1/1, A-7540 Güssing | Österreich/Austria
AT +43 (0) 33 22 – 4296320 | DE +49 (0) 7562 – 9145414
www.blaser-safaris.com | info@blaser-safaris.com

Photo: Free Vector Maps, Adobe Stock/Fotolia, Pexels, Pixabay