

SOUTH AFRICA  
LIMPOPO  
2025



STALKING

**Blaser**  
safaris





Safaris can be conducted throughout the year; however the best time for a safari is between April & October. Some 40 different species of game can be hunted across the country, but each safari is individually planned to give you maximum enjoyment & satisfaction. The safari is suitable for the whole family, including non-hunters; there are a variety of interesting, photographic tours.

## CONTENT

General travel information.....	4
Hunting area Limpopo.....	6
Recommended equipment .....	16
Notes.....	17

# HUNTING AREA LIMPOPO

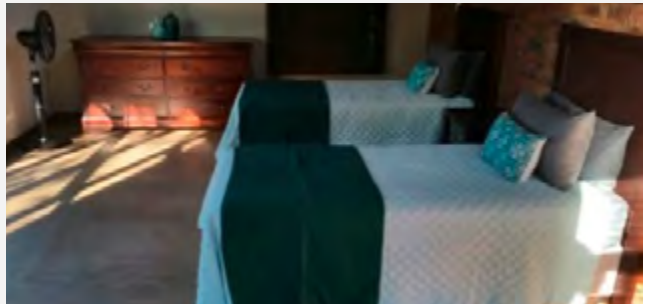
The area of our partner Wayne Wagner Safaris is located in Hoedspruit Limpopo Province and is situated between Phalaborwa, Gravelotte and Mica on the Olifants River.



## ACCOMMODATION

---

To be sure that the safari meets with your specific requirements a questionnaire will be completed before your arrival with your personal details, species to be hunted, food preferences and accommodation requirements. Both Lodges have wifi.



### INYOKA LODGE



### EXCELLENCE LODGE

For smaller parties we use also the Excellence Lodge.

## INDIVIDUAL PRICES

	<b>Price (€)</b>
Hunt guidance 1:1, per hunter / day	390,-
Hunt guidance 2:1, per hunter / day	300,-
Observer per Person / day	190,-
Arrival and departure day hunter 1:1 (½ day arrival & ½ day departure)	390,-
Arrival and departure day hunter 2:1 (½ day arrival & ½ day departure)	300,-
Arrival and departure day observer (½ day arrival & ½ day departure)	190,-
Sightseeing incl. Bed & Breakfast	On request
Cameraman per day	275,-
Video editing per 60 min. raw footage (optional)	180,-
Rent a rifle (incl. ammunition) per day	50,-
Meet & greet at the airport	Included in the hunting costs
Accommodation, laundry service, meals, drinks & beverages	Included in the hunting costs
Licensed professional hunters' service	Included in the hunting costs
Use of fully equipped hunting vehicle	Included in the hunting costs
Safari-Staff (trackers, skinner, etc)	Included in the hunting costs
Field preparation of trophies & delivery to a local taxidermist	Included in the hunting costs
Trophy fees of the booked package, hunting licenses & permits	Included in the hunting costs
Includes 15 % South African VAT on daily rate	Included in the hunting costs
Transfer to/from Hoedspruit to the local hunting area	Included in the hunting costs



## ADDITIONAL COSTS (FOR ALL HUNTS)

	Price (€)
Flights via Johannesburg to Hoedspruit (we can book your flights to South Africa)	On request
Transfer to/from hunting ground from Johannesburg per person	400,-
When carrying your own weapon - send the necessary documents with DHL to South Africa	350,-
Air charter or commercial flights while on safari	On request
Travel insurance	On request
Hotel before / after the hunt if needed	On request
Additional trophy fees – no VAT on trophy fee	See price list
Packing, disinfecting and forwarding of trophies	On request
Suggested tips at buffalo hunts or packages for the professional hunter / day	90,-
Suggested tips at buffalo hunts or packages for trackers, skimmers and camp staff, etc.	360,-
Suggested tips at Plains Game hunts for the professional hunter / day	50,-
Suggested tips at Plains Game hunts for trackers, skimmers and camp staff, etc.	30,-/total/day
Organization fee hunter	100,-



## SPECIES AND TROPHY FEES

### BABOON – PERMIT



**Price (€)**

200,-\*

### BLESSBUCK



**Price (€)**

Blessbuck

450,-\*\*

Blessbuck, white

500,-

### BONTEBUCK



**Price (€)**

3,000,-

### BUFFALO



**Price (€)**

40" outside horn spread or less

8,750,-

40 1/4 – 43" outside horn spread

9,850

43" + outside horn spread

13,500,-

Buffalo cow

2,200,-

### BUSHBUCK



**Price (€)**

1,000,-

### BUSH PIG



**Price (€)**

650,-



## DUIKER



	Price (€)
Ducker, blue – Permit	1,800,-
Ducker, red – Permit	1,500,-
Ducker, grey	400,-*

## CIVET – PERMIT



Price (€)
1,300,-*

## CROCODILE – PERMIT



	Price (€)
3,5 m long or less	5,500,-
3,5–4 m long	9,600,-
4 m or longer	14,500,-

## ELAND, CAPE



Price (€)
2,700,-**

## GEMSBUCK



Price (€)
1,300,-**

## GIRAFFE



Price (€)
2,500,-*

## GRYSBUCK – PERMIT



	Price (€)
Grysbeck, cape	1,800,-
Grysbeck, sharpes	1,800,-

## HARTEBEEST RED



	Price (€)
	1,000,-**

## HIPPO – PERMIT



	Price (€)
Hippo bull	10,000,-
Hippo cow	8,000,-

## HONEY BADGER – PERMIT



	Price (€)
	1,300,-

## IMPALA



	Price (€)
Impala Southern	400,-*
Impala Southern – Non Trophy	200,-*

## KLIPSPRINGER – PERMIT



	Price (€)
	1,650,-**

## KUDU



	Price (€)
Kudu Cape	2,500,-
Less than 52" of longest horn	2,650,-*
52 1/4 – 59 3/4	3,650,-*
Over 60"	Price on Request

## LECHWE



Price (€)
3,000,-

## LYNX



Price (€)
1,300,-

## NYALA



Price (€)
2,300,-*

## REEDBUCK



	Price (€)
Reedbuck, common	1,500,-
Reedbuck, mountain	600,-*

## RHEBUCK, VAAL



Price (€)
3,000,-

## SABLE



	Price (€)
40" or less: length of longest horn	3,200,-
40 – 42" length of longest horn	3,900,-
42"+	4,800,-

## SPRINGBUCK



	Price (€)
Springbuck, black	600,-
Springbuck, cape	450,-
Springbuck, white	1,000,-

## JACKAL



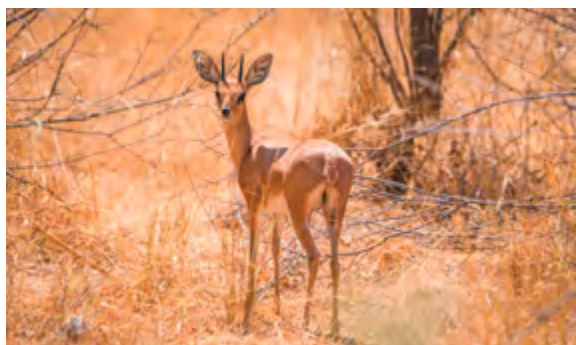
Price (€)
200,-*

## BLUE WILDEBEEST



Price (€)
1,000,-*

## STEENBUCK



Price (€)
500,-

## WARTHOG



	Price (€)
Warthog	500,-*
Warthog – Non Trophy	300,-

## WATERBUCK



**Price (€)**

---

2,000,-\*

---

Wounded animals are considered shot and will be charged for. Price available on request: Leopard, Elephant, Rhino, Sable, Hippo, Roan, Crocodile.

\* These animals are readily available in our area

\*\* These animals are available in our area but require a 2 ½ h drive to get to the hunting area.

## RECOMMENDED EQUIPMENT



South Africa can be warm to hot during the months of April, May, September and October (65°–85°F). The months of June, July and August are winter and can start with night temp's dropping to below zero, warming up to around the mid 60°F or 70°F by midday.

### **CLOTHING:**

Daily laundry service is provided so large quantities of clothing are not necessary. Comfortable clothing is recommended for daytime hunting, shorts or long pants can be worn. A comfortable pair of hiking boots is recommended but not essential, sneakers will be more than adequate if preferred. Evening wear is informal and anything of com-fort can be worn. A heavy jacket or insulated coveralls are recommended, especially months June through August.

### **PLEASE NOTE:**

Military type cammo is not permitted in most African countries, but Realtree type ca-mo is normally accepted. Laundry is done each day except for the days when you change camp and the day of departure.





**Blaser Safaris GmbH**

Europastraße 1/1, A-7540 Güssing | Österreich/Austria

AT +43 (0) 33 22 – 4296320

[www.blaser-safaris.com](http://www.blaser-safaris.com) | [info@blaser-safaris.com](mailto:info@blaser-safaris.com)

Photo: Free Vector Maps, Adobe Stock/Fotolia, Pexels, Pixabay

The General Terms and Conditions of Blaser Safaris GmbH apply. Blaser Safaris GmbH acts as an intermediary and is not the organizer of hunting tours. Subject to errors and alterations of prices and programs. Version 12/2024