

SOUTH AFRICA
PROVINCE LIMPOPO
THABAZIMBI
2023



STALKING

Blaser
safaris





Safaris can be conducted throughout the year; however the best time for a safari is between April & October. Some 40 different species of game can be hunted across the country, but each safari is individually planned to give you maximum enjoyment & satisfaction. The safari is suitable for the whole family, including non-hunters; there are a variety of interesting, photographic tours.

CONTENT

General travel information.....	4
Hunting area Limpopo.....	6
Hunting- and additional costs.....	8
Species and trophy fees.....	10
Recommended equipment	16
Notes	17

GENERAL TRAVEL INFORMATION



CURRENCY

1 Rand (R) = 100 Cent (c)



TIME DIFFERENCE

CET +1 h



ELECTRICITY

220 Volt/50 hertz alternating current, three-pin plug sockets (adapter required)



ENTRY REQUIREMENTS

Please note the entry rules for each country. You can obtain this information from the relevant consulate. If you are a visa, please note that you are responsible for obtaining the visa yourself.



CLIMATE

The geographical and climate conditions in the country generally do not require a different way of life. The climate is generally very pleasant and mild. The seasons are offset by 6 months compared to Europe: Winter happens during European summer and vice versa.

Due to its size and the different landscapes, South Africa has a variety of different climate zones (subtropical to Mediterranean climate, but the evenings and nights can be very cold in the winter months).

Summer rain from October to April in the northern and eastern parts of the country; rain also in winter on the south coast. The temperatures at higher elevations (Johannesburg and Drakensberg) can drop below freezing in winter.



INSURANCE

Taking out travel insurance in case you fall ill or require ambulance services is strongly advised.



HEALTH

Larger cities in South Africa have (private) hospitals and doctors meeting the highest international standards, but also charging correspondingly high fees. If medical treatment is sought, payment has to be made directly on site (in hospitals usually by paying a deposit before admission).

Vaccinations

Please check the vaccination rules for each country. This information is provided by the relevant institute for tropical medicine. If vaccinations are required, please note that you are personally responsible for complying with the rules.

No vaccinations are required on entry, except when entering from an area where yellow fever is present. However, apart from the basic vaccinations for all travelers (diphtheria/tetanus/polio, hepatitis A & B, typhoid), the Center for Travel Health recommends that independent tourists and those planning an extended stay have a preventive vaccination against rabies.

Please note the changes in vaccination requirements for travelers via Johannesburg, South Africa on outbound and especially on inbound flights (in force since 6/6/2011):

According to South African law, all travelers from the following countries **MUST** be vaccinated against yellow fever: Angola, Benin, Burkina Faso, Burundi, Central African Republic, Cameroon, Chad, Republic of the Congo, Cote d'Ivoire, Democratic Republic of the Congo, Ethiopia, Gabon, Gambia, Ghana, Kenya, Mali, Niger, Nigeria, Rwanda, Senegal, Sierra Leone, Somalia, Sudan, Togo, Uganda, Tanzania, Zambia.

Because of the current development mentioned above, we recommend (it is not currently law, but you should take it into consideration) that travelers have yellow fever vaccinations for visiting the following countries in southern Africa: Mozambique, Zimbabwe, Botswana

Malaria prophylaxis (in particular the use of good insect repellents on skin and clothing) is expressly recommended for the Kruger National Park, the northern KwaZulu-Natal and the neighboring regions around St. Lucia as well as parts of Mpumalanga and the Northern Province, in particular during the humid summer months (November to March). For trips to KwaZulu-Natal, special care should be taken regarding hygiene and only bottled water should be consumed due to the risk of a cholera infection. Tuberculosis is also relatively widespread in South Africa and cases keep increasing. A TB vaccination is therefore recommended, especially for children.

Caution

Following standard hygiene measures, such as frequent hand washing, is generally sufficient.

In towns and areas with fewer tourists, take care when consuming raw fruit and salads. The tap water is usually drinkable, but care is still advised. Schistosomes (bilharzia), a parasite occurring mainly in stagnant water, is present in all southern African bodies of water – appropriate care must be taken.

During the humid season in particular, ticks are prevalent and cause tick bite fever. While not life-threatening, it causes high fever and severe weakness and requires an extended convalescence period. Taking a travel medical kit containing your regular medication plus medication for common travel-related illnesses is recommended.

HUNTING AREA LIMPOPO

In the North of South Africa, in Limpopo, Gerhard Pro Hunting Safari offers you the best hunting opportunities. Our hunting farms are mostly privately owned and offer you best trophy hunts on 37 000 ha.

Thabazimbi is situated in the western region of Limpopo in South Africa.

The area is characterized by rugged mountains and relatively untouched bushveld. Marakele National Park is located about 20 km northeast in the heart of the Waterberg. The mountains and valleys characterize the unique untouched nature and diverse life. As our lodge is situated at the foot of the Marakele National Park, our hunting areas are in the foothills of the Thabazimbi area. In this Bushveld it is not easy to hunt, as it is a rough area and the weather in season has a great influence on how to find the best trophies.



ACCOMMODATION

In the fabulous lodge you can expect excellent service to meet all your needs. There are three chalets fully equipped for 5 to 6 people, so you will want for nothing.



POSSIBLE ITINERARY

Transfer with car:

From / back Johannesburg Airport around 2 ½ hrs

DAY 01	Departure from Europe
DAY 02	Arrival in Johannesburg, meet & greet, transfer to camp
DAY 03–08	For example 6 hunting days
DAY 09	Transfer to airport, return flight
DAY 10	Arrive in Europe

HUNTING- AND ADDITIONAL COSTS

INDIVIDUAL PRICES

	Price (€)
Plains Game, hunt guidance 1:1, per hunter / day	400,–
Plains Game, hunt guidance 2:1, per hunter / day	320,–
Observer together with a hunter in one chalet per person / day	–
Trophy handling fee	100,–
Hire rifle, per day	40,–
Ammunition	On request
Baiting Fee (if needed)	On request
Meet & greet at the airport Johannesburg, transfer Johannesburg airport-lodge ret.	Included in the hunting costs
Professional guide	Included in the hunting costs
Safari-Staff (trackers, skinner, etc)	Included in the hunting costs
Accommodation, full board (all meals / beverages)	Included in the hunting costs
Hunting vehicle	Included in the hunting costs
Airport transfer to the nearest airport	Included in the hunting costs
Fieldpreparation from trophies	Included in the hunting costs
Government license fees	Included in the hunting costs



ADDITIONAL COSTS (FOR ALL HUNTS)

	Price (€)
Flights (we can book your flights to South Africa)	On request
Air charter cost	On request
Travel insurance	On request
If you bring your own weapon we can organize a gun permit, clearance at the airport	around 400,-
Hotel before / after the hunt if needed	On request
All other activities (sightseeing)	On request
Spirits, liqueur	On request
Trophy fees	See price list
Lost & wounded animals will be charged	
Packing, disinfecting and forwarding of trophies	On request
Suggested tips for professional hunter / hunt guidance 1:1 / safari	250,- to 400,-
Suggested tips for professional hunter / hunt guidance 2:1 / safari / hunter (payable to the professional hunter)	200,- to 300,-
Suggested tips for camp staff / hunt guidance 1:1 / safari	150,- to 200,-
Suggested tips for camp staff / hunt guidance 2:1 / safari / hunter (payable to Gerhard Po Hunting Safaris)	100,- to 150,-
Organization fee hunter	200,-
Organization fee observer	100,-



SPECIES AND TROPHY FEES

MOUNTAIN RIEDBUCK



Price (€)

1,060,-

BLESSBUCK



Price (€)

Blessbuck

650,-

Blessbuck white

690,-

BROWN HYENÄ



Price (€)

3,900,-**

BUFFALO



Price (€)

34 – 39,9"

10,640,-

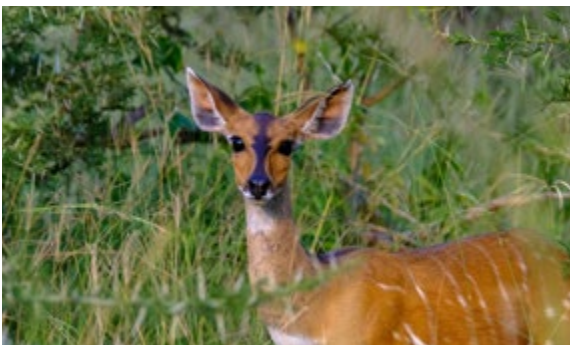
40 – 42,9"

13,200,-

43 – 45"*

18,820,-

BUSHBUCK



Price (€)

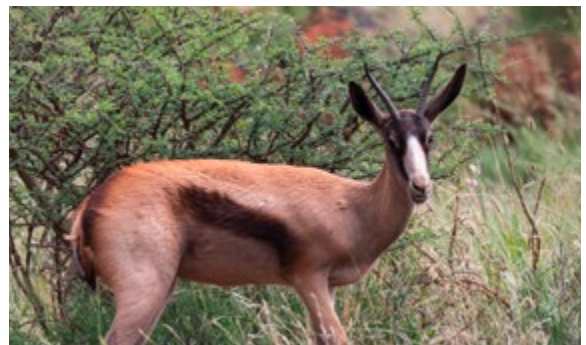
up to 16"

1,230,-

16" +

2,290,-

COPPER SPRINGBUCK



Price (€)

950,-

DUICKER



Price (€)

620,-

ELAND



Price (€)

2,580,-

GINSTER CAT



Price (€)

390,-*

GIRAFFE



Price (€)

Giraffe

2,350,-

Giraffe (female)

1,680,-

GNU (WILDEBEEST)



Price (€)

890,-

SOUTHERN REEDBUCK



Price (€)

2,350,-**

HARTEBEEST



Price (€)

950,—

HONEY BADGER



Price (€)

1,010,—**

IMPALA



Price (€)

Impala 540,—

Impala black 1,680,—

CARACAL



Price (€)

840,—*

KLIPSPRINGER



Price (€)

1,230,—*

CROKODILE



Price (€)

3,6 – 4 m long 7,300,—*

4 – 4,2 m long 10,100,—*

4,2 – 4,5 m long 14,800,—*

4,5 – 5 m long ab 16,700,—*

KUDU



	Price (€)
Kudu up to 54"	2,580,-
Kudu up to 60"	4,250,-
Kudu 60" +	8,740,-

LECHWE



Price (€)
3,920,-*

NYALA



Price (€)
2,130,-

HIPPO



Price (€)
9,550,-*

ORYX



	Price (€)
Oryx	1,070,-
Oryx golden	2,130,-*

RED RIVER HOG



Price (€)
710,-*

ROAN



Price (€)

7,730,-*

SABLE



Price (€)

Säbel up to 40"

3,130,-

Säbel 40 – 45"

6,600,-

Säbel 45" +

8,960,-

SERVAL CAT



Price (€)

2,000,-*

SPRINGBUCK



Price (€)

Springbuck

840,-

Springbuck black

980,-

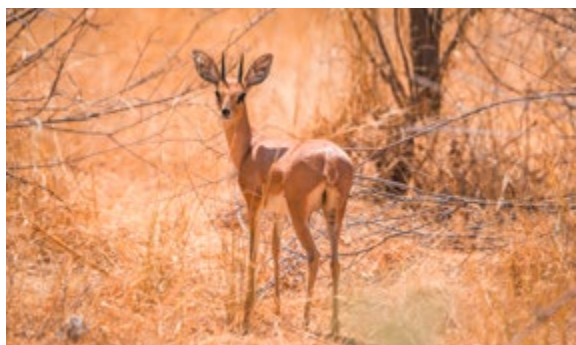
Springbuck white

1,060,-

Springbuck copper

950,-

STEENBUCK



Price (€)

620,-

PORCUPINE



Price (€)

390,-*

OSTRICH



Price (€)

500,-

SPOTTED HYENA



Price (€)

6,150,-

WARTHOG



Price (€)

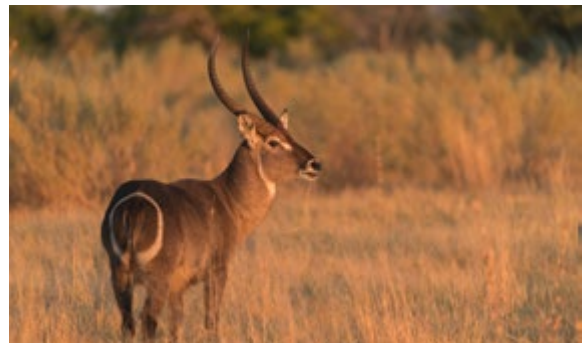
Warthog

280,-

Warthog 10" +

560,-

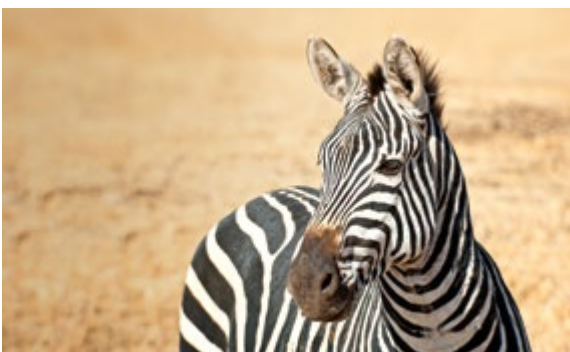
WATERBUCK



Price (€)

2,130,-

ZEBRA



Price (€)

960,-*

CIVET CAT



Price (€)

730,-*

Wounded animals are considered shot and will be charged for.

* These animals are readily available in our area.

** These animals are available in our area but require a 2 ½ h drive to get to the hunting area.

RECOMMENDED EQUIPMENT



South Africa can be warm to hot during the months of April, May, September and October (68°–85°F). The months of June, July and August are winter and can start with night temp's dropping to below zero, warming up to around the mid 60°F or 68°F by midday.

CLOTHING:

2 Pairs good walking boots or running shoes (run in)
4 Pairs good socks
3 Pairs long hunting pants (dark khaki or olive green)
3 Pairs short hunting pants (early hunts – april, may in South Africa)
3 Pairs hunting shirts (dark khaki or olive green)
1 Realtree coverall with zip
1 Hunting Jacket – realtree type camo (dark khaki or olive green)
1 Warm sweater or jumper
Gloves
Suncream
Cap or hat
Casual wear for evenings
Insect repellent
Personal camera equipment / binoculars

PLEASE NOTE:

Military type cammo is not permitted in most African countries, but Realtree type camo is normally accepted. Laundry is done each day except for the days when you change camp and the day of departure.

NOTES

NOTES



Blaser Safaris GmbH

Europastraße 1/1, A-7540 Güssing | Österreich/Austria
AT +43 (0) 33 22 – 4296320 | DE +49 (0) 7562 – 9145414
www.blaser-safaris.com | info@blaser-safaris.com

Photo: Free Vector Maps, Adobe Stock/Fotolia, Pexels, Pixabay