

TANZANIA 2025



STALKING

Blaser
safaris





Hunting in Tanzania ... a story of peerless encounters. Tanzania is without a doubt, one of the most famous and exclusive hunting safari destinations in Africa.

CONTENT

Hunting in Tanzania.....	5
General hunting information.....	6
Area KILOMBERO VALLEY	8
Area MASWA MAKAO	12
Area RUAHA VALLEY	14
Area MASAILAND, ENDUIMET & LAKE NATRON.....	18
Area LIWALE	22
Hunting- and additional costs for all areas	24
Recommended Equipment	26



HUNTING IN TANZANIA



The areas Rungwa, Kilombero Valley, Maasailand and Selous of Kilombero North Safaris Ltd. are the perfect examples of all Tanzania has to offer: an incomparable variety of wildlife and stunning vistas. 25% of its land mass is conserved for wildlife parks and reserves with over 190 appointed hunting blocks. The wildlife is some of the most tremendous of all African countries. Species availability varies widely across the country and also includes highly prized rarities.

With the introduction of the new blocks of Kilombero North Safaris Ltd. they are now able to offer the avid huntsman a larger variety for his sports hunting pursuits.

WING SHOOTING: This traditional pursuit can thoroughly be enjoyed here in Tanzania, particularly in the vast Maasailand. With its immense expansion of flat seemingly endless plains, it offers an exceptional variety of bird life: Guinea & Spur Fowl, Francolin, Bustard, Dove, Quail and Sandgrouse, to name but a few.

FALCONRY: If you are an experienced falconer, our concessions offer you the opportunity to indulge your pursuit in the wilderness of Tanzania. Some of our con-cession offer exceptional endless savannah's with prey such as Steenbok, DikDik, Common Duiker, Guinea and Spur Fowls, Francolin, Dove, Quail, Sandgrouse. The choice is abundant, allowing many an occasion for a falcon to hunt.

BOW HUNTING: Kilombero North Safaris hunting blocks offer many opportunities for a more "traditional" form of hunt, bow hunting. Opportunities abound and en-able the bow enthusiast enthralling experiences.

GENERAL HUNTING INFORMATION

FIREARMS & AMMUNITION

Please bring your own firearms which you are accustomed to. You are permitted to import three guns into Tanzania for your safari. Handguns, together with automatic and semi-automatic weapons are strictly prohibited.

Kilombero North Safaris arranges all import/export permits as required in Tanzania for firearms and ammunition, which are subject to Import Duty.

Recommended calibers for dangerous game are .375 H&H Magnum, .416 Rigby and the .470 Express. For the plains game hunt (long range shooting) use telescopic sights.

You are allowed to import 200 cartridges for each different caliber or gauge, which is sufficient. Please bring your own ammunition.

Airlines require that firearms and ammunition be checked. Firearms should be securely cased and unloaded, with ammunition in a separate container.

You must advise the commercial airline that you are traveling with firearms and ammunition. Each Airline has strict and individual restrictions as the weight and packaging, so please check with the Airline as to their requirements upon booking.

CITES PERMITS

CITES permits from your country of residence (or country to where your trophies are to be shipped), must be obtained for the animals you wish to hunt.

Please note Kilombero North Safaris are not responsible for obtaining CITES and other import permits for your final destination.

REGULATIONS

Hunting Regulations of Tanzania Wildlife Department.

They permit the hunting of both lion and leopard under the following conditions.

- **21 day safari:**
If hunt guidance 1:1 – 1 Permit for 1 Lion and 1 Leopard
If hunt guidance 2:1 – 1 Permit for 1 Lion and 1 Leopard (the hunters will share the permit)
- **Legal length:**
The minimum legal length for Leopard is 1,50 meters (60 inches) from tip of nose to base of tail
The minimum legal lengths for Elephant is 1,60 meters (62,99 inches) of tusk or 18 kilograms weight (39,6 pounds)The minimum legal length for Crocodile is 3 meters (118 inches) from tip of nose to tip of tail
- Minimum caliber for dangerous game is .375" (9,3mm).
- Companion Rates: Sharing the quota from a license belonging to a primary hunter:
10 days Regular \$ 19,000,- // 14 days Major \$ 29,000,- // 14 days Premium \$ 30,500,- // 16 days Premium \$ 34,000,- // 21 days Premium \$ 42,500,-

BOOKING CONDITIONS

A deposit of 50 % of the safari rate is required to confirm the booking.

Game Trophy Fees and all Government Royalties charged would be those applicable to the year the safari is taken regardless of what is quoted on the initial contract. Invoices and quotes are subject to change at any time, based on any changes in Government fees, taxes and/or Game Trophy Fees, which are out of our control.

CANCELLATIONS

Any cancellation occurring prior to 60 days of the start of the safari, the deposit will be refunded only if the safari is resold and a 15 % administration fee will be deducted.

No refund is applicable to any cancellation occurring within 60 days of the start of the safari, therefore it is highly recommended to get coverage of Trip Cancellation Insurance.

Force Majeure, meaning acts of God, floods, tempest, fire or accident, war threat of war, insurrection, civil disturbance, government intervention, weather conditions or other untoward occurrences. In the event of Force Majeure, our Partner is entitled to vary or cancel any itinerary or arrangement. Refunds in this case shall be made to refund where possible.





AREA KILOMBERO VALLEY

For untold years, the Kilombero Valley has been the destination of choice for the serious and discerning Hunter, and from it we offer you over 7,000 sq/km of exclusive private land. With vast floodplains, reed islands, forested hills and untamed rapids, Kilombero is the largest wetland of East Africa. It is home to a veritable biodiversity.

Big game roams freely, including some of Africa's largest buffalo herds. The Valley is home to enormous Crocodiles and an abundance of Hippos in the vast complex of its fresh water rivers. Large numbers of the rare Puku and other antelope such as the Roosevelt Sable, Eland and Hartebeest can also be found roaming here.



	Price per hunter (USD)
10 day Safari on buffalo & Regular Plains Game, hunt guidance 1:1	35,000,-
10 day Safari on buffalo & Regular Plains Game, hunt guidance 2:1	31,900,-
14 day Safari on buffalo & Major Plains Game, hunt guidance 1:1	45,500,-
14 day Safari on Leopard & Premium Plains Game, hunt guidance 1:1	57,500,-
16 day Safari on lion & Premium Plains Game, hunt guidance 1:1	76,500,-
21 day Safari Premium Full Bag, hunt guidance 1:1	94,500,-

wounded and lost animals will be charged (see trophy fees in the brochure)

PLEASE NOTE FOR BOTH AREAS: Prices are subject to change and depend on availability.



CAMP: RUHUDJI & FURUA, MWATISI, DHALEDHALE

CAMP DHALA

Way into Ruhudji – International Entry Point: Dar es Salaam

Price on request (USD)

Air Charter: Ruhudji

Road Transfer max. 3 pers. per car Ruhudji – Camp 30 min.

Commercial Flight: Iringa Airport

Road Transfer max. 3 pers. per car Iringa Airport – Camp 7 hours

Way into Camp Furua – International Entry Point: Dar es Salaam

Price on request (USD)

Air Charter: Ruhudji

Road Transfer max. 3 pers. per car Ruhudji – Camp 1 hour

Commercial Flight: Iringa Airport

Road Transfer max. 3 pers. per car Iringa Airport – Camp 8 hours

Way into Camp Dhala – International Entry Point: Dar es Salaam

Price on request (USD)

Air Charter: Ndolo

Road Transfer max. 3 pers. per car Ndolo – Camp 30 min.

Commercial Flight: Iringa Airport

Road Transfer max. 3 pers. per car Iringa Airport – Camp 6 hours

NOTE: There is NO fishing available in Camp Dhala

TROPHY FEES: KILOMBERO VALLEY

Species	Sub-Species	Trophy Fee (USD)	Regular Licence 10	Major Licence 14	Premium Licence 14/16/21
Baboon	Yellow (Cites)	550,-	2	2	3
Buffalo	Cape	6,000,-	2	3	3/3/4
2. Buffalo	Cape	6,000,-			
3. + Buffalo	Cape	6,540,-			
Bushbuck	Chobe	1,970,-	1	1	1
Bushpig		1,640,-	1	1	1
Honey Badger	Ratel	550,-		1	1
Duiker	Common	1,090,-	1	1	2
Eland	Livingstone's	4,910,-		1	1
Hartebeest	Lichtenstein's	2,180,-	1	1	2
Cat	Civet	550,-		1	1
Cat	Genet	550,-		1	1
Cat	Serval	1,090,-			1
Cat	Wild	550,-			1
Crocodile*	Nil	4,910,-		1	1
Leopard*		11,450,-			1*
Lion*		16,350,-			1*
Hippopotamus		4,910,-		1	2
Puku		2,180,-		1	1
Hyena	Spotted	1,640,-	1	1	2
Reedbock	Southern	1,640,-	1	1	2
Sable	Roosevelts's	7,090,-		1	1
Jackal	Black Backed	550,-	1	1	1
Porcupine	Crested	550,-		1	1
Warthog		1,090,-	1	2	3
Waterbuck	Common	2,180,-	1	2	3
Zebra	Burchell's	2,180,-	1	1	1/1/2

* Lion and Leopard are only available on their respective licenses, all are only included together on a 21 day Premium Full bag.



AREA MASWA MAKAO

Nestled in between two of the most famous wildlife areas in the world, Maswa Makao WMA sits on the southern border of the Mara Serengeti ecosystem and just to the west of the Ngorongoro Crater conservation area, making it one of the most sought after hunting destinations in all of Tanzania.

The area is home to a plethora of wildlife, including four

of the Big Five – Lion, Elephant, Cape Buffalo, and Leopard. The annual Great Migration, one of nature’s greatest spectacles, passes through this region, from December to March adding to the area’s allure.

Plains game species such as Kudu, Impala, Eland, and Klipspringer also add to the magic of the region.



	Price per hunter (USD)
10 day Safaris on Buffalo & Regular Plains Game, hunt guidance 1:1	55,000,-
14 day Safari on Leopard & Premium Plains Game, hunt guidance 1:1	85,000,-
16 day Safari on Elephant & Premium Plains Game, hunt guidance 1:1	95,000,-
21 day Safari Premium Full Bag, hunt guidance 1:1	165,000,-

wounded and lost animals will be charged (see trophy fees in the brochure)

PLEASE NOTE : Prices are subject to change and depend on availability.

Way into Camp Maswa Makao – International Entry Point: Kilimanjaro	Price on request (USD)
Air Charter: Kilimanjaro – Makao Airstrip Road Transfer max. 3 pers. per car Makao – Camp 30 min.	
Commercial Flight: Kilimanjaro Road Transfer max. 3 pers. per car Kilimanjaro – Camp 6 hours	

TROPHY FEES: MASWA MAKAO

Species	Sup-Species	Trophy Fee (USD)	Regular Licence 10	Premium Licence 14/16/21
Baboon	Yellow	550,-	2	3
Buffalo	Cape	6,000,-	2	3/3/4
2. Buffalo	Cape	6,000,-		
3. + Buffalo	Cape	6,540,-		
Bushbuck	Chobe	1,970,-	1	1
Bushbuck	Masai	2,180,-	1	1
Bushpig		1,640,-	1	1
Honey Badger	Ratel	550,-		1
Dikdik	Kirk's	1,090,-	1	1
Duiker	Common	1,090,-	1	1
Eland	Patterson's	4,910,-		1
Elephant* under 59,9 lbs		28,780,-		1*
Elephant*from 60,0-70,0 lbs		45,780,-		
Elephant* from 70,1-99,9 lbs		58,860,-		
Elephant* over 99,9 lbs		98,100,-		
Hartebeest	Coke's	5,450,-		1
Hyena	Spotted	1,640,-	1	2
Impala	East African	1,640,-	2	3
Cat	Civet	550,-		1
Cat	Genet	550,-		1
Cat	Serval	1,090,-		1
Cat	Wild	550,-		1
Klipspringer		2,730,-		1
Kudu	Greater	4,910,-		1
Leopard*		11,450,-		1*
Lion**		16,350,-		1*
Reedbock	Bohor	1,640,-		-/-/1
Jackal	Black Backed	550,-	1	1
Porcupine	Crested	550,-		1
Warthog		1,090,-		3
Zebra	Burchell's	2,180,-	1	2

* Elephant and Leopard are only available on their respective licences, both are only included together on a 21 day Premium Full Bag.

**Lion is only available on a 21 day Premium Full Bag licence in this area



AREA RUAHA VALLEY

The Ruaha Valley is one of the most important Elephant habitats in Africa and it forms part of a protected area boarding the Ruaha National Park, the largest of its kind in East Africa. Our hunting

blocks, Lunda, Kinyangesi and Waga are situated on the Eastern boundary of Ruaha and are arguably the best Elephant hunting areas in Tanzania today. Due to careful management and limiting our quota,

this area also plays host to exceptional Lion and Leopard hunting, as well as exemplary Sable, Kudu and Cape Buffalo.



CAMP KINYANGESI

10 day Safari on Buffalo & Regular Plains Game, hunt guidance 1:1

Price per hunter (USD)

35,000,-

14 day Safari on Leopard & Premium Plains Game, hunt guidance 1:1

69,000,-

16 day Safari on Elephant & Premium Plains Game, hunt guidance 1:1

95,900,-

16 day Safari on Lion & Premium Plains Game, hunt guidance 1:1

89,900,-

21 day Safari Premium Full Bag, hunt guidance 1:1

125,000,-

Way into Camp Kinyangesi – International Entry Point: Dar es Salaam

Price on request (USD)

Air Charter: Dar es Salaam – Msembe Airstrip

Road Transfer max. 3 pers. per car Msembe – Camp 1 hour 15 min.

Commercial Flight: Iringa Airport

Road Transfer max. 3 pers. per car Iringa – Camp 4 hours



CAMP WAGA

	Price per hunter (USD)
14 day Safari on Leopard & Premium Plains Game, hunt guidance 1:1	47,900,-
16 day Safari on Elephant & Premium Plains Game, hunt guidance 1:1	60,000,-

Way into Camp Waga – International Entry Point: Dar es Salaam

Price on request (USD)

Air Charter: Dar es Salaam – Msembe Airstrip
Road Transfer max. 3 pers. per car Msembe – Camp 1 hour 15 min.

Commercial Flight: Iringa Airport
Road Transfer max. 3 pers. per car Iringa – Camp 4 hours

CAMP LUNDA

	Price per hunter (USD)
10 day Safari on Buffalo & Regular Plains Game, hunt guidance 1:1	66,000,-
14 day Safari on Leopard & Premium Plains Game, hunt guidance 1:1	102,000,-
16 day Safari on Elephant & Premium Plains Game, hunt guidance 1:1	114,000,-
21 day Safari Premium Full Bag, hunt guidance 1:1	198,000,-

Way into Camp Lunda - International Entry Point: Dar es Salaam

Price on request (USD)

Air Charter: Dar es Salaam - Lunda Airstrip
Road Transfer max. 3 pers. per car – Camp 30 min.

Commercial Flight: Iringa Airport
Road Transfer max. 3 pers. per car Iringa – Camp 3 hours

wounded and lost animals will be charged (see trophy fees in the brochure)

PLEASE NOTE FOR BOTH AREAS: Prices are subject to change and depend on availability.

TROPHY FEES: RUAHA VALLEY

Species	Sub-Species	Trophy Fee (USD)	Regular Licence 10	Premium Licence 14/16/21
Baboon	Yellow	550,-	2	3
Buffalo	Cape	6,000,-	2	2/2/3
2. Buffalo	Cape	6,000,-		
3. + Buffalo	Cape	6,540,-		
Bushbuck	Chobe	1,970,-	1	1
Bushpig		1,640,-	1	1
Honey Badger	Ratel	550,-	1	1
Dikdik	Kirk's	1,090,-	1	1
Duiker	Common	1,090,-	1	1
Duiker	Harvey's Red	2,180,-	1	1
Eland	Livingstone's	4,910,-		1
Elephant* under 59,9 lbs		28,780,-		1*
Elephant* up to 60,0-70,0 lbs		45,780,-		
Elephant* from 70,1-99,9 lbs		58,860,-		
Elephant* over 99,9 lbs		98,100,-		
Hyena	Spotted	1,690,-	1	2
Impala	Southern	1,640,-	2	2
Cat	Civet	550,-		1
Cat	Genet	550,-		1
Cat	Serval	1,090,-		1
Klipspringer		2,730,-		1
Kudu	Greater	4,910,-		1
Kudu	Lesser	10,360,-		1
Leopard*		11,450,-		1*
Lion*		16,350,-		1*
Reedbuck	Southern	1,640,-	1	2
Roan		7,630,-		1
Sable	Common	7,090,-	1	1
Schakal	Black Backed	550,-	1	1
Porcupine				
Warthog		1,090,-	1	2
Waterbuck	Defassa	2,180,-	1	1
Zebra	Burchell's	2,180,-	1	2

* Elephant, Leopard and Lion are only available on their respective licences, both are only included together on a 21 day Premium Full Bag.

TROPHY FEES: LUNDA

Species	Sub-Species	Trophy Fee (USD)	Regular Licence 10	Premium Licence 14/16/21
Baboon	Yellow (Cites)	550,-	2	3
Buffalo	Cape	6,000,-	2	3
2. Buffalo	Cape	6,000,-		
3. + Buffalo	Cape	6,540,-		
Bushbuck	Chobe	1,970,-	1	1
Bushpig		1,640,-	1	1
Honey Badger	Rate	550,-		1
Dikdik	Kirk's	1,090,-	1	1
Duiker	Common	1,090,-	1	2
Eland	Livingstone's	4,910,-		1
Elephant* under 59,9 lbs		28,780,-		1*
Elephant* up to 60,0-70,0 lbs		45,780,-		
Elephant* from 70,1-99,9 lbs		58,860,-		
Elephant* over 99,9 lbs		98,100,-		
Impala	Southern	1,640,-	2	3
Cat	Civet	550,-		1
Cat	Genet	550,-		1
Cat	Serval	1,090,-		1
Cat	Wild	550,-		1
Klipspringer		2,730,-		1
Kudu	Greater	4,910		1
Kudu	Lesser	10,360,-		1
Leopard*		11,450,-		1*
Lion*		16,350,-		1*
Hippopotamus		4,910,-		-/-/1
Hyena	Spotted	1,640,-	1	2
Hyena	Striped	2,180,-		1
Jackal	Black Backed	550,-	1	1
Porcupine	Crested	550,-		1
Warthog		1,090,-	1	2
Waterbuck	Defassa	2,180,-	1	2
Zebra	Burchell's	2,180,-	1	2

* Elephant, Leopard and Lion are only available on their respective licences, both are only included together on a 21 day Premium Full Bag.



AREA MASAILAND, ENDUIMET & LAKE NATRON

Our Masailand hunting areas Lake Natron and Enduimet, are situated in the magnificent Rift Valley close to the Kenyan border. Enduimet offers a unique experience to hunt at the base of two of Africa's most iconic mountains, Mt Kilimanjaro and Mount Meru.

The habitat varies tremendously from open plains and arid woodland to acacia brush country and mountain forests. The beautiful scenery, abundance of game and magnificent birdlife make this the perfect location for hunters as well as guests looking for an exclusive photographic experience away from the crowds of the nearby National Parks.

Kilombero North Safaris is the only company in Tanzania that can offer all the Masailand species in one area. This includes, but is not limited to; Robert's Gazelle, Gerenuk, Lesser Kudu, Fringe Eared Oryx, Chandler's Mountain Reedbuck, Eastern and Western White-bearded Wildebeest.

MASAILAND

Price per hunter (USD)

7 day Safari on Regular Plains Game, hunt guidance 1:1	23,900,-
7 day Safari on Regular Plains Game, hunt guidance 2:1	20,900,-
10 day Safari on Premium Plains Game, hunt guidance 1:1	59,900,-
10 day Safari on Premium Plains Game, hunt guidance 2:1	56,900,-
14 day Safari on Leopard & Premium Plains Game, hunt guidance 1:1	67,900,-

wounded and lost animals will be charged (see trophy fees in the brochure)

PLEASE NOTE FOR BOTH AREAS: Prices are subject to change and depend on availability.

Way into Camp Enduimet – International Entry Point: Kilimanjaro

Price on request (USD)

Road Transfer max. 3 pers. per car Kilimanjaro – Camp 2 hours

Air Charter: West Kilimanjaro

Road Transfer max. 3 pers. per car West Kilimanjaro – Camp 40 min.

Commercial Airport: Arusha Airport

Road Transfer max. 3 pers. per car Arusha Airport – Camp 1 hour 45 min.

Way into Camp Lake Natron – International Entry Point: Kilimanjaro

Price on request (USD)

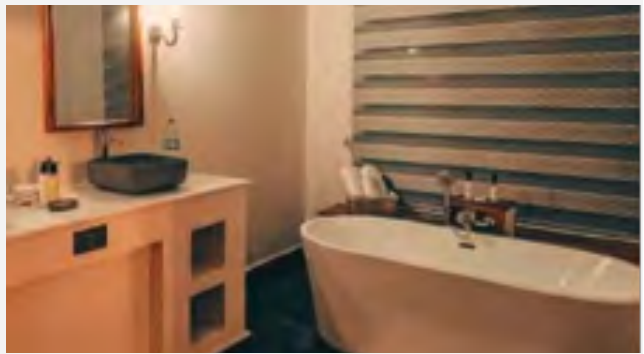
Road Transfer max. 3 pers. per car Kilimanjaro – Camp 4 hours

Air Charter: Merugoi

Road Transfer max. 3 pers. per car Merugoi – Camp 30 min.

Commercial Airport: Arusha Airport

Road Transfer max. 3 pers. per car Arusha Airport – Camp 3 hours 30 min.



CAMP ENDUIMET



CAMP LAKE NATRON

TROPHY FEES: MASAILAND

Species	Sub-Species	Trophy Fee (USD)	Regular Licence 10	Premium Licence 10/14
Baboon	Olive	550,-	1	3
Buffalo	Cape	6,000,-		1**
Bushpig		1,640,-	1	1
Honey Badger	Ratel	550,-		1
Dikdik	Kirk's	1,090,-	1	1
Duiker	Common	1,090,-	1	1
Eland	Patterson's	4,910,-		1
Gazelle	Grant's	2,730,-	1	2/3
Gazelle	Robert's	4,360,-		1**
Gazelle	Thomson's	2,730,-	1	2/3
Gerenuk		10,360,-		1
Hartebeest	Coke's	5,450,-		1**
Hyena	Spotted	1,640,-	1	2
Hyene	Striped	2,180,-		1
Impala	East African	1,640,-	1	2
Cat	Civet	550,-		1
Cat	Genet	550,-		1
Cat	Serval	1,090,-		1
Cat	Wild	550,-		1
Klipspringer		2,730,-		1
Kudu	Lesser	10,360,-		1
Leopard*		11,450,-		1**
Oryx	Fringed Eared	10,360,-		1**
Reedbuck	Chandler's Mountain	3,820,-		1**
Porcupine	Crested	550,-		1
Ostrich		2,730,-	1	1
Jackal	Black Backed	550,-	1	1
Jackal	Side Striped	550,-	1	1
Jackal	Silver Backed	550,-	1	1
Wildebeest	White Bearded	2,180,-	1	3
Zebra	Burchell's	2,180,-	1	3/4

* Leopard is only available on their respective licence

** Cape Buffalo, Coke's Hartebeest, Leopard, Fringe-Eared Oryx, Robert's Gazelle and Chandler's Mountain Reedbuck are only available in Lake Natron



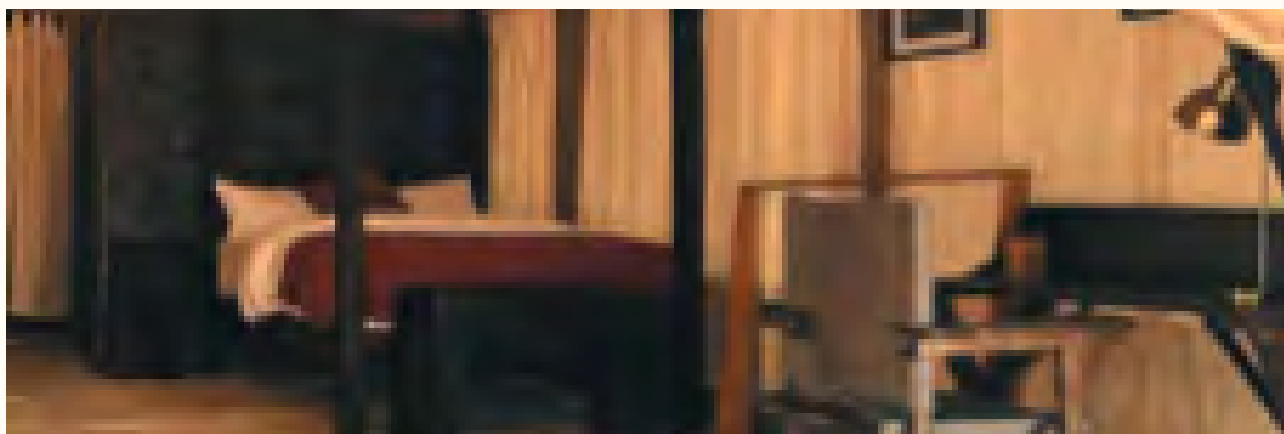
AREA LIWALE

Kiwale, renowned for its rich and diverse landscape, offers a true wilderness experience. The hunting blocks share approximately 35 miles of boundary with the famed Selous Game Reserve, and about 80 miles are bordering the newly established Nyerere National Park. In the north the area is characterised by flat miombo woodland and sand forests with seasonal sand rivers and large permanent ponds.

Towards the southern region of the area, the terrain becomes more rugged dropping down the escarpment towards the Nnjenje River, sharing the boundary with the Nyerere National Park. All this creates an incredibly rich habitat for a variety of wildlife, making a home to a vast selection of game species, including elephant, lion, buffalo, leopard,

zebra, and a number of antelope species including the rare Nyassa Wildebeest and East African Suni.

The remote, and less populated nature of the area makes it ideal for hunters seeking an exclusive and authentic East African experience. Rich in biodiversity, Liwale is a key part of the southern Tanzanian wilderness, offering both challenging hunts and an opportunity to witness pristine landscapes teeming with wildlife. Our three concessions in the area span roughly 2,373 square kilometres with two beautifully designed East African style safari camps, and a comfortable fly camp, all strategically located within the areas to ensure maximum access to as much of the vast game rich region as possible.



LIWALE	Price per hunter (USD)
10 day Safari on Buffalo & Regular Plains Game, hunt guidance 1:1	35,000,-
10 day Safari on Buffalo & Regular Plains Game, hunt guidance 2:1	31,900,-
14 day Safari on Buffalo & Major Plains Game, hunt guidance 1:1	45,500,-
14 day Safari on Leopard & Premium Plains Game, hunt guidance 1:1	69,000,-
16 day Safari on Elephant & Premium Plains Game, hunt guidance 1:1	95,900,-
16 day Safari on Lion & Premium Plains Game, hunt guidance 1:1	89,900,-
21 Tday Safari Premium Full Bag, hunt guidance 1:1	125,000,-

wounded and lost animals will be charged (see trophy fees in the brochure)

Way into Camp Liwale – International Entry Point: Dar es Salaam	Price on request (USD)
Air Charter: Dar es Salaam – Liwale Road Transfer max. 3 pers. per car Liwale – Camp 30 min.	

PLEASE NOTE: Prices are subject to change and

TROPHY FEES: LIWALE

Species	Sub-Species	Trophy Fees (USD)	Regular Licence 10	Major Licence 14	Premium Licence 14/16/21
Baboon	Yellow	550,-	2	3	3
Buffalo	Cape	6,000,-	2	3	3/3/4
2. Buffalo	Cape	6,000,-			
3. + Buffalo	Cape	6,540,-			
Bushbuck	Chobe	1,970,-	1	1	1
Bushpig		1,640,-	1	2	2
Honey Badger	Ratel	550,-		1	1
Duiker	Natal Red	2,180,-	1	1	1
Eland	Livingstone's	4,910,-		1	1
Elephant* under 59,9 lbs		28,780,-			1*
Elephant* up to 60,0-70,0 lbs		45,780,-			
Elephant* from 70,1-99,9 lbs		58,860,-			
Elephant* over 99,9		98,100,-			
Hartebeest	Lichtenstein's	2,180,-	1	1	1/1/2
Hyena	Spotted	1,690,-	1	1	1
Impala	Southern	1,640,-	2	3	4
Cat	Civet	550,-		1	1
Cat	Genet Blotched	550,-		1	1
Cat	Serval	1,090,-			1
Cat	Wild	550,-			1
Crocodile	Nile	4,910,-		1**	1
Kudu	Greater	4,910,-		1	1
Leopard*		11,450,-			1*
Lion*		16,350,-			1*
Hippopotamus		4,910,-		1**	1
Reedbuck	Southern	1,640,-	1	1	1
Sable	Roosevelt's	7,090,-		1	1
Jackal	Silver Backed	550,-		1	1
Suni	Pygmy	2,180,-		1	1
Warthog		1,090,-	2	2	2/2/3
Waterbuck	Common	2,180,-	1	1	1
Wildebeest	Nyasa	2,180,-	1	1	1
Zebra	Burchell's	2,180,-	1	2	2/2/3

* Elephant, Leopard and Lion are only available on their respective licences, both are only included together on a 21 day Premium Full Bag.

** Limited quota, trophy is subject to availability, if this trophy is of specific interest it should be confirmed at the time of the booking

HUNTING- AND ADDITIONAL COSTS FOR ALL AREAS



HUNTING COSTS

	Price (USD)
Meet & Greet at the Airport	In the costs included
Hunt guidance with a professional hunter	In the costs included
Safari-Staff (Trackers, Skinner, etc.)	In the costs included
Hunting vehicle	In the costs included
Accommodation and board in camp	In the costs included
Hunting Licenses, Conservation fee, Concession fees & Government Trophy Handling fees	In the costs included
Trophy pre-preparation in field (skinning and salting) and Transport to Dares Salaam	In the costs included
Beverages incl. (Champagne and alcoholic beverages not incl.)	In the costs included
Organization fee per accompanying person	In the costs included

ADDITIONAL COSTS

	Price (USD)
Flights (we gladly arrange your flights to Tanzania)	On request
Travel Insurance	On request
For Bait - game must be shot by the hunter himself	Price according to list
Transfer Airport to Camp – Air charter or Road transfer	See list
Hotel accommodation before and after the hunt, if desired	On request
Kilombero -fishing -add-on	800,- / day for 2 anglers
Private Chef (excludes supplies)	500,- / day
VIP Airport Service (return)	1.500,- / person
Massage	500,- / day
Inter-company fee	2,000,- / change
Change of Area Fee 21 days only / hunter	5.000,-
Observer / per person and day	350,-
Observer fee / per person and day	550,-
Personal Paramedic / per day (exclusive flights)	600,-
Trophy fees incl. Government Trophy, Community Development & Anti-Poaching	See list
Companion rates - sharing the quota from a licence belonging to a primary hunter:	
10 day Regular Safari	19.000,-
14 day Major Safari	29.000,-
14 day Premium Safari	30.500,-
16 day Premium Safari	34.000,-
21 day Premium Safari	42.500,-
Cameramen-Film crew / per crew and day	450,-
Personal expenses	On request
Suggested tip: For the Professional Hunter / per day	100,-
Suggested tip: The trackers, skimmers, cooks, waiters etc. a total cash only	from 80,- / day
Baiting vehicle / per day	450,-
Additional hunting vehicle and Guide / professional hunter / per day	750,-
Firearm license up to 3 rifles / rifle	250,-
Temporary ammunition tax payable at airport	
Rifle hire per rifle / day	90,-
Ammunition / round. It depends on the caliber, but a minimum	20,-/round
Trophy delivery	On request
Cost of transporting equipment and personnel to places beyond our concessions for specific purposes as requested i.e. photographic safari expeditions	On request
Organization fee per hunter	300,-

RECOMMENDED EQUIPMENT

Recommended Equipment:

Upon arrival comfortable casual clothes

2 long trousers / 1 x shorts

2 long-sleeved shirts with pockets

1 short-sleeved shirt with pockets / 2 T-Shirts

1 windproof, warm jacket for the evening and morning hours

1 sweater or cardigan

Ankle-high shoes lightweight hunting (stalking is also possible with sneakers)

Sneakers and sandals as a substitute for the camp

Pajama / jump suit for the evenings in camp

4 x underwear / socks

1 wide-brimmed hunting hat and 1–2 Caps

1 light backpack in which you can store things needed during the hunt.

Rain gear or poncho

Toiletries (razor/battery powered razor, in the camps electricity is generated with solar energy, which is not sufficient to operate razors), sewing kit

Water bottle

Flashlight (Important! For example Maglite with belt bag and standard 1.5 volt batteries), spare batteries, you should always wear the flashlight on your belt! It gets dark very quickly and without light it can be hard to find you from the fire to your sleeping area!

Hunting knives (a small folding knife is sufficient)

Binoculars (not too big and heavy night glass, a small 8 x 30 is optimal)

Sunglasses / spare glasses

Small photo equipment / video equipment (camera, film, batteries, dust-safe plastic bag, carry bag)

Weapon, variable scope (ideally 1,5-6 magnification), ammunition, cleaning tools and a gun case. Make sure to bring enough ammunition, it is not possible to buy ammunition locally! We recommend roughly 40-60 shots(you also need to have bullets for test shots before the hunt)

RECOMMENDED: clothing should be dark beige or green in color, tear-resistant and if possible made of cotton. In the camps there is a daily laundry service, so there is no need to take extra clothing. In the evenings, place your dirty laundry on the floor or in the designated basket and it will get washed and ironed the next day back to back!

First aid kit/board:

Sunscreen with a high sun protection (two large bottles, and a small bottle for on the go!)

Eye, ear and nose drops

Thermometer (digital)

Scissors and forceps

Plasters

Disinfectants

Wound and healing balm

Insect repellent, insect pin (for example Autan)

Small first aid kit (plasters, antiseptic ointment, painkillers, charcoal tablets, etc.)

YOUR FIRST AID KIT SHOULD CONTAIN

Personal medication

Against fever, diarrhea and vomiting

Stomach trouble

Travel sickness

Sunburn

Insect bites

Circulatory problems

Insomnia

For pain relief (always carry with you!)

Constipation

Against mouth and throat inflammation

Finally, please remember:

Passport, international driver's license if you for example still want to rent a car

European firearms pass

International vaccination card

Knives, weapons parts and ammunition (not in your hand luggage!)

Rifle in rugged gun case

Ammunition

Travelers checks

Binoculars

Drugs, especially Autan

Camera with new batteries and film

Air ticket (check departure times again), confirm return flight immediately after arrival



Blaser Safaris GmbH

Europastraße 1/1, A-7540 Güssing | Österreich/Austria

AT +43 (0) 33 22 – 4296320

www.blaser-safaris.com | info@blaser-safaris.com

Photo: Free Vector Maps, Adobe Stock, Pixabay