

# ZAMBIA 2025



STALKING

**Blaser**  
safaris





Nyaminga GMA is situated in the world renowned Luangwa Valley, it lies across from the North Luangwa National Park on the Luangwa River which teems with hippo & enormous crocodile.

## CONTENT

Hunting in Zambia.....	4
Accommodation.....	5
Hunting costs.....	6
Additional costs.....	7
Species and trophy fees.....	8
Recommended equipment.....	12

## HUNTING IN ZAMBIA

### LUANGWA VALLEY – NYAMINGA

The area encompasses 200 square kilometres of Miombo woodland, savannah and rugged mountains. This varied habitat caters for the select variety of species found in Nyaminga GMA.

The hunting quota consists of Leopard, Buffalo, Chobe Bushbuck, Crocodile, Elephant, Grysbok, Hippo, Kudu, Oribi, Puku, Cookson's Wildebeest & a variety of other plains game.



# ACCOMMODATION



## CAMP LUANGWA-RIVER

You will be accommodated in en-suite luxury safari tents on the banks of the Luangwa River. Served international cuisine and game meat provided by yourself, our well-trained friendly staff will cater to your every need where possible.

The nights are filled with the sounds of lions, leopards and hyenas, with the occasional elephant taking a stroll through camp.

# HUNTING COSTS

## 7 DAYS 1:1 BUFFALO & PLAINS GAME SAFARI

### POSSIBLE ITINERARY:

<b>DAY 01</b>	Departure from Europe
<b>DAY 02</b>	Arrival in Lusaka and Air Charter Camp
<b>DAY 03 – 09</b>	E. g. 7 days hunting
<b>DAY 10</b>	Air Charter to Lusaka and return flight
<b>DAY 11</b>	Arrival in Europe

	Price per hunter 1:1 (USD)	Price per hunter 2:1 (USD)
7 x days hunting	14,500,-	13,800,-
1 x Hunting license, safari, bird and gun permits	1,000,-	1,000,-
1 x Dip, pack, crate and documents of trophies	2,000,-	2,000,-
1 x Buffalo trophy fee	4,400,-	4,400,-
<b>SAFARI COSTS 1:1</b>	<b>21,900,-</b>	<b>21,200,-</b>

- Plains game can be added for the trophy fee.
- The trophy fee for buffalo is only payable if the buffalo is shot or wounded. All other fees / expenses / taxes are payable prior to commencement of the safari and are non refundable.

## TYPE OF SAFARI

Hunt guidance	Price per hunter 1:1 (USD)
21 Day safari – lion & leopard	100,000,-
21 Day safari – lion	80,000,-
14 Day safari – leopard	38,000,-
10 Day safari – elephant	30,000,-
elephant tuskless	8,000,-
10 Day buffalo safari	17,995,-
Kafue Lechwe (1 day trip) – Kafue Lechwe incl.	5,500,-

Hunting costs	Price (USD)
A representative will meet you at Kenneth Kaunda International (Lusaka) airport and assist you through customs for arrival and departure.	Costs included in daily rates
Accommodation, daily laundry, full catering and soft drinks during the safari	Costs included in daily rates
Licensed professional hunter's services, skinner and trackers, hunting vehicle	Costs included in daily rates
Field preparation of trophies	Costs included in daily rates

## ADDITIONAL COSTS

<b>Additional costs for all huntings and packages</b>	<b>Price (USD)</b>
Flights (we can organize your flights to Lusaka)	On request
Travel insurance	On request
Safari license/firearm/permit/meet & greet	1,000,-
Air charter from/to lusaka to camp approx.	On request
Airport departure tax	25,-
Daily Rate observer per day	350,-
all 2:1 Safaris less	100,- per day per hunter
Except on situngu hunts per day	400,-
Hotel accommodation before, during and after the safari period	On request
Visa on arrival	Approx. 150,-
Baiting vehicle	100,-/day
Additional PH	300,-/day
Import tax on ammunition (payable on arrival at the airport)	2,-/round
Government concession fees: cats & elephant Safari	600,-/day/hunter
Government concession fees: others	400,-/day/hunter
All wounded animals will be charged for at the full trophy/license fee	According to list
Trophy fees - all second animals are 150 % of the listed prices	According to list
Trophy dip & pack per hunter on buffalo plains game hunts	2,000,-/hunter
Trophy dip & pack per hunter on cats / elephant hunts	2,500,-/hunter
Trophy preparation and shipment	On request
Gun hire per gun	50,-/day
Ammunition	10,-/round
Alcoholic beverages, spirituous, liquor	On request
Personal items	On request
Gratuities guideline staff	Approx. 100,-/day/hunter
Gratuities guideline observer PH	Approx. 100,-/day/hunter
Organization fee per hunter	100,-

- All prices are subject to change, should the Government alter any rates towards the safari company.
- Charter flights prices are subject to change due to fluctuating fuel prices.
- Balance of daily rate, trophy, charter flights or road transport and animal licenses are due 60 days prior to the contracted date.
- Cancellation: All deposits, less 10 % administration fee, will be refunded if safari is cancelled more than 6 months prior to commencement. Safaris cancelled less than 6 months prior to commencement, deposit will only be refunded if the safari can be rebooked in the same time slot.

# SPECIES AND TROPHY FEES

ALL SECOND ANIMALS ARE 150% OF PRICES LISTED BELOW

## BABOON YELLOW



**Price (USD)**

250,-

## BUFFALO



**Price (USD)**

4,400,-

## BUSHBUCK CHOBE



**Price (USD)**

1,250,-

## BUSHPIG



**Price (USD)**

900,-

## CROCODILE



**Price (USD)**

3,500,-

## DUIKER, COMMON



**Price (USD)**

750,-



## ELAND LIVINGSTONES



**Price (USD)**

4,900,-

## ELEPHANT



**Price (USD)**

elephant

16,500,-

elephant tuskless

7,500,-

## GRYSBOK SHARP'S



**Price (USD)**

1,100,-

## HARTEBEEST LICHTENSTEIN



**Price (USD)**

2,000,-

## HYENA



**Price (USD)**

1,700,-

## HIPPOPOTAMUS



**Price (USD)**

3,500,-

## IMPALA SOUTHERN



**Price (USD)**

500,-

## KUDU SOUTHERN GREATER



**Price (USD)**

3,300,-

## LECHWE



**Price (USD)**

Lechwe Black

5,500,-

## LEOPARD



**Price (USD)**

11,000,-

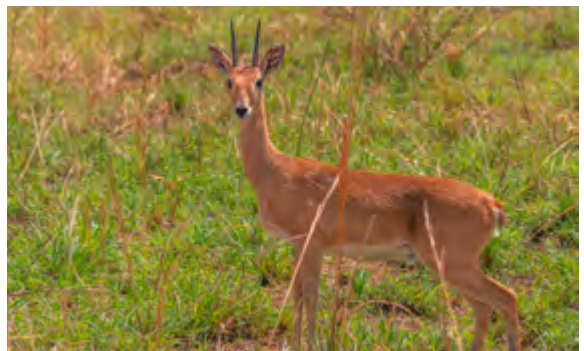
## LION



**Price (USD)**

27,500,-

## ORIBI



**Price (USD)**

1,300,-

### PUKU



**Price (USD)**

1,300,-

### ROAN



**Price (USD)**

7,700,-

### SITATUNGA



**Price (USD)**

8,800,-

### WARTHOG



**Price (USD)**

900,-

### WATERBUCK COMMON



**Price (USD)**

2,200,-

### WILDEBEEST COOKSON'S



**Price (USD)**

4,800,-

### ZEBRA BURCHELLS



**Price (USD)**

1,950,-

# RECOMMENDED EQUIPMENT

The following list would generally be sufficient for a 10 day safari –  
**Attention: Camouflage is forbidden in Zambia!**

---

3–4 long sleeved shirts.

---

2 Pairs of trousers. Note: trousers with zip off legs work very well.

---

2 Pairs of shorts

---

3 T-Shirts or Shirts

---

3–4 Pairs of good quality cotton socks.

---

1 Jacket

---

1 Thick fleece for the early mornings and evening.

---

1 Pair of comfortable soft soled walking shoes.

---

Lightweight gloves

---

Wide brimmed hat or baseball cap

---

Basically, beige or green colored, tear-resistant clothing, preferably cotton, are recommended.

Most hunters are TRAVELING WITH CLOTHES THAT ARE TOO LIGHT IN COLOR FOR BUSHCLOTHES! Choose darker green or brown tones! In the camps, there is a laundry service, so not too much clothing needs to be taken.

---

## Travel Documents:

---

Passport

---

Driving license

---

EFP (European firearms pass).

---

Credit card

---

Traveler's checks

---

Airline ticket

---

If you are planning a hotel stay before or after the hunt, a jacket and tie should also be packed in your luggage!

---

## Equipment

---

Backpack

---

Water bottle

---

Flashlight, spare batteries

---

Hunting knife

---

Binoculars

---

Sunglasses

---

Spare glasses

---

Small Photographic equipment (camera, film, batteries – dust-proof plastic bag)

---

Adapter

---

GPS or Compass, if you want to use

---

Weapon, variable riflescope (ideally 1,5-6fach), ammunition, cleaning utensils, rifle case  
(Do not scrimp on ammunition, on site is the ammunition purchase is not possible!)

---

### Medication / Toiletries:

Toiletries such as toothbrush, toothpaste, comb/ hair brushes, nail brush

Moistering Cream, Lip balm

Razor & blades, shaving gel

Small vanity mirror

Small wash cloth – towels are supplied though in our camp

Toilet paper and/or Kleenex, wet wipes/hand sanitizer or no-water/antibacterial soap – very handy in the safari vehicle

Sun cream

### Personal medication

First aid kit (Plasters, antiseptic ointment, painkillers, charcoal tablets etc)

Sunscreens

Eye, Ear and Nose drops

Thermometer (digital)

Scissors and forceps

Field dressings and plasters

Disinfectants

Wound and healing balm

Insect repellent

The usual long-term medication

### And the following medicines

Against fever, diarrhea and vomiting

Stomach discomfort

Sickness

Sunburn

Insect bites

Circulatory problems

Insomnia

For pain relief (always carry them with you! its no use if you have an accident in the field and they're in the camp!)

Constipation

Against sore throat

### Others

Pens and an A4 folder for travel formalities

Locks for your luggage

Two separate wallets

Mobil phone and charger

Mini sewing kit

Lighter / waterproof matches



**Blaser Safaris GmbH**

Europastraße 1/1, A-7540 Güssing | Österreich/Austria

AT +43 (0) 33 22 – 4296320

[www.blaser-safaris.com](http://www.blaser-safaris.com) | [info@blaser-safaris.com](mailto:info@blaser-safaris.com)

Foto: Free Vector Maps, Adobe Stock/Fotolia, Pixabay, iStock

The General Terms and Conditions of Blaser Safaris GmbH apply. Blaser Safaris GmbH acts as an intermediary and is not the organizer of hunting tours. Subject to errors and alterations of prices and programs. Version 12/2024