

ZIMBABWE MATETSI AREA 2024



STALKING

Blaser
safaris





In Zimbabwe we conduct our hunting with our Partner, Classic African Hunting, in the remote Matetsi area in the west of the country.

CONTENT

General travel information.....	5
Hunting in Zimbabwe.....	6
Safari itinerary.....	7
HUNTING AREA KAZUMA FOREST	8
Accommodation.....	9
Hunting costs.....	10
Additional costs.....	10
Game species and shooting fees.....	11
HUNTING AREA MATETSI UNIT 2	14
Accommodation.....	15
Hunting costs.....	16
Additional costs.....	17
Game species and shooting fees	18
Recommended equipment	22



GENERAL TRAVEL INFORMATION



CURRENCY

Various hard currencies such as USD, ZAR, Botswana pula, Euro



TIME DIFFERENCE

CET +1 h



ELECTRICITY

220 Volt/50 hertz alternating current, three-pin plug sockets (adapter required)



CLIMATE

The average daytime temperatures are 20–25 °C (68–77 °F) and can reach 30 °C (86 °F) from September to November. The evenings are always cool to cold. The rainy season runs from late November until March. Periods of continuous rain are rare.

In the areas of the country at higher altitudes, including the main cities of Harare and Bulawayo, temperatures are rather mild.

Between May and August, the weather is cool and dry, with distinctly cold evenings and nights in June and July. The hottest temperatures are recorded in September and October.

In the lower-lying regions in the North and South of the country, however, temperatures are significantly higher.



ENTRY REQUIREMENTS

Please note the entry rules for each country. You can obtain this information from the relevant consulate. If you need a visa, please note that you are responsible for obtaining the visa yourself.



HEALTH

Due to the hygiene situation and the insufficient supply of medication, the situation in the private hospitals does not meet European standards. We recommend taking along all personal medication for the entire duration of your stay.

The water in the rivers and reservoirs is not suitable for swimming because it is infected with schistosomes (bilharzia). We highly recommend taking along a travel medical kit.

Vaccinations

There are no mandatory vaccinations for travel here, except when entering via a country where yellow fever is prevalent. The Center for Travel Health, however, recommends vaccinations against cholera, hepatitis B and rabies in addition to the basic vaccination program for all travelers (diphtheria/tetanus/polio, hepatitis A and typhoid). Zimbabwe is a malaria country. Please contact a qualified doctor to discuss malaria prophylaxis. Drugs such as Malarone and Lariam have been shown to work well.



INSURANCE

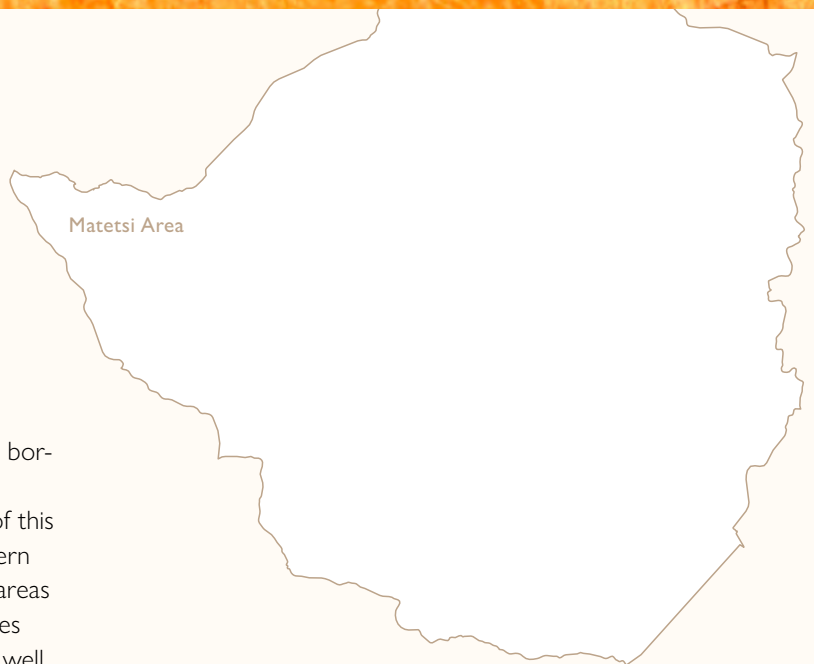
Taking out travel insurance in case you fall ill or require ambulance services is strongly advised.



HUNTING IN ZIMBABWE

This includes Kazuma / Pandamasuie Forest area which borders Kazuma Pan and Zambezi National Park. We also hunt the nearby Fuller Forest. Further south of this we hunt Ngamo Forest area that shares the northeastern boundary with the famous Hwange National Park. All areas are wild, unfenced and vary in size from 30,000 hectares to just over 102,000 hectares. These areas are all very well known for delivering consistently good quality trophies of both big and plains game animals.

There is no defined hunting season in Zimbabwe however, due to the summer rains; most hunting is conducted between the months of April and October, with June, July and August being the most popular months for hunting.



SAFARI ITINERARY

POSSIBLE ITINERARY

DAY 01	Departure from Europe
DAY 02	Arrive in Victoria Falls, transfer to camp
DAY 03–12	For example 10 hunting days
DAY 13	Transfer to airport, return flight
DAY 14	Arrival in Europe

DAY OF HUNTING IN ZIMBABWE

5.00 am (or first light - Breakfast).

The wake time depends how far from the camp one will be hunting that day, if some species of animals are a long way from camp one would arise much earlier in order to get to the hunting area early.

05.30 am – Transport to the hunting area in Land Cruisers especially equipped for safari hunting purposes

Once you arrive at the hunting area you will travel on foot.

07.00 am till noon – Early morning is the best time for hunting

A lunch break will be scheduled depending on the type of hunt (big game or plains game).

On big game hunts, it is quite possible that you will spend the lunch break in the hunting area if you are following a trail, to avoid losing time and losing the trail.

Noon / Hunting on Plains Game

Usually by lunchtime it is pretty hot making hunting during these hours not very successful. You head back to the camp for lunch and maybe a little siesta. If any animals are shot during the course of the day they are normally transported back to the camp where qualified skinners are available to skin the animals and prepare the trophies according to the hunters requirements.

After lunch

After a siesta, we will head out to hunt once it becomes a little cooler and game starts to move about.

End of day

After hunting all afternoon around dusk time, we return to camp. You will then have time to shower / bath.

19.00 pm

You relax around the campfire with your professional hunter with a sundowner. Dinner follows as a three-course meal, thereafter plans are made for the next day's hunt and then to bed.

22.00 pm

Everyone heads to bed to rest for the next great day of hunting.

HUNTING AREA KAZUMA FOREST

To reach the Kazuma Camp you fly through Johannesburg onto Victoria Falls with either South African Airways or British Airways. In Victoria Falls you will be picked up at the airport and transported to the camp. The drive to camp is approximately 1 hour.



ACCOMMODATION



KAZUMA CAMP

The camp is constructed of 4 „A“ frame thatched chalets under a grove of false Mopane Trees. All chalets have running water and flush toilets, there is a communal dinning area and fire pit. Lighting is all solar powered.

HUNTING COSTS

Kazuma Forest – Hunting guidance 1:1	Hunting days	Price per day (USD)
Plains Game	7	850,–
Sable & Plains Game	10	1,200,–
Buffalo & Plains Game	10	1,400,–
Buffalo, Sable & Plains Game	14	1,500,–
Leopard & Plains Game	15	1,400,–
Buffalo, Leopard & Plains Game	15	1,500,–
Elephant & Plains Game (No Sable)	15	2,600,–
Buffalo, Sable, Leopard & Plains Game	18	1,650,–
Elephant tuskless & Plains Game	10	1,050,–
Elephant & Buffalo	18	2,600,–
Lion, Buffalo & Plains Game	21	2,700,-
Lion, Elephant & Plains Game	24	2,600,-
Meet & Greet at the airport		Included in the costs
Transfer from the airport to camp		Included in the costs
Service of a licensed professional hunter		Included in the costs
Hunt guidance 1:1		Included in the costs
Safari-staff (trackers, skinner, etc.)		Included in the costs
Accommodation and board, food and soft drinks in camp		Included in the costs
Daily laundry services		Included in the costs

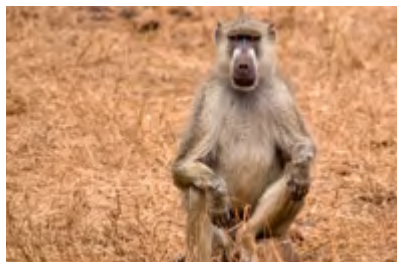
All prices subject to change; Lion hunts are available on request hunt guidance 1:1 and are quoted separately.

ADDITIONAL COSTS

	Price (USD)
Flights (we are happy to arrange your flights to Zimbabwe)	On request
Travel insurance	On request
When carrying your own weapon we organize a support service in Johannesburg	350,–
When hunting elephant, lion and leopard, one must be accompanied by a national park scout. If the booked game (elephant, lion or leopard) is shot on the 5th day, only 5 days are charged for the scout.	100,-/Tag
Hotel before / after the hunt if needed	On request
VAT on accommodation per person per day	16,50
Observer fee per day / Matetsi Area	300,–
Observer fee per day / Kazuma Area	300,-
Trophy fees	See list
CITES tags	100,–
Rifle rental, if desired per day	30,–
Ammunition per box used	On request
Transport of trophies to taxidermist or shipper	On request
Preparation of trophy by a taxidermist	On request
Shipping of trophy to international destination	On request
Government Levy on daily rate	2 %
Government Levy on trophy fees	4 %
All alcoholic beverages & spirits	On request
Suggested tip for the camp manager a total	100,–
Suggested tip for camp manager in total	200,–
Suggested tip for trackers, skimmers, cooks, waiters etc. a total	400,–
Organization fee hunter	300,–
Organization fee observer	150,–

GAME SPECIES AND SHOOTING FEES

BABOON



Price (USD)

110,–

BUFFALO

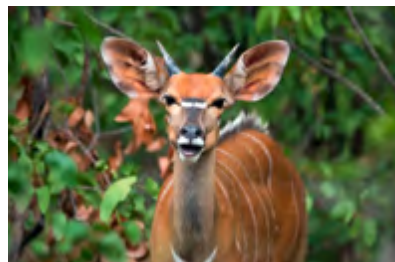


Price (USD)

Male/cow

7,000,–/1,900,–

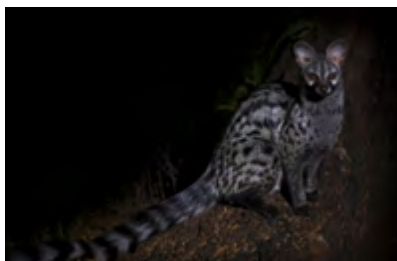
BUSHBUCK



Price (USD)

935,–

CIVET



Price (USD)

330,–

ELAND



Price (USD)

Male/cow

2,200,–/990,–

ELEPHANT



Price (USD)

Trophy/Tuskless

18,900,–/5,500,–

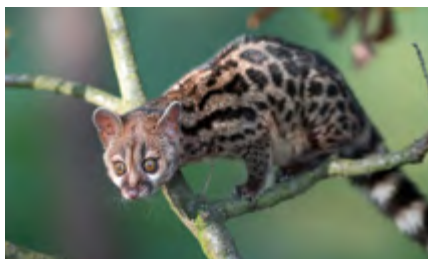
GIRAFFE



Price (USD)

3,300,–

GENET



Price (USD)

330,–

DUIKER GREY



Price (USD)

275,–

HYENA



Price (USD)

600,–

IMPALA



Price (USD)

Male/female

280,–/220,–

KUDU



Price (USD)

Male/cow

1,320,–/825,–

LEOPARD



Price (USD)

8,300,-

LION



Price (USD)

39,000,-

GUINEA FOWL



Price (USD)

6,-

PORCUPINE



Price (USD)

220,-

JACKAL



Price (USD)

275,-

REED-BUCK



Price (USD)

990,-

SABLE



Price (USD)

6,600,-

SERVAL



Price (USD)

440,-

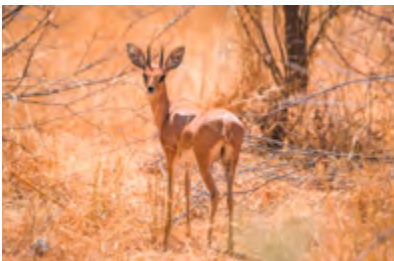
MONKEY



Price (USD)

110,-

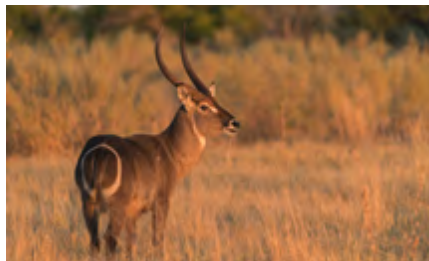
STEENBOK



Price (USD)

330,-

WATERBUCK MALE



Price (USD)

1,950,-

WARTHOG



Price (USD)

Male/female

385,-/275,-

WILDCAT



Price (USD)
330,–

ZEBRA



Price (USD)
1,500,–

Wounded animals are considered shot and thus will be charged for. Not all species are available in the same concession and a transfer may be required

HUNTING AREA MATETSI UNIT 2

To reach the Matetsi Camp you fly through Johannesburg onto Victoria Falls with either South African Airways or British Airways. In Victoria Falls you will be picked up at the airport and transported to the camp. The drive to camp is approximately 1 hour.

● Victoria Falls

● Matetsi Unit 2



ACCOMMODATION



CAMP MATETSI UNIT 2

HUNTING COSTS

Hunt guidance 1:1	Hunting days	Price pro Tag (USD)
Plains Game	7	850,—
Buffalo & Plains Game	10	1,250,—
Tuskless Elephant & Plains Game	10	1,050,—
Sable & Plains Game	12	1,200,—
Leopard & Plains Game	14	1,400,—
Leopard, Sable & Plains Game	14	1,500,—
Elephant & Plains Game	14	2,100,—
Buffalo, Sable & Plains Game	16	1,400,—
Buffalo, Leopard & Plains Game	16	1,650,—
Tuskless Elephant, Buffalo & Plains Game	16	1,350,—
Tuskless Elephant, Leopard & Plains Game	16	1,500,—
Elephant, Buffalo & Plains Game	16	2,200,—
Buffalo, Leopard, Sable & Plains Game	18	1,700,—
Elephant, Leopard & Plains Game	18	2,200,—
Elephant, Buffalo, Leopard & Plains Game	18	2,250,—
Lion, Elephant, Sable & Plains Game	21	2,700,—
Lion, Sable & Plains Game	21	2,700,—
Lion, Elephant & Plains Game	21	2,700,—
Lion, Leopard & Plains Game	21	2,700,—
Lion, Buffalo & Plains Game	21	2,700,—
Lion, Leopard, Buffalo & Plains Game	24	2,700,—
Lion, Elephant, Buffalo & Plains Game	24	2,850,—
Lion, Elephant, Leopard & Plains Game	24	2,850,—
Lion, Elephant, Buffalo, Leopard & Plains Game	24	3,000,—
Meet & Greet at the airport		Included in the costs
Transfer from the airport to camp		Included in the costs
Service of a licensed professional hunter		Included in the costs
Hunt guidance 1:1		Included in the costs
Safari-staff (trackers, skinner, etc.)		Included in the costs
Accommodation and board, food and soft drinks in camp		Included in the costs
Daily laundry services		Included in the costs

All prices subject to change.

ADDITIONAL COSTS

	Price (USD)
Flights (we are happy to arrange your flights to Zimbabwe)	On request
Travel insurance	On request
When carrying your own weapon we organize a support service in Johannesburg	350,–
When hunting elephant, lion and leopard, one must be accompanied by a national park scout. If the booked game (elephant, lion or leopard) is shot on the 5th day, only 5 days are charged for the scout.	100,–/Tag
Hotel before / after the hunt if needed	On request
VAT on accommodation per person per day	16,50,–
Observer fee per day / Matetsi Area	300,–
Observer fee per day / Kazuma Area	300,–
Trophy fees	See list
CITES tags	100,–
Rifle rental, if desired per day	30,–
Ammunition per box used	On request
Transport of trophies to taxidermist or shipper	On request
Preparation of trophy by a taxidermist	On request
Shipping of trophy to international destination	On request
Government Levy on daily rate	2 %
Government Levy on trophy fees	4 %
All alcoholic beverages & spirits	On request
Suggested tip for the camp manager a total	100,–
Suggested tip for camp manager in total	200,–
Suggested tip for trackers, skinners, cooks, waiters etc. a total	400,–
Organization fee hunter	300,–
Organization fee observer	150,–

GAME SPECIES AND SHOOTING FEES

BABOON



Price (USD)

165,—

BUFFALO MALE



Price (USD)

7,000,—

CIVET



Price (USD)

330,—

CROCODILE



Price (USD)

4,000,—

DUIKER



Price (USD)

275,—

SABLE



Price (USD)

6,600,—

ELAND MALE



Price (USD)

3,300,—

ELEPHANT



Price (USD)

Trophy/Tuskless

17,100,—/5,500,—

GIRAFFE



Price (USD)

3,300,—

GENET



Price (USD)

330,—

GRYSBOK



Price (USD)

550,—

HIPPO*



Price (USD)

On request

HYENA



Price (USD)

660,—

IMPALA MALE



Price (USD)

275,—

JACKAL (Black Backed)



Price (USD)

385,—

WILDCAT (AFRICAN)



Price (USD)

330,—

KUDU MALE



Price (USD)

1,955,—

LEOPARD



Price (USD)

8,300,—

LION



Price (USD)

38,500,—

MONKEY



Price (USD)

110,—

PORCUPINE



Price (USD)

220,—

REED-BUCK



Price (USD)

990,—

ROAN*



Price (USD)

7,700,—

ZEBRA



Price (USD)

1,550,—

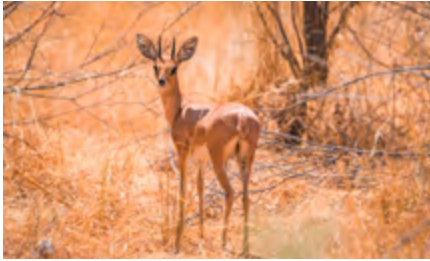
*Hippo, crocodile and roan are available on request.

SERVAL



Price (USD)
440,—

STEENBOK



Price (USD)
600,—

WATERBUCK



Price (USD)
2,500,—

WARTHOG



	Price (USD)
Male	500,—

Wounded animals are considered shot and thus will be charged for.
Other packages & special combinations are available on request, incl. Hunt guidance 2:1.



RECOMMENDED EQUIPMENT

The following list would generally be sufficient for a 10 day safari:

3–4 long sleeved shirts

2 Pairs of trousers (with zip off legs work very well)

2 Pairs of shorts

3 T-shirts or shirts

3-4 Pairs of good quality cotton socks.

1 Jacket

1 Thick fleece for the early mornings and evening.

1 Pair of comfortable soft soled walking shoes.

Lightweight gloves

Wide brimmed hat or baseball cap

Basically, beige or green colored, tear-resistant clothing, preferably cotton, are recommended.

Most hunters are traveling with hunting clothes that are too light! Choose darker green or brown tones! In the camps, there is a laundry service, so not too much clothing needs to be taken.

ATTENTION: Camouflage is forbidden in Zimbabwe!

Papers

Passport

Drivers license

EFP (European Firearms Pass)

Credit cards

Traveler's checks

Flight ticket

If you are planning a hotel stay before or after the hunt, a jacket and tie must belong to your luggage!

Hunting equipment

Backpack

Water bottle

Flashlight, spare batteries

Hunting knife

Binoculars

Sunglasses

Spare glasses

Small photographic equipment (camera, film, batteries – dust-proof plastic bag)

Adapter

GPS or Compass, if you want to use

Weapon, variable riflescope (ideally 1,5–6×), ammunition, cleaning utensils, rifle case (do not scrimp on ammunition, on site purchase of ammunition is not possible!)

Body care

Toiletries such as toothbrush, toothpaste, comb/ hair brushes, nail brush
Moistering cream, lip balm
Razor & blades, shaving gel
Small vanity mirror
Small wash cloth – towels are supplied though in our camp
Toilet paper and/or Kleenex, wet wipes/hand sanitizer or no-water/antibacterial soap – very handy in the safari vehicle

First-Aid-Kit

Personal medication
Sun cream
Eye, Ear and Nose drops
Thermometer (digital)
Scissors and forceps
Field dressings and plasters
Disinfectants
Wound and healing balm
Insect repellent

Medicines

Against fever, diarrhea and vomiting
Stomach discomfort
Sickness
Sunburn
Insect bites
Circulatory problems
Insomnia
For pain relief (always carry these with you! If you leave it in the camp its no use to you in an accident in the field!)
Against constipation
Against sore throat

Others

Pens and an A4 folder for travel formalities
Locks for your luggage
Two separate wallets
Mobil phone and charger
Mini sewing kit
Lighter/matches waterproof



Blaser Safaris GmbH

Europastraße 1/1, A-7540 Güssing | Österreich/Austria
AT +43 (0) 33 22 – 4296320 | DE +49 (0) 7562 – 9145414
www.blaser-safaris.com | info@blaser-safaris.com

Photo: Free Vector Maps, Adobe Stock/Fotolia, iStock, Pixabay, Pexels